



产品样本
PRODUCT SAMPLES

SKY CRANE GLOBAL SERVICE

总部地址:中国·河南省长垣市魏庄工业区

Address: Weizhuang Industrial Zone, Changyuan City, China

公司网址:www.skycranezh.com

whatsapp:+8617656197999(WhatsApp/wechat)

email:skycrane@gmail.com

电动葫芦、单梁桥式、防爆梁式起重机类

**ELECTRIC HOIST
SINGLE GIRDER OVERHEAD CRANE
EXPLOSION-PROOF OVERHEAD CRANE**

产品分类
PRODUCT CLASSIFICATION

轻小型起重设备
SMALL LIGHT LIFTING EQUIPMENT

低净空钢丝绳电动葫芦
LOW HEADROOM STEEL WIRE ROPE ELECTRIC HOIST

企业资质

ENTERPRISE QUALIFICATIONS

完善的质量保证体系,严格的质量控制,全面的质量管理,让每一个环节精益求精,每一个产品都日臻完美。国际先进的检测设备,国内权威的检测中心,稳步提升的质量检测水平,使我们在激烈的国际商战中,充满信心。

Complete quality assurance system, strict quality control and all-round quality management make each link and each product much more perfect. International top-rank testing equipment, domestic authoritative testing center and steadily-improved quality testing level make us have full assurance during violent international trade war.



设计制造标准 及检验、验收标准

DESIGN AND MANUFACTURING STANDARDS,
INSPECTION AND ACCEPTANCE STANDARDS.

钢丝绳电动葫芦 设计制造标准

Design and Manufacture Standards of Wire Rope Electric Hoist

- 1 • GB/T 3811-2008 起重机设计规范
- 2 • GB 6067.1 - 2010 起重机械安全规程 第1部分:总则
- 3 • JB/T 9008.1 ~ 9008.2 - 2004 钢丝绳电动葫芦
- 4 • JB/T 10222 - 2011 防爆钢丝绳电动葫芦

钢丝绳电动葫芦 检验、验收标准

Inspection and Acceptance Standards of Wire Rope Electric Hoist

- 1 • JB/T 9008.1 ~ 9008.2 - 2004 钢丝绳电动葫芦
- 2 • JB/T 10222 - 2011 防爆钢丝绳电动葫芦

电动单梁悬挂起重机 设计制造标准

Design and Manufacture Standards of Electric Single Girder Suspension Crane

- 1 • GB/T 3811 - 2008 起重机设计规范
- 2 • GB 6067.1 - 2010 起重机械安全规程 第1部分:总则
- 3 • JB/T 2603 - 2008 电动悬挂起重机

电动单梁悬挂起重机 检验、验收标准

Inspection and Acceptance Standards of Electric Single Girder Suspension Crane

- 1 • JB/T 2603 - 2008 电动悬挂起重机
- 2 • GB 6067.1 - 2010 起重机械安全规程 第1部分:总则
- 3 • GB/T 5905 - 2011 起重机试验规范和程序
- 4 • GB/T 5972 - 2009 起重机钢丝绳保养、维护、安装、检验和报废
- 5 • GB/T 10051.1 ~ 15 - 2010 起重吊钩

LD电动单梁起重机 设计制造标准

Design and Manufacture Standards of LD type Electric Single Girder Crane

- 1 • GB/T 3811-2008 起重机设计规范
- 2 • GB 6067.1 - 2010 起重机械安全规程 第1部分:总则
- 3 • JB/T 1306 - 2008 电动单梁起重机
- 4 • JB/T 10219 - 2011 防爆梁式起重机

LD电动单梁起重机 检验、验收标准

Inspection and Acceptance Standards of LD type Electric Single Girder Crane

- 1 • JB/T 1306 - 2008 电动单梁起重机
- 2 • GB/T 5905 - 2011 起重机试验规范和程序
- 3 • GB 6067.1 - 2010 起重机械安全规程 第1部分:总则
- 4 • GB/T 5972 - 2009 起重机钢丝绳保养、维护、安装、检验和报废
- 5 • GB/T 10051.1~15 - 2010 起重吊钩
- 6 • JB/T 10219 - 2011 防爆梁式起重机

电动葫芦门式起重机 设计制造标准

Design and Manufacture Standards of Gantry Crane with Electric Hoist

- 1 • GB/T 3811 - 2008 起重机设计规范
- 2 • GB 6067.1 - 2010 起重机械安全规程 第1部分:总则
- 3 • JB/T 5663 - 2008 电动葫芦门式起重机
- 4 • GB/T 10051.1~15- 2010 起重机吊钩

门式起重机 检验、验收标准

Inspection and Acceptance Standards of Gantry Crane

- 1 • JB/T 5663-2008 电动葫芦门式起重机
- 2 • GB/T 5905 - 2011 起重机试验规范和程序
- 3 • GB/T 10051.1~15-2010 起重吊钩

LH型电动葫芦桥式起重机 设计制造标准

Design and Manufacture Standards of LH type Overhead Crane with Electric Hoist

- 1 • GB/T 3811 - 2008 起重机设计规范
- 2 • JB/T 3695 - 2008 电动葫芦桥式起重机
- 3 • GB 6067.1 - 2010 起重机械安全规程 第一部分:总则

LH型电动葫芦桥式起重机 检验、验收标准

Inspection and Acceptance Standards of LH type Overhead Crane with Electric Hoist

- 1 • GB 6067.1 - 2010 起重机械安全规程 第1部分:总则
- 2 • GB/T 5905 - 2010 起重机试验规范和程序
- 3 • GB/T 10183.1 - 2010 起重机、车轮及大车和小车轨道公差 第一部分:总则
- 4 • JB/T 9008.1 ~ 9008.2 - 2004 钢丝绳电动葫芦
- 5 • JB/T 3695 - 2008 电动葫芦桥式起重机

CONTENTS

目录

电动葫芦、单梁桥式、防爆梁式起重机类

Electric hoist Single girder overhead crane
Explosion-proof overhead crane

本样本所供参数仅供选型参考, 如有更改恕不通知, 具体型号参数以本公司实际产品设计为准, 欢迎咨询。

The parameters provided in this sample are only for model selection reference, and are subject to change without notice.
The specific model parameters are subject to the actual product design of our company.
Welcome to consult.

电动葫芦 Electric Hoist

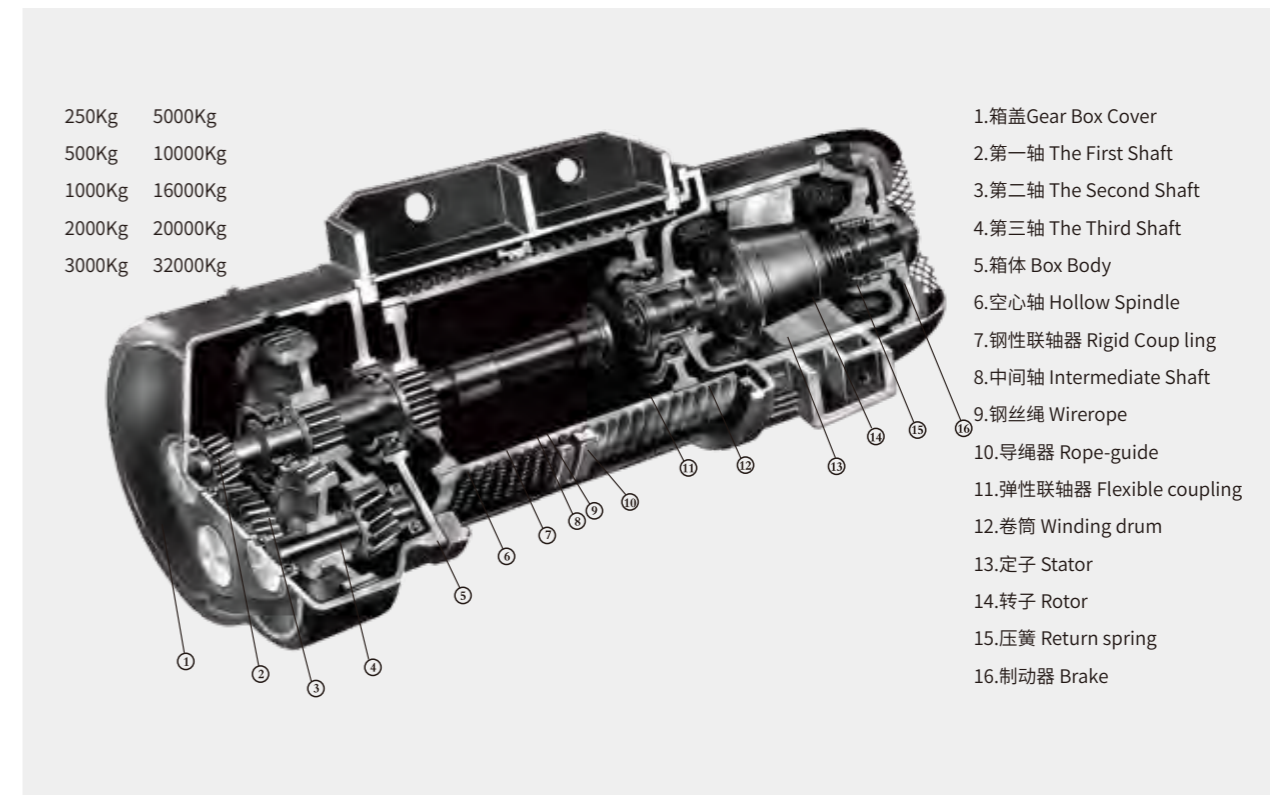
CD、MD.电动葫芦 CD、MD. Electric Hoist	P.02
WH电动葫芦 WH Electric Hoist	P.05
YH冶金电动葫芦 YH Electric Hoist for Metallurgy	P.07
HB型防爆钢丝绳电动葫芦 HB Model Explosion Proof Wire Rope Electric Hoist	P.09

单梁桥式起重机 Electric Single Girder Crane

LDY型冶金电动单梁起重机 LDY Model Electric Single Girder Crane	P.14
LD型电动单梁起重机 LD Model Electric Single Girder Crane	P.20
LDP型电动单梁起重机 LDP Model Electric Single Girder Crane	P.29
HD型电动单梁起重机 HD Model Electric Single Girder Crane	P.33
LX型电动单梁悬挂起重机 LX Model Single Beam Suspension Crane	P.35
SLX型手动单梁悬挂起重机 SLX Model Manual Operational Single Beam Suspension Crane	P.43
SL型手动单梁起重机 SL Model Manual Operational Single Beam Crane	P.45
LDZ型电动抓斗起重机 LDZ Electric Single Girder Grab Crane	P.47

防爆梁式起重机 Explosion Proof Beam Crane

LXB型防爆电动单梁悬挂起重机 LXB Type Explosion Proof Electric Single Girder Suspension Crane	P.51
LB型防爆电动单梁起重机 LB Type Explosion Proof Electric Single Girder Crane	P.58
LHB型防爆电动葫芦桥式起重机 LHB Type Explosion Proof Electric Hoist Double Girder Crane	P.66
LH型电动葫芦桥式起重机 LH Model Electric Hoist Bridge Crane	P.72
XG型电动悬挂过轨起重机 XG Electric Hanging Cross Track Crane	P.78



CD₁、MD₁电动葫芦

CD₁、MD₁ ELECTRIC HOIST

产品概述:

CD₁型, MD₁型钢丝绳电动葫芦是一种轻小型起重设备, 它可以安装在葫芦单梁、桥式起重机、门式起重机、悬臂起重机上。稍加改动, 还可作卷扬用。因此, 它是工厂、矿山、港口、仓库、货场、商店等常用的起重设备之一, 是提高劳动效率, 改善劳动条件的必备机械。

CD₁型电动葫芦的起升速度为常速, 可以满足一般使用要求; MD₁型电动葫芦具有两种起升速度——常速和慢速。慢速工作时, 可以满足精密装卸, 砂箱合模, 机床检修等精细作业的要求。所以, MD₁型电动葫芦的适用范围比CD₁型电动葫芦更为广泛。

为满足较大吨位起重作业的要求, 我厂还生产WH20T, 32T电动葫芦。

Product Introduction:

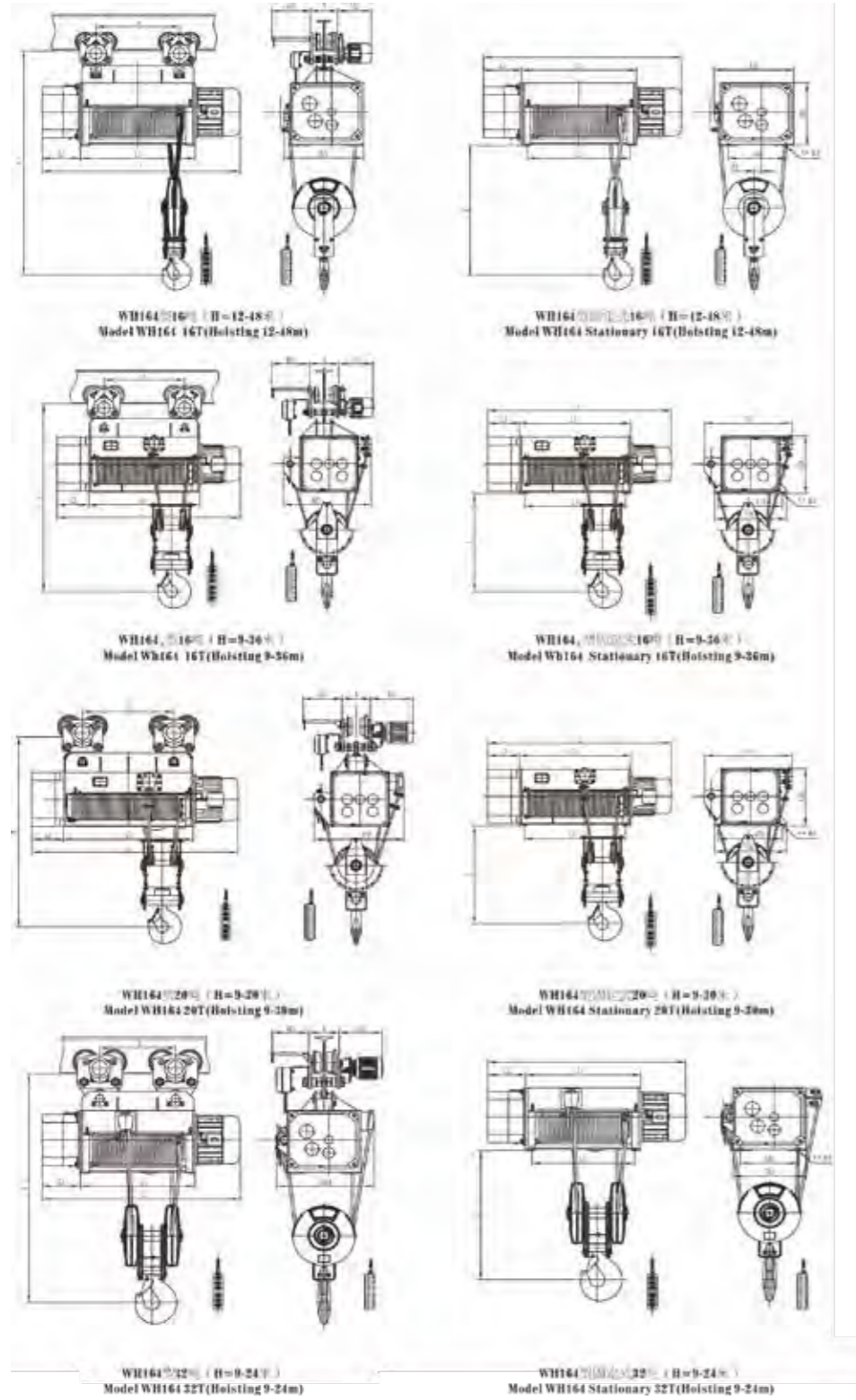
Model CD₁, MD₁ Wire rope Electric Hoist is a small-sized lifting equipment, which can be mounted on single beam, bridge, gantry and Jib cranes, With slight modification, it can also be used as a winch. It is widely used in factories, mines, harbours, warehouses, cargo storage areas and shops, essential in raising working efficiency and improving working conditions.

Model CD₁ Electric Hoist has only one normal speed, which can satisfy normal application, Model MD₁ Electric Hoist provides two speeds; normal speed and low speed, At a low speed, it can do precise loading and unloading, mounding of sand box, maintenance of machine tools, etc. Thus Model MD₁ Electric Hoists is more widely used than Model CD₁.

To meet the needs of lifting heavier cargo, our factory also manufactures WH20, WH32T Electric hoist.

WH电动葫芦

WH Electric Hoist



WH电动葫芦

WH Electric Hoist

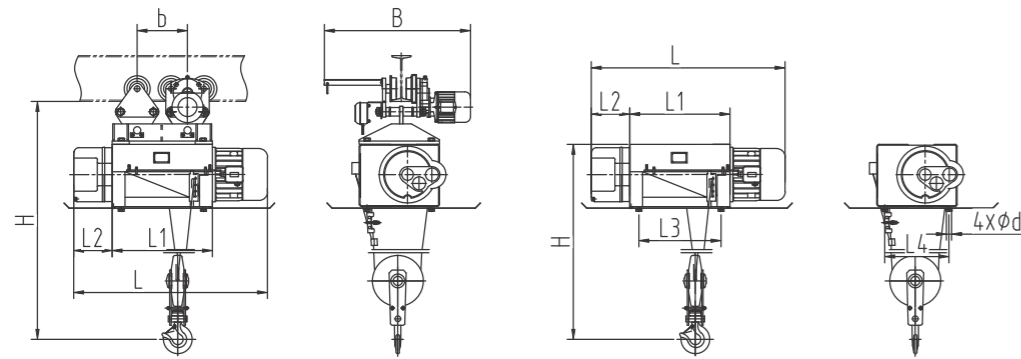
起重量	Capacity(t)																								
	16				20				26				32												
型号	WH164																								
起升高度	12	16	24	32	36	42	48	9	12	15	18	21	24	27	30	33	36	9	12	15	18	20	9	12	16
起升速度	6 (0.6/6)																								
运行速度	4.2(0.42/4.2)																								
钢丝绳	26																								
运行轨道	6x37																								
最小曲率半径	50a-63c																								
起升电机	ZD162-6(ZDS)				ZD162-4(ZDS)				ZD162-4(ZDS)				ZD162-4(ZDS)												
功率	18.5(2.2/18.5)				18.5(2.2/18.5)				18.5(2.2/18.5)				18.5(2.2/18.5)												
转速	960				960				960				960												
电流	43				43				43				43												
运行电机	ZDY121-4				ZDY121-4				ZDY121-4				ZDY121-4												
功率	0.8x2				0.8x2				0.8x2				0.8x2												
转速	1380				1380				1380				1380												
电流	2.4				2.4				2.4				2.4												
结合次数	120																								
工作制度	中级 Intermediate FC=25%																								
电 源	三相交流 Three phase AC 380V 50Hz																								
L	1666	1811	2106	2391	2546	2766	2986	1646	1735	1913	2091	2269	2447	2625	2803	2981	3159	1747	1942	2153	2364	2575	1913	2127	2412
L1	810	955	1250	1535	1690	1910	2130	808	986	1164	1342	1520	1698	1876	2054	2232	2410	948	1143	1354	1565	1776	1056	1270	1555
L2	396				330				330				330												
L3	685	830	1125	1410	1565	1785	2005	700	878	1056	1234	1412	1590	1768	1946	2124	2302	840	1035	1246	1457	1668	916	1130	1415
L4	600				670				670				670												
b	505	650	945	1230	1385	1605	1825	488	666	844	1022	1200	1378	1556	1734	1912	2090	548	743	954	1165	1376	656	870	1155
B	288~310																								
H	2600(1300)																								
d	2500(1300)																								
运行	25																								
自重	2100	2200	2400	2550	2650	2800	2900	1530	1602	1673	1745	1816	1887	1959	2030	2100	2173	1838	1927	2025	2169	2240	2885	2950	3270
固定	1700	1800	2000	2150	2225	2400	2500	1183	1255	1308	1379	1450	1522	1593	1665	1736	1807	1375	1453	1539	1630	1759	2115	2170	2475
Fix																									

产品概述:

- 1.冶金电动葫芦主要用于吊运熔融金属;
- 2.起重量≤10t,起高度≤20m,工作环境温度-20~60°C;
- 3.具有双制动、双限位、隔热板等多种保护功能。

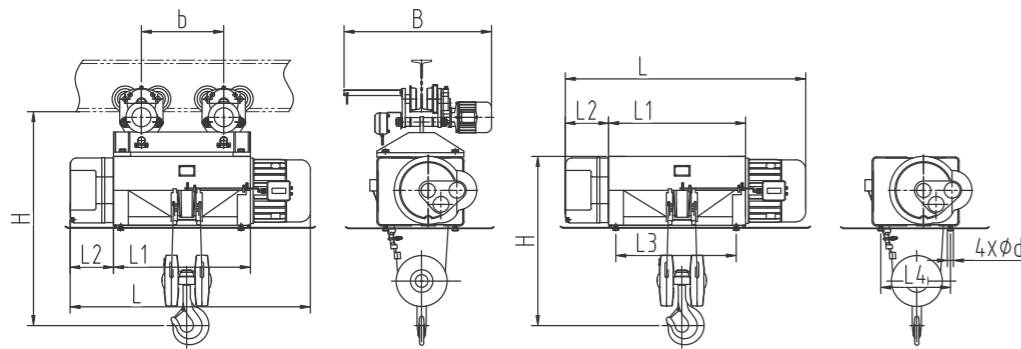
Product Introduction:

1. Metallurgical electric hoist mainly used for lifting molten metal.
2. Lifting capacity ≤10t, Lifting height ≤20m, Work environment temperature -20~60°C.
3. With double brakes, double limits, thermal baffle felt etc.many kinds of protection functions.



YH₁ 2-5吨 (H=9-20米)
Model YH₁ 2-5t (H=9-20m)

YH₁ 固定式2-5吨 (H=9-20米)
Model YH₁ Stationary 2-5t (H=9-20m)



YH₁ 10吨 (H=9-20米)
Model YH₁ 10t (H=9-20m)

YH₁ 固定式10吨 (H=9-20米)
Model YH₁ Stationary 10t (H=9-20m)

起重量	Capacity(t)	2					3					5					10									
型号	Type	YH _n																								
起升高度	Hoisting height (m)	9	12	15	18	20	9	12	15	18	20	9	12	15	18	20	9	12	15	18	20					
起升速度	Hoisting speed (m/min)	8 (8/2)															7(7/1.75)									
运行速度	Travel speed (m/min)	20																								
钢丝绳	Dia(mm)	11					13					15														
	Specification	6x37+IWR																								
运行轨道	Track	20a-28b										25a-45a					32b-45a									
最小曲率半径	Min curvature radius (m)	2	3	4	5	6	2	3	4	5	6	2.5	3	4	5	6	3.5	4	6	7.5	9					
起升电机	型号	Type	ZD,31-4(ZDD32-4/16)					ZD,32-4(ZDD41-4/16)					ZD,41-4(ZDD51-4/16)					ZD,51-4(ZDD52-4/16)								
	功率	Power(kW)	3.0(3.0/0.75)					4.5(4.5/1.25)					7.5(7.5/2.0)					13(13/3.25)								
	转速	Rotation speed (r/min)	1380/345					1380/290					1400/345					1400/300								
	电流	Current(A)	7.6(6.5/7.1)					11(13.1/12.8)					18(18/17.5)					30(30/31)								
运行电机	型号	Type	ZDY,12-4										ZDY,21-4					ZDY,21-4								
	功率	Power(kW)	0.4										0.8					0.8x2								
	转速	Rotation speed (r/min)	1380																							
	电流	Current(A)	1.25										2.4													
结合次数	No.of connecting (次)	300																								
工作制度	Working system	FC=50%																								
电源	Power source	三相交流 Three phase AC 380V 50Hz																								
基本尺寸	L	1044	1147	1250	1353	1424	1110	1213	1316	1419	1490	1256	1356	1456	1556	1626	1647	1828	2009	2190	2310					
	L1	559	662	765	868	939	559	662	765	868	939	600	700	800	900	970	950	1131	1312	1493	1613					
	L2	192					234					272					278									
	L3	439	542	645	748	819	439	542	645	748	819	470	570	670	770	840	825	1006	1187	1368	1488					
	L4	362					362					448					486									
	b	205	332	435	538	609	205	332	435	539	609	228	352	452	552	622	574	755	936	1117	1237					
	B	950										1055														
	H	1300					1315					1400					1590					1600				
	d	25																								
	自重 ±10%	运行 Operate	Crane Weight (kg)	439	457	479	494	505	475	493	515	530	541	679	752	776	794	809	1169	1221	1282	1326	1396			
固定 Fix		Crane Weight (kg)	409	427	449	464	475	445	463	485	500	511	644	717	741	759	774	1129	1181	1242	1286	1356				

HB型防爆钢丝绳电动葫芦

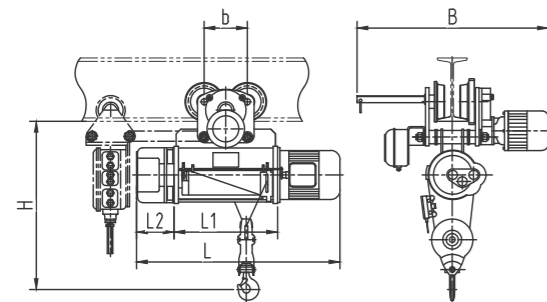
HB Model Explosion Proof Wire Rope Electric Hoist

产品概述:

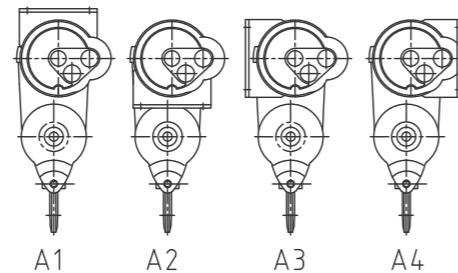
- 1.HB防爆钢丝绳电动葫芦为系列产品,机械结构与普通CD、HC电动葫芦一致。
- 2.防爆标志分别为ExdIIBT4、ExdIICT4、DIPA21TA、T4及Exd I Mb。
- 3.工作级别为M3,工作环境温度为一20°C~40°C。

Product Introduction:

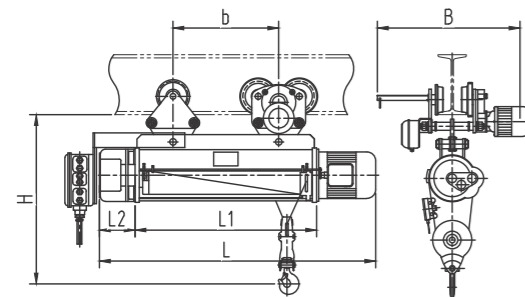
1. The mechanical structure for Series of HB Explosion-proof electric hoists is same with common CD、HC electric hoists.
2. For each of the Explosion-proof sign is ExdIIBT4、ExdIICT4、DIPA21TA、T4 and Exd I Mb.
3. Working class M3, Work environment temperature-20~40°C.



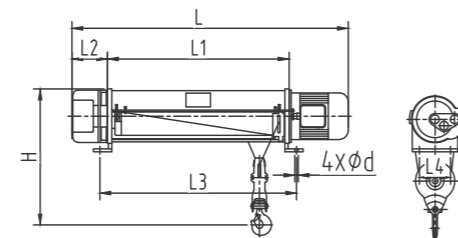
HB 0.25-5吨 (H=6-9米)
Model HB 0.25-5t (H=6-9m)



HB型固定式
Model HB Stationary



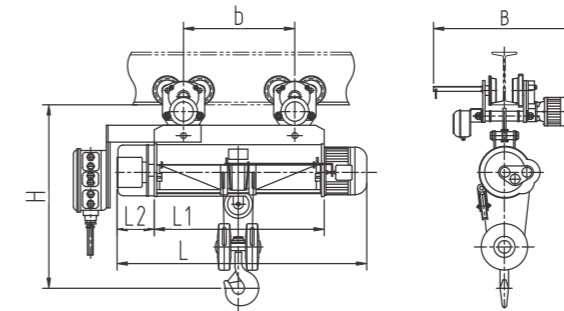
HB 0.5-5吨 (H=12-30米)
Model HB 0.5-5t (H=12-30m)



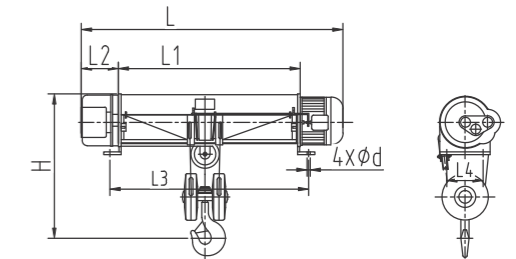
HB 固定式0.5-5吨 (H=12-30米)
Model HB Stationary 0.5-5t (H=12-30m)

HB型防爆钢丝绳电动葫芦

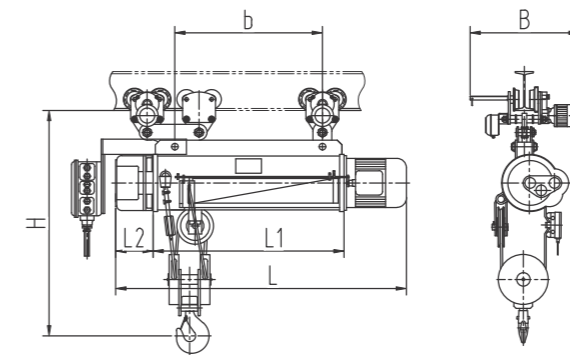
HB Model Explosion Proof Wire Rope Electric Hoist



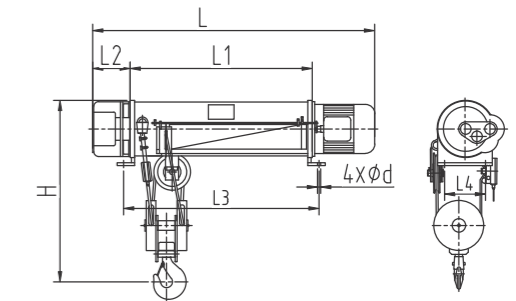
HB 10吨 (H=9-30米)
Model HB 10t (H=9-30m)



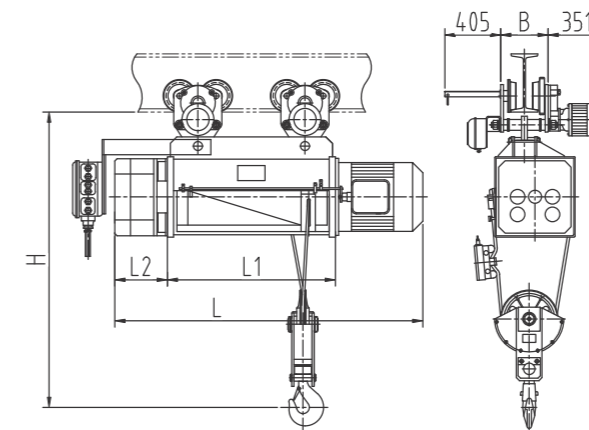
HB固定式 10吨 (H=9-30米)
Model HB Stationary 10t (H=9-30m)



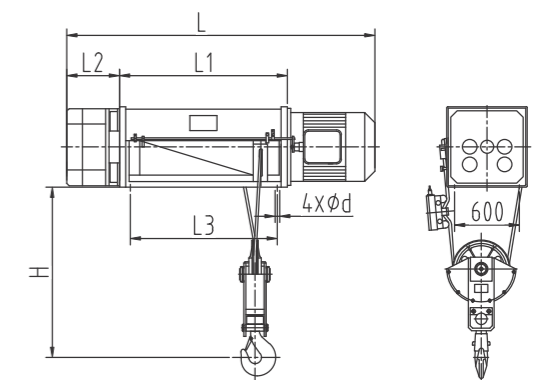
HB 16吨 (H=9-30米)
Model HB 16t (H=9-30m)



HB 固定式 16吨 (H=9-30米)
Model HB Stationary 16t (H=12-30m)



HB 16吨 (H=12-48米)
Model HB 16t (H=12-48m)



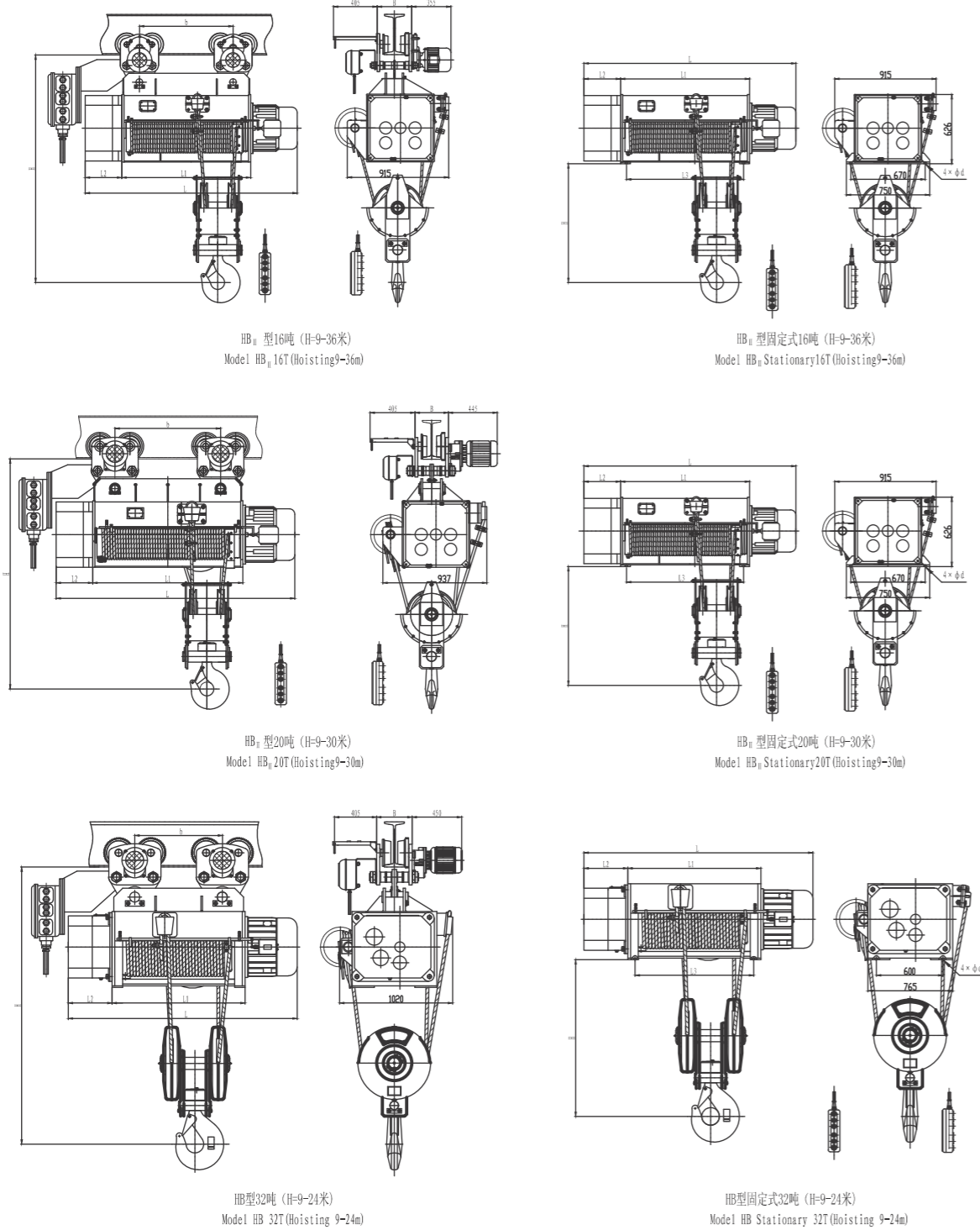
HB 固定式 16吨 (H=12-48米)
Model HB Stationary 16t (H=12-48m)

HB型防爆钢丝绳电动葫芦

HB Model Explosion Proof Wire Rope Electric Hoist

HB型防爆钢丝绳电动葫芦

HB Model Explosion Proof Wire Rope Electric Hoist



型号 Type	HB(Exd)HB(T4,Exd)ICT4																																					
	0.5			1			2			3			5			10			16																			
起重量 Capacity(t)	6	9	12	18	24	30	6	9	12	18	24	30	6	9	12	18	24	30	6	9	12	18	24	30														
起升高度 Hoisting(m)	8(0.8/8)																																					
起升速度 Hoisting speed (m/min)	3.5 (0.35/3.5)																																					
运行速度 Travel speed (m/min)	20																																					
钢丝绳 结构 Specification	6x37+FC																																					
运行轨道 Track	16-28b			20a-28b			25a-45a			32b-45a			32b-63c																									
最小曲率半径 Min curvature radius(m)	1.5			2			2.5			3			4			4.5			6			7.5			9			11										
起升电机 Type	BZD.2.1-4			BZD.2.2-4			BZD.3.1-4			BZD.3.2-4			BZD.4.1-4			BZD.5.1-4			BZD.5.1-4			BZD.5.1-4			BZD.5.1-4			BZD.5.1-4										
功率 Power(kW)	0.8(0.4/0.8)			1.5(0.4/1.5)			3.0(0.4/3.0)			4.5(0.4/4.5)			7.5(0.8/7.5)			13(2.2/13)																						
转速 Rotation speed (r/min)	1380																																					
电流 Current(A)	2.4(0.72/2.4)			4.3(0.72/4.3)			7.6(1.25/7.6)			11(1.25/11)			18(2.4/18)			30(5.2/30)																						
运行电机 Type	BZDY.11-4			BZDY.12-4			BZDY.12-4			BZDY.12-4			BZDY.21-4			BZDY.21-4																						
功率 Power(kW)	0.2			0.4			0.4			0.8			0.8			0.8x2																						
转速 Rotation speed (r/min)	1380																																					
电流 Current(A)	0.72			1.25			2.4			2.4			2.4x2																									
结合次数 No. of connecting (次)	120																																					
工作制度 Working system	中级 intermediate FC=25%																																					
电源 Power source	三相交流 Three-phase AC 380V 50Hz																																					
L	616	688	760	758	856	954	1150	1346	1542	1820	2020	1020	1220	1420	1620	1832	1035	1138	1344	1550	1756	1047	1157	1257	1467	1677	1887	1602	1783	2145	2507	2869	1872	2092	2532	2952	3387	
L1	274	346	418	345	443	541	737	933	1129	1355	1452	552	752	952	1152	1380	483	586	792	998	1204	415	525	625	835	1045	1255	875	1056	1418	1780	2142	1136	1356	1796	2162	2616	
L2	132	159	196	159	196	240	188	233	268	268	302	233	268	302	337	268	302	337	372	407	442	268	302	337	372	407	442	477	512	547	582	617	652	687	722	757	792	827
L3	190	390	462	404	499	597	793	989	1185	1481	1818	618	818	1018	1218	1448	551	654	860	1066	1272	485	606	695	905	1115	1325	949	1130	1492	1854	2216	2101	430	1870	2250	2690	
L4	884	884	884	884	884	884	884	884	884	884	884	884	884	884	884	884	884	884	884	884	884	884	884	884	884	884	884	884	884	884	884	884	884	884	884	884	884	884
B	650	667	667	667	667	667	667	667	667	667	667	667	667	667	667	667	667	667	667	667	667	667	667	667	667	667	667	667	667	667	667	667	667	667	667	667	667	667
H	17	17	17	17	17	17	17	17	17	17	17	17	17	17	17	17	17	17	17	17	17	17	17	17	17	17	17	17	17	17	17	17	17	17	17	17	17	17
d	17	20	20	20	20	20	20	20	20	20	20	20	20	20	20	20	20	20	20	20	20	20	20	20	20	20	20	20	20	20	20	20	20	20	20	20	20	20
b	185	185	185	185	185	185	185	185	185	185	185	185	185	185	185	185	185	185	185	185	185	185	185	185	185	185	185	185	185	185	185	185	185	185	185	185	185	185
CD1	171	175	180	187	195	222	238	254	270	271	282	335	359	382	393	331	347	404	440	470	501	517	575	677	726	766	806	1168	1218	1329	1421	1531	1250	1303	1406	1583	1683	
MD1	238	242	247	264	274	299	315	331	347	356	367	420	444	461	488	411	427	484	520	550	581	608	632	754	803	843	883	1224	1274	1385	1486	1587	1340	1393	1496	1673	1773	
CD1固	139	144	149	155	162	170	185	209	215	216	229	236	259	279	299	273	286	300	334	362	390	437	480	495	536	573	609	915	961	1063	1155	1247	970	1023	1126	1303	1403	
MD1固	206	211	216	223	240	247	262	277	292	301	311	321	344	364	384	352	366	380	414	442	470	530	557	572	613	649	686	971	1017	1119	1211	1303	1069	1117	1210	1393	1493	

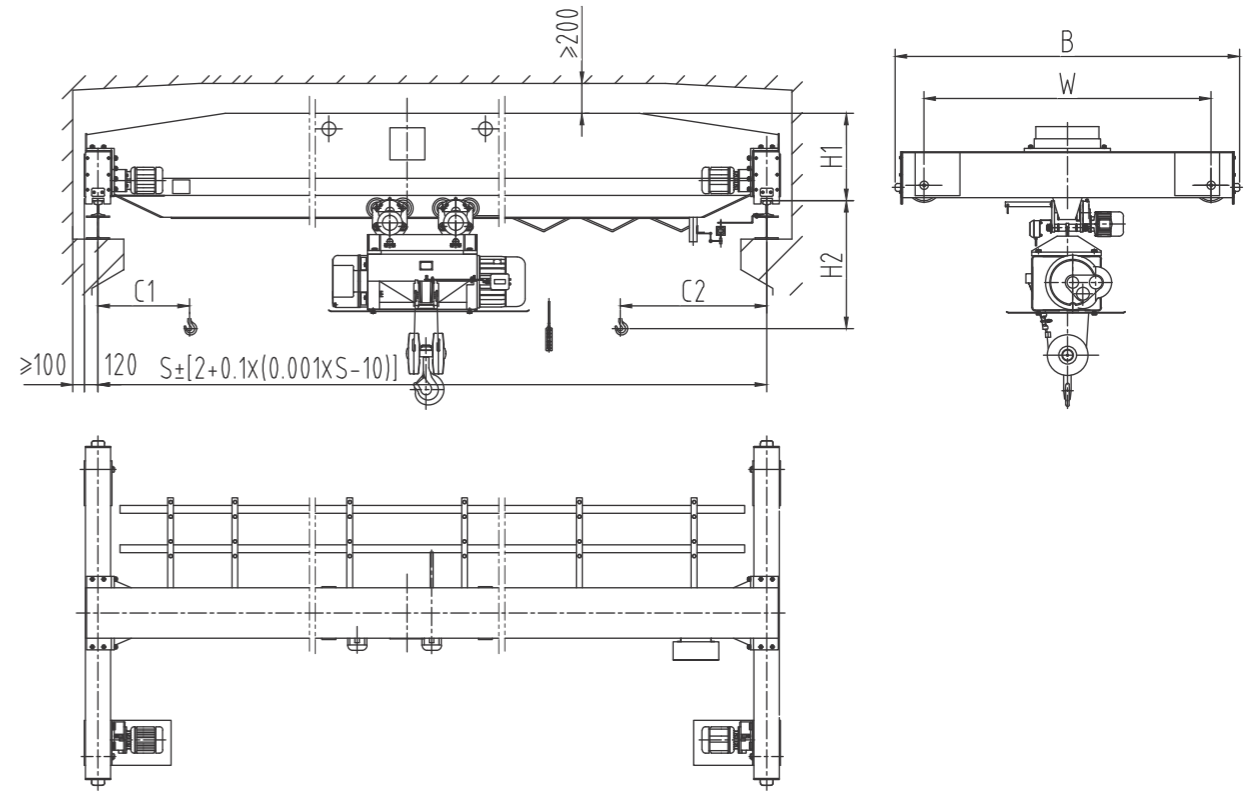
HB型防爆钢丝绳电动葫芦

HB Model Explosion Proof Wire Rope Electric Hoist

起重量	16																20																32															
型号	HB(Exd)IBT4, Exd(IICT4)																																															
起升高度	12 16 24 32 36 42 48 9 12 15 18 21 24 27 30 33 36 4.2(0.42/4.2)																15 18 21 24 27 30 33 36 4.2(0.42/4.2)																18 21 24 27 30 33 36 4.2(0.42/4.2)															
起升速度	6 (0.6/6)																4.2(0.42/4.2)																3(0.3/3)															
运行速度	18																14																16															
钢丝绳	26																17.5																21.5															
结构	6x37																																															
运行轨道	50a-63c																56a-63c																63c以上															
最小曲率半径	EZO62-6(BZDS)																EZO51-4(BZDS)																EZO152-4(BZDS)															
型号	18.5(2.2/18.5)																13(2.2/13)																18.5(2.2/18.5 4根)															
功率	960																1400																960															
转速	43																30(5.2/30)																42															
电流	EZOY1(21-4)																EZOY1(D)21-4																EZOY1(D)22-4															
运行电机	0.8×2																0.8×2																1.5×2															
结合次数	2.4																																															
工作次数	120																																															
电 源	中级Intermediate FC-25% 三相交流Three phase AC 380V 50Hz																																															
L	1666	1811	2106	2391	2546	2766	2986	1646	1735	1913	2091	2269	2447	2625	2803	2981	3159	1747	1942	2153	2364	2575	2786	2997	3208	1913	2127	2412	2697	2982																		
L1	810	955	1250	1535	1690	1910	2130	808	986	1164	1342	1520	1698	1876	2054	2232	2410	948	1143	1354	1565	1776	1987	2198	2409	1056	1270	1555	1840	2125																		
L2	396																330																396															
L3	685	830	1125	1410	1565	1785	2005	700	878	1056	1234	1412	1590	1768	1946	2124	2302	840	1035	1246	1457	1668	1879	2090	2301	916	1130	1415	1700	1985																		
L4	600																670																600															
b	505	650	945	1230	1385	1605	1825	488	666	844	1022	1200	1378	1556	1734	1912	2090	548	743	954	1165	1376	1587	1798	2009	656	870	1155	1440	1725																		
B	288-310																288-310																320															
H	2600(1300)																2300(1300)																2500(1500)															
d	25																																															
自重±10% 额定 FX	2300	2400	2600	2750	2850	3000	3100	1730	1802	1873	1945	2016	2087	2159	2230	2300	2373	2038	2127	2225	2369	2440	2520	2644	2727	3085	3150	3470	3695	3900																		
	1850	1950	2150	2300	2375	2550	2650	1333	1405	1458	1529	1600	1672	1743	1815	1886	1957	1525	1603	1689	1780	1909	1988	2112	2195	2265	2320	2625	2840	3030																		

LDY型冶金电动单梁起重机

LDY Model Electric Single Girder Crane



产品概述:

- 1、LDY冶金电动单梁主要用于吊运熔融金属。
- 2、起重量≤10t, 主梁底部采用特殊隔热处理, 工作环境温度-20~60°C。

Product Introduction:

1. LDY single girder Metallurgical crane mainly used for lifting molten metal.
2. Lifting capacity ≤10t, Dealing with special thermal baffle felt for main girder , Work environment temperature-20-60°C.

LDY型冶金电动单梁起重机

LDY Model Electric Single Girder Crane

起重机运行机构 crane travelling mechanism	运动速度m/min travelling speed	20	30
	速比speed ratio	58.95	39.42
	电动机 Motor	锥形鼠笼型 squirrel-cage	
	型号 type	YH ₀ 型 YH ₀ model	
起升机构(电动葫芦)及运行机构 lifting mechanism (electric hoist) & electric hoist travelling mechanism	功率(kw) power	0.8×2、1.5×2	
	转速(r/min) rotational speed	1380	
	电动机形式 model of electric hoist	YH ₀ 型 YH ₀ model	
	起升速度(m/min) lifting speed	8、7	
工作制度 working system	起升高度H(m) lifting height	9、12、15、18、20	
	运动速度(m/min) travelling speed	20	
	电动机 motor	锥形鼠笼型 squirrel-cage model	
	电 源 electric current	380V 50Hz three-phase	
车 轮 直 径 wheel diameter	φ 270、φ 400		
轨 道 面 宽 width of trail	37~70		

起重量 Lifting capacity	跨度 Span	起重机总重 Crane total weight	最大轮压 Max. wheel load	最小轮压 Min. wheel load	基本尺寸 (mm) Basic dimensions										
					踏面至主梁顶 H1 (mm) Wheel tread approach to top	踏面至吊钩中心 H2 (mm) Wheel tread approach to center of hook	端梁轮距 W (mm) End carriage wheelbase	端梁总长 B (mm) Total length of end carriage	吊钩左极限 C1 (mm) Hook approach to limit position on the left	吊钩右极限 C2 (mm) Hook approach to limit position on the right					
2	7.5	1.92	16.1	4.1	530	1270	1500	2000	871	1291					
											8	1.97	16.4	4.2	
											8.5	2.03	16.6	4.3	
											9	2.09	16.8	4.5	
											9.5	2.14	17	4.6	
											10	2.19	17.2	4.7	
											10.5	2.25	17.4	4.9	
	2	11.5	2.41	18	5.3	580	1270	2000	2500	871	1291				
												12	2.47	18.2	5.4
												12.5	2.53	18.3	5.5
												13	2.58	18.5	5.7
												13.5	2.64	18.7	5.8
												14	2.70	18.9	5.9
												14.5	3.18	20.1	7.2
												15	3.25	20.3	7.3
												15.5	3.32	20.5	7.5
												16	3.39	20.7	7.7
2	16.5	3.46	20.9	7.9	660	1290	2000	2500	871	1291					
											16.5	3.46	20.9	7.9	
											17	3.53	21.1	8	
											17	3.53	21.1	8	

LDY型冶金电动单梁起重机

LDY Model Electric Single Girder Crane

起重量 Lifting capacity	跨度 Span	起重机总重 Crane total weight	最大轮压 Max. wheel load	最小轮压 Min. wheel load	基本尺寸 (mm) Basic dimensions																				
					踏面至主梁顶 H1 (mm) Wheel tread approach to top	踏面至吊钩中心 H2 (mm) Wheel tread approach to center of hook	端梁轮距 W (mm) End carriage wheelbase	端梁总长 B (mm) Total length of end carriage	吊钩左极限 C1 (mm) Hook approach to limit position on the left	吊钩右极限 C2 (mm) Hook approach to limit position on the right															
2	17.5	3.74	21.7	8.5	725	1305	2500	3000	871	1291															
											18	3.81	21.9	8.7											
											18.5	3.88	22.1	8.9											
											19	3.95	22.3	9.1											
											19.5	4.03	22.5	9.3											
											20	4.79	24.4	11.2											
											20.5	4.88	24.6	11.4											
	2	21	4.96	24.9	11.6	835	1295	3000	3500	871	1291														
												21.5	5.06	25.1	11.8										
												22	5.14	25.3	12										
												22.5	5.23	25.6	12.2										
												23	5.55	26.4	13										
												23.5	5.64	26.6	13.3										
												24	5.73	26.9	13.5										
												24.5	5.82	27.1	13.7										
												25	5.91	27.3	13.9										
												25.5	6.01	27.6	14.2										
2	26	7.58	31.5	18.1	880	1330	3500	4000	871	1291															
											26.5	7.70	31.8	18.4											
											27	7.80	32.1	18.7											
											27.5	7.93	32.4	19											
											28	8.03	32.7	19.2											
											28.5	8.16	33	19.5											
											3	7.5	2.27	18.9	4.6	580	1460	1500	2000	842	1310				
																						8	2.33	19.3	4.7
																						8.5	2.40	19.6	4.9
																						9	2.46	19.9	5
9.5	2.53	20.2	5.2																						
10	2.59	20.5	5.3																						
10.5	2.66	20.8	5.5																						
3	11	2.72	21	5.6	660	1460	2000	2500	842	1310															
												11.5	2.91	21.6	6.1										
												12	2.98	21.8	6.3										
												12.5	3.05	22.1	6.4										
												13	3.12	22.3	6.6										
												13.5	3.19	22.6	6.8										
												14	3.26	22.8	6.9										
												14.5	3.48	23.4	7.5										
												15	3.55	23.7	7.7										
												15.5	3.63	23.9	7.9										
3	16	3.70	24.1	8	725	1475	2000	2500	842	1310															
											16.5	3.77	24.4	8.2											
											17	3.84	24.6	8.4											
											17	3.84	24.6	8.4											

LDY型冶金电动单梁起重机

LDY Model Electric Single Girder Crane

起重量 Lifting capacity t	跨度 Span S(m)	起重机总重 Crane total weight G(t) Ground controlling	最大轮压 Max. wheel load Rmax (kN)	最小轮压 Min. wheel load Rmin (kN)	基本尺寸 (mm) Basic dimensions								
					踏面至主梁顶 H1 (mm) Wheel tread approach to top	踏面至吊钩中 心 H2 (mm) Wheel tread approach to center of hook	端梁轮距 W (mm) End carriage wheelbase	端梁总长 B (mm) Total length of end carriage	吊钩左极限 C1 (mm) Hook approach to limit position on the left	吊钩右极限 C2 (mm) Hook approach to limit position on the right			
3	17.5	4.49	26.2	10	835	1465	2500	3000	842	1310			
	18	4.57	26.5	10.2									
	18.5	4.66	26.7	10.4									
	19	4.74	27	10.6									
	19.5	4.84	27.2	10.8									
	20	5.14	28	11.6									
	20.5	5.24	28.3	11.8	880	1500	3000	3500	842	1310			
	21	5.32	28.5	12									
	21.5	5.42	28.8	12.3									
	22	5.50	29	12.5									
	22.5	5.60	29.3	12.7									
	23	6.32	31.1	14.6									
	23.5	6.44	31.4	14.8	940	1540	3500	4000	842	1310			
	24	6.53	31.7	15.1									
	24.5	6.64	32	15.3									
	25	6.74	32.2	15.6									
	25.5	6.85	32.5	15.9									
	26	8.41	36.4	19.7									
26.5	8.54	36.8	20.1	1020	1520	4000	4500	842	1310				
27	8.66	37.1	20.4										
27.5	8.79	37.5	20.7										
28	8.91	37.8	21										
28.5	9.04	38.1	21.3										
29	9.17	38.4	21.6										
5	7.5	2.77	30.8	5.9	735	1815	1500	2000	1293	1893			
	8	2.84	31.6	6									
	8.5	2.92	32.3	6.1									
	9	2.99	33	6.3									
	9.5	3.07	33.6	6.4									
	10	3.14	34.2	6.5									
	10.5	3.22	34.7	6.7									
	11	3.29	35.2	6.9	835	1815	2000	2500	1293	1893			
	11.5	3.66	36.4	7.8									
	12	3.74	36.9	7.9									
	12.5	3.83	37.3	8.1									
	13	3.92	37.8	8.3									
	13.5	4.01	38.2	8.5									
	14	4.09	38.6	8.7									
	14.5	4.35	39.4	9.4	890	1840	2000	2500	1293	1893			
	15	4.43	39.8	9.5									
	15.5	4.53	40.2	9.8									
16	4.62	40.5	10	2500			3000						
16.5	4.71	40.9	10.2										
17	4.80	41.2	10.4										
17.5	4.89	41.5	10.6										

LDY型冶金电动单梁起重机

LDY Model Electric Single Girder Crane

起重量 Lifting capacity t	跨度 Span S(m)	起重机总重 Crane total weight G(t) Ground controlling	最大轮压 Max. wheel load Rmax (kN)	最小轮压 Min. wheel load Rmin (kN)	基本尺寸 (mm) Basic dimensions								
					踏面至主梁顶 H1 (mm) Wheel tread approach to top	踏面至吊钩中 心 H2 (mm) Wheel tread approach to center of hook	端梁轮距 W (mm) End carriage wheelbase	端梁总长 B (mm) Total length of end carriage	吊钩左极限 C1 (mm) Hook approach to limit position on the left	吊钩右极限 C2 (mm) Hook approach to limit position on the right			
5	17.5	5.30	42.5	11.8	880	1950	2500	3000	1293	1893			
	18	5.40	42.9	12									
	18.5	5.51	43.3	12.3									
	19	5.60	43.6	12.5									
	19.5	5.72	44	12.8									
	20	6.54	46.1	14.8									
	20.5	6.65	46.5	15.1	920	1970	3000	3500	1293	1893			
	21	6.76	46.9	15.3									
	21.5	6.89	47.3	15.7									
	22	7.00	47.6	15.9									
	22.5	7.13	48	16.2									
	23	8.26	51.9	20.1									
	23.5	8.38	52.4	20.5	1065	1865	3500	4000	1293	1893			
	24	8.51	52.8	20.8									
	24.5	8.68	53.3	21.2									
	25	8.80	53.6	21.5									
	25.5	8.93	54.1	21.9									
	26	12.74	62.5	30.2									
26.5	12.94	63	30.7	1160	1890	4000	4700	1293	1893				
27	13.11	63.5	31.2										
27.5	13.31	64.1	31.7										
28	13.51	64.6	32.1										
28.5	13.71	65.1	32.6										
29	13.91	65.6	33.1										
10	7.5	3.66	51.5	6.6	835	2445	1500	2000	1293	1893			
	8	3.74	52.7	6.8									
	8.5	3.84	53.7	7									
	9	3.93	54.7	7.1									
	9.5	4.02	55.6	7.3									
	10	4.11	56.4	7.5									
	10.5	4.21	57.1	7.7									
	11	4.30	57.8	7.9	890	2470	2000	2500	1293	1893			
	11.5	4.69	59.3	8.9									
	12	4.79	59.9	9.1									
	12.5	4.90	60.6	9.4									
	13	5.00	61.1	9.6									
	13.5	5.11	61.7	9.8									
	14	5.21	62.3	10.1									
	14.5	6.03	64.6	12.1	980	2520	2000	2500	1293	1893			
	15	6.15	65.2	12.4									
	15.5	6.28	65.7	12.7									
16	6.40	66.2	13	2500			3000						
16.5	6.53	66.8	13.3										
17	6.64	67.3	13.5										
17.5	6.75	67.8	13.8										

LDY型冶金电动单梁起重机

LDY Model Electric Single Girder Crane

起重量 Lifting capacity t	跨度 Span S(m)	起重机总重 Crane total weight G (t) Ground controlling	最大轮压 Max. wheel load Rmax (kN)	最小轮压 Min. wheel load Rmin (kN)	基本尺寸 (mm) Basic dimensions					
					踏面至主梁顶 H1 (mm) Wheel tread approach to top	踏面至吊钩中心 H2 (mm) Wheel tread approach to center of hook	端梁轮距 W (mm) End carriage wheelbase	端梁总长 B (mm) Total length of end carriage	吊钩左极限 C1 (mm) Hook approach to limit position on the left	吊钩右极限 C2 (mm) Hook approach to limit position on the right
10	17.5	7.62	69.9	16	1065	2495	2500	3000	1293	1893
	18	7.75	70.4	16.3						
	18.5	7.91	71	16.7						
	19	8.04	71.4	17						
	19.5	8.21	72	17.4						
	20	8.70	73.4	18.6	1135	2545	3000	3500	1293	1893
	20.5	8.86	73.9	19						
	21	9.01	74.4	19.4						
	21.5	9.17	74.9	19.8						
	22	9.31	75.4	20.1						
	22.5	9.48	75.9	20.5	1200	2590	3500	4200	1293	1893
	23	12.44	83.4	27.9						
	23.5	12.65	84.1	28.5						
	24	12.83	84.6	28.9						
	24.5	13.04	85.3	29.4						
	25	13.23	85.8	29.9	1300	2600	4000	4700	1293	1893
	25.5	13.44	86.4	30.4						
	26	14.53	89.2	33.1						
	26.5	14.75	89.9	33.7						
	27	14.94	90.4	34.1						
	27.5	15.17	91.1	34.7						
	28	15.37	91.6	35.2						
	28.5	15.57	92.2	35.7						

注: 1.如有其他要求,请在订货时特别提出。

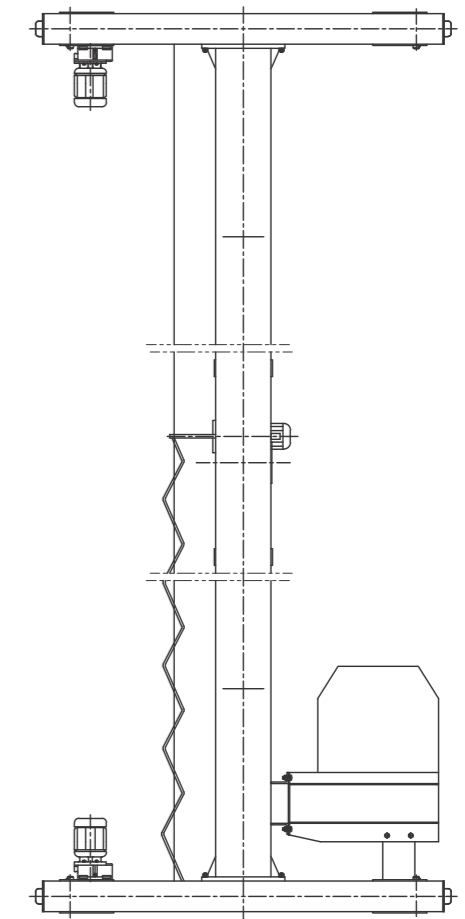
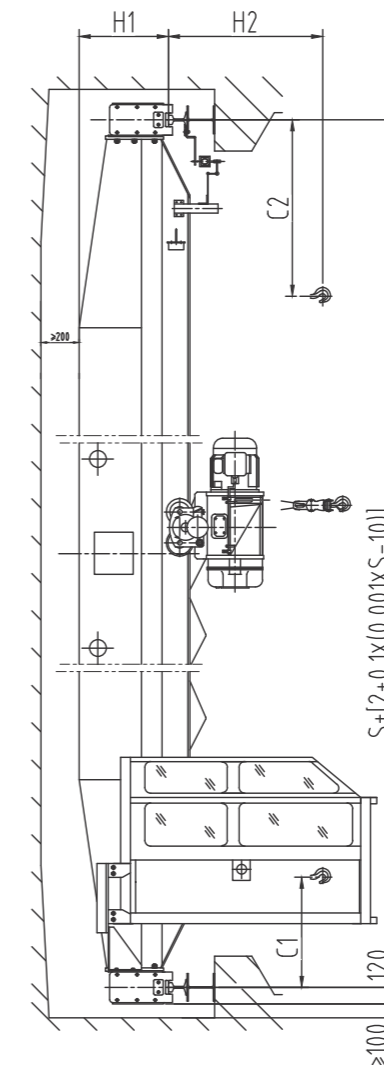
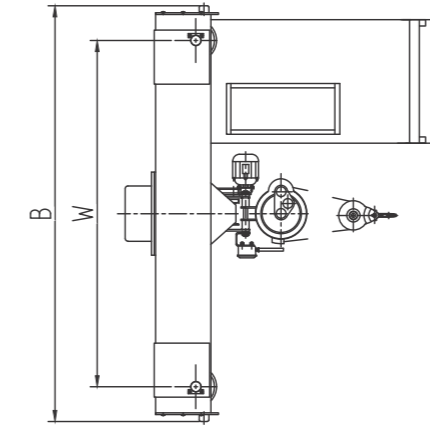
2.我公司保留在无需任何通知的情况下对以上信息进行变更的权力。

Note: 1.Other requirements please put forward when you place an order.

2.We reserve the right to change above information without any notice.

LD型电动单梁起重机

LD Model Electric Single Girder Crane



LD型电动单梁起重机

LD Model Electric Single Girder Crane

产品概述:

- LD型电动单梁起重机具有结构合理, 整机刚性强的特点。整机与CD₁型、MD₁型电动葫芦配套使用, 是一种轻小型的起重机械。其起重量为1t-20t, 跨度为7.5-28.5m, 工作级别为A3-A4, 工作环境温度为-25°C~40°C。
- 本产品广泛用于工厂、仓库、料场等不同场合吊运货物, 禁止在易燃、易爆、腐蚀性介质环境中使用。
- 本产品设有地面和操纵室两种操作形式。操纵室有开式、闭式两种, 可根据实际情况分别为左或右面安装两种形式, 入门方向有侧面及端面两种, 以满足用户在各种不同需要的情况下进行选择。

Product Introduction:

- LD model single girder motor crane is characterized by more reasonable structure and higher strength steel as a whole, Used together with CD₁ model、MD₁ model electric hoist as a complete set , it is light duty crane with a capacity of 1 to 20 tons. The span is 7.5-28.5m. Working grade is A3-A4. Working temperature is -25°C to 40°C.
- This product is widely used in plants, warehouses, material stocks to lift goods. It is prohibited to use the equipment in the combustibile, explosive or corrosive environment.
- This product has two operational methods, ground control or operational room which has open model and closed model and can be installed on left or right side according to the practical situation . And the direction of entering the gate has two forms, from the side and the end in order to satisfy the users, choice under different conditions.

技术规格 Technical Specifications

起动机 运行机构 crane travelling mechanism	运动速度m/min travelling speed	20	30	(室room)45	(室room)60	
	速比speed ratio	58.95	39.42	26.51	19.44	
	电动机 Motor	型号 type	锥形鼠笼cone squirrel-cage		锥形绕线cone winding thread	
		功率(kW)power	0.8×2、1.5×2、2.2×2		1.5×2、2.1×2	
转速(r/min) rotational speed		1380		1350		
起升机构 (电动葫芦) 及运行机构 lifting mechanism (electric hoist)& electric hoist travelling mechanism	电动葫芦型式 model of electric hoist	MD ₁ 型 model		CD ₁ 型 model		
	起升速度(m/min) lifting speed	8/0.8、7/0.7、3.5/0.35		8、7、3.5		
	起升高度H(m) lifting height	6、9、12、18、24、30				
	运动速度(m/min) travelling speed	20、30				
	电动机motor	锥形鼠笼型cone squirrel-cage model				
工作级别 dutyclassification		中级intermediate Jc=25%				
电 源 electric current		380V 50Hz three-phase				
车轮直径 wheel diameter		φ 270、φ 400				
轨道面宽 width of rail		37~70				

LD型电动单梁起重机

LD Model Electric Single Girder Crane

起重量 Lifting capacity	跨度 Span	起重机总重 Crane total weight	最大轮压 Max. wheel load	最小轮压 Min. wheel load	基本尺寸 (mm) Basic dimensions					
					踏面至主梁顶 H1 (mm) Wheel tread approach to top	踏面至吊钩中 心 H2 (mm) Wheel tread approach to center of hook	端梁轮距 W (mm) End carriage wheelbase	端梁总长 B (mm) Total length of end carriage	吊钩左极限 C1 (mm) Hook approach to limit position on the left	吊钩右极限 C2 (mm) Hook approach to limit position on the right
t	7.5	1.59	8.7	3.7	490	910	1500	2000	796	1274
	8	1.64	8.9	3.8						
	8.5	1.68	9	3.9						
	9	1.73	9.2	4						
	9.5	1.78	9.3	4.2						
	10	1.83	9.5	4.3						
	10.5	1.87	9.6	4.4						
	11	1.92	9.8	4.5						
	11.5	1.96	9.9	4.6						
	12	2.01	10	4.7						
	12.5	2.06	10.2	4.8						
	13	2.11	10.3	5						
	13.5	2.15	10.4	5.1						
	14	2.2	10.5	5.2						
	14.5	2.39	11	5.7						
	15	2.44	11.2	5.8						
	15.5	2.49	11.3	5.9						
	16	2.54	11.4	6						
	16.5	2.59	11.6	6.2						
	17	2.64	11.7	6.3						
	17.5	2.85	12.2	6.8						
	18	2.9	12.4	6.9						
	18.5	2.95	12.5	7.1						
	19	3.01	12.6	7.2						
	19.5	3.06	12.8	7.3						
	20	3.26	13.3	7.8						
	20.5	3.32	13.4	8						
	21	3.37	13.6	8.1						
21.5	3.43	13.7	8.3							
22	3.49	13.9	8.4							
22.5	3.55	14	8.5							
23	4.26	15.8	10.3							
23.5	4.33	16	10.5							
24	4.4	16.2	10.7							
24.5	4.47	16.4	10.8							
25	4.54	16.5	11							
25.5	4.61	16.7	11.2							
26	5.25	18.3	12.8							
26.5	5.33	18.5	13							
27	5.41	18.7	13.2							
27.5	5.5	18.9	13.4							
28	5.57	19.1	13.6							
28.5	5.66	19.4	13.8							

LD型电动单梁起重机

LD Model Electric Single Girder Crane

起重量 Lifting capacity t	跨度 Span S(m)	起重机总重 Crane total weight G (t) Ground controlling	最大轮压 Max. wheel load Rmax (kN)	最小轮压 Min. wheel load Rmin (kN)	基本尺寸 (mm) Basic dimensions					
					踏面至主梁顶 H1 (mm) Wheel tread approach to top	踏面至吊钩中心 H2 (mm) Wheel tread approach to center of hook	端梁轮距 W (mm) End carriage wheelbase	端梁总长 B (mm) Total length of end carriage	吊钩左极限 C1 (mm) Hook approach to limit position on the left	吊钩右极限 C2 (mm) Hook approach to limit position on the right
2	7.5	1.68	13.6	3.7	490	1080	1500	2000	796	1274
	8	1.72	13.8	3.9						
	8.5	1.77	14	4						
	9	1.82	14.1	4.1						
	9.5	1.87	14.3	4.2						
	10	1.91	14.5	4.3						
	10.5	1.96	14.6	4.4						
	11	2.01	14.8	4.5						
	11.5	2.14	15.2	4.9	490	1125	2000	2500	796	1274
	12	2.19	15.3	5						
	12.5	2.24	15.5	5.1						
	13	2.29	15.6	5.2						
	13.5	2.34	15.8	5.3						
	14	2.39	15.9	5.5						
	14.5	2.67	16.7	6.2	580	1140	2000	2500	796	1274
	15	2.73	16.8	6.3						
	15.5	2.79	17	6.5			2500	3000		
	16	2.84	17.1	6.6						
	16.5	2.9	17.3	6.7						
	17	2.96	17.5	6.9	660	1160	2500	3000	796	1274
	17.5	3.48	18.8	8.2						
	18	3.55	19	8.4						
	18.5	3.62	19.2	8.5						
	19	3.69	19.3	8.7						
	19.5	3.76	19.5	8.9						
	20	4.03	20.2	9.5	725	1175	3000	3500	796	1274
	20.5	4.11	20.4	9.7						
	21	4.18	20.6	9.9						
21.5	4.25	20.8	10.1							
22	4.32	21	10.3							
22.5	4.4	21.2	10.5							
23	5.23	23.3	12.6	835	1165	3500	4000	796	1274	
23.5	5.33	23.5	12.8							
24	5.41	23.7	13							
24.5	5.5	24	13.2							
25	5.58	24.2	13.4							
25.5	5.68	24.4	13.7							
26	6.35	26.1	15.3	880	1200	4000	4500	796	1274	
26.5	6.45	26.4	15.6							
27	6.55	26.6	15.8							
27.5	6.65	26.9	16.1							
28	6.74	27.1	16.3							
28.5	6.85	27.4	16.6							

LD型电动单梁起重机

LD Model Electric Single Girder Crane

起重量 Lifting capacity t	跨度 Span S(m)	起重机总重 Crane total weight G (t) Ground controlling	最大轮压 Max. wheel load Rmax (kN)	最小轮压 Min. wheel load Rmin (kN)	基本尺寸 (mm) Basic dimensions					
					踏面至主梁顶 H1 (mm) Wheel tread approach to top	踏面至吊钩中心 H2 (mm) Wheel tread approach to center of hook	端梁轮距 W (mm) End carriage wheelbase	端梁总长 B (mm) Total length of end carriage	吊钩左极限 C1 (mm) Hook approach to limit position on the left	吊钩右极限 C2 (mm) Hook approach to limit position on the right
3	7.5	1.86	18.6	4.1	530	1270	1500	2000	819	1291
	8	1.91	18.9	4.2						
	8.5	1.97	19.1	4.3						
	9	2.03	19.3	4.5						
	9.5	2.08	19.5	4.6						
	10	2.13	19.7	4.7						
	10.5	2.19	19.9	4.9						
	11	2.24	20.1	5						
	11.5	2.35	20.5	5.3	580	1270	2000	2500	819	1291
	12	2.41	20.7	5.4						
	12.5	2.47	20.8	5.5						
	13	2.52	21	5.7						
	13.5	2.58	21.2	5.8						
	14	2.64	21.4	5.9						
	14.5	3.12	22.6	7.2	660	1290	2000	2500	819	1291
	15	3.19	22.8	7.3						
	15.5	3.26	23	7.5			2500	3000		
	16	3.33	23.2	7.7						
	16.5	3.4	23.4	7.9						
	17	3.47	23.6	8	725	1305	2500	3000	819	1291
	17.5	3.68	24.2	8.5						
	18	3.75	24.4	8.7						
	18.5	3.82	24.6	8.9						
	19	3.89	24.8	9.1						
	19.5	3.97	25	9.3						
	20	4.73	26.9	11.2	835	1295	3000	3500	819	1291
	20.5	4.82	27.1	11.4						
	21	4.9	27.4	11.6						
21.5	5	27.6	11.8							
22	5.08	27.8	12							
22.5	5.17	28.1	12.2							
23	5.49	28.9	13	880	1330	3500	4000	819	1291	
23.5	5.58	29.1	13.3							
24	5.67	29.4	13.5							
24.5	5.76	29.6	13.7							
25	5.85	29.8	13.9							
25.5	5.95	30.1	14.2							
26	7.52	34	18.1	940	1370	4000	4500	819	1291	
26.5	7.64	34.3	18.4							
27	7.74	34.6	18.7							
27.5	7.87	34.9	19							
28	7.97	35.2	19.2							
28.5	8.1	35.5	19.5							

LD型电动单梁起重机

LD Model Electric Single Girder Crane

LD型电动单梁起重机

LD Model Electric Single Girder Crane

起重量 Lifting capacity	跨度 Span	起重机总重 Crane total weight	最大轮压 Max. wheel load	最小轮压 Min. wheel load	基本尺寸 (mm) Basic dimensions					
					踏面至主梁顶 H1 (mm) Wheel tread approach to top	踏面至吊钩中 心 H2 (mm) Wheel tread approach to center of hook	端梁轮距 W (mm) End carriage wheelbase	端梁总长 B (mm) Total length of end carriage	吊钩左极限 C1 (mm) Hook approach to limit position on the left	吊钩右极限 C2 (mm) Hook approach to limit position on the right
5	7.5	2.22	28.7	4.6	580	1460	1500	2000	842	1310
	8	2.28	29.1	4.7						
	8.5	2.35	29.4	4.9						
	9	2.41	29.7	5						
	9.5	2.48	30	5.2						
	10	2.54	30.3	5.3						
	10.5	2.61	30.6	5.5						
	11	2.67	30.8	5.6						
	11.5	2.86	31.4	6.1	660	1460	2000	2500	842	1310
	12	2.93	31.6	6.3						
	12.5	3	31.9	6.4						
	13	3.07	32.1	6.6						
	13.5	3.14	32.4	6.8						
	14	3.21	32.6	6.9						
	14.5	3.43	33.2	7.5						
	15	3.5	33.5	7.7						
	15.5	3.58	33.7	7.9	725	1475	2000	2500	842	1310
	16	3.65	33.9	8			2500	3000		
	16.5	3.72	34.2	8.2						
	17	3.79	34.4	8.4						
	17.5	4.44	36	10	835	1465	2500	3000	842	1310
	18	4.52	36.3	10.2						
	18.5	4.61	36.5	10.4						
	19	4.69	36.8	10.6						
	19.5	4.79	37	10.8						
	20	5.09	37.8	11.6						
	20.5	5.19	38.1	11.8	880	1500	3000	3500	842	1310
	21	5.27	38.3	12						
21.5	5.37	38.6	12.3							
22	5.45	38.8	12.5							
22.5	5.55	39.1	12.7							
23	6.27	40.9	14.6	940						
23.5	6.39	41.2	14.8							
24	6.48	41.5	15.1							
24.5	6.59	41.8	15.3							
25	6.69	42	15.6							
25.5	6.8	42.3	15.9							
26	8.36	46.2	19.7	1020	1520	4000	4500	842	1310	
26.5	8.49	46.6	20.1							
27	8.61	46.9	20.4							
27.5	8.74	47.3	20.7							
28	8.86	47.6	21							
28.5	8.99	47.9	21.3							

起重量 Lifting capacity	跨度 Span	起重机总重 Crane total weight	最大轮压 Max. wheel load	最小轮压 Min. wheel load	基本尺寸 (mm) Basic dimensions					
					踏面至主梁顶 H1 (mm) Wheel tread approach to top	踏面至吊钩中 心 H2 (mm) Wheel tread approach to center of hook	端梁轮距 W (mm) End carriage wheelbase	端梁总长 B (mm) Total length of end carriage	吊钩左极限 C1 (mm) Hook approach to limit position on the left	吊钩右极限 C2 (mm) Hook approach to limit position on the right
10	7.5	3.06	50.8	5.9	735	1815	1500	2000	1293	1893
	8	3.13	51.6	6						
	8.5	3.21	52.3	6.1						
	9	3.28	53	6.3						
	9.5	3.36	53.6	6.4						
	10	3.43	54.2	6.5						
	10.5	3.51	54.7	6.7						
	11	3.58	55.2	6.9						
	11.5	3.95	56.4	7.8	835	1815	2000	2500	1293	1893
	12	4.03	56.9	7.9						
	12.5	4.12	57.3	8.1						
	13	4.21	57.8	8.3						
	13.5	4.3	58.2	8.5						
	14	4.38	58.6	8.7						
	14.5	4.64	59.4	9.4						
	15	4.72	59.8	9.5						
	15.5	4.82	60.2	9.8	890	1840	2000	2500	1293	1893
	16	4.91	60.5	10			2500	3000		
	16.5	5	60.9	10.2						
	17	5.09	61.2	10.4						
	17.5	5.59	62.5	11.8	880	1950	2500	3000	1293	1893
	18	5.69	62.9	12						
	18.5	5.8	63.3	12.3						
	19	5.89	63.6	12.5						
	19.5	6.01	64	12.8						
	20	6.83	66.1	14.8						
	20.5	6.94	66.5	15.1	920	1970	3000	3500	1293	1893
	21	7.05	66.9	15.3						
21.5	7.18	67.3	15.7							
22	7.29	67.6	15.9							
22.5	7.42	68	16.2							
23	8.55	71.9	20.1	1065						
23.5	8.67	72.4	20.5							
24	8.8	72.8	20.8							
24.5	8.97	73.3	21.2							
25	9.09	73.6	21.5							
25.5	9.22	74.1	21.9							
26	13.03	82.5	30.2	1160	1890	4000	4700	1293	1893	
26.5	13.23	83	30.7							
27	13.4	83.5	31.2							
27.5	13.6	84.1	31.7							
28	13.8	84.6	32.1							
28.5	14	85.1	32.6							

LD型电动单梁起重机

LD Model Electric Single Girder Crane

起重量 Lifting capacity t	跨度 Span S(m)	起重机总重 Crane total weight G (t) Ground controlling	最大轮压 Max. wheel load Rmax (kN)	最小轮压 Min. wheel load Rmin (kN)	基本尺寸 (mm) Basic dimensions											
					踏面至主梁顶 H1 (mm) Wheel tread approach to top	踏面至吊钩中心 H2 (mm) Wheel tread approach to center of hook	端梁轮距 W (mm) End carr	端梁总长 B (mm) Total length of end carriage	吊钩左极限 C1 (mm) Hook approach to limit position on the left	吊钩右极限 C2 (mm) Hook approach to limit position on the right						
16	7.5	3.39	76.5	6.6	835	2445	1500	2000	1293	1893						
	8	3.47	77.7	6.8												
	8.5	3.57	78.7	7												
	9	3.66	79.7	7.1												
	9.5	3.75	80.6	7.3												
	10	3.84	81.4	7.5												
	10.5	3.94	82.1	7.7												
	11	4.03	82.8	7.9												
	11.5	4.42	84.3	8.9	890	2470	2000	2500	1293	1893						
	12	4.52	84.9	9.1												
	12.5	4.63	85.6	9.4												
	13	4.73	86.1	9.6												
	13.5	4.84	86.7	9.8												
	14	4.94	87.3	10.1												
	14.5	5.76	89.6	12.1							980	2520	2000	2500	1293	1893
	15	5.88	90.2	12.4												
	15.5	6.01	90.7	12.7												
	16	6.13	91.2	13												
	16.5	6.26	91.8	13.3	2500	3000										
	17	6.37	92.3	13.5												
	17.5	7.35	94.9	16												
	18	7.48	95.4	16.3												
	18.5	7.64	96	16.7	1065	2495	2500	3000	1293	1893						
	19	7.77	96.4	17												
	19.5	7.94	97	17.4												
	20	8.43	98.4	18.6							1135	2545	3000	3500	1293	1893
	20.5	8.59	98.9	19												
	21	8.74	99.4	19.4												
21.5	8.9	99.9	19.8													
22	9.04	100.4	20.1													
22.5	9.21	100.9	20.5													
23	12.17	108.4	27.9	1200	2590	3500	4200	1293	1893							
23.5	12.38	109.1	28.5													
24	12.56	109.6	28.9													
24.5	12.77	110.3	29.4													
25	12.96	110.8	29.9													
25.5	13.17	111.4	30.4													
26	14.26	114.2	33.1							1300	2600	4000	4700	1293	1893	
26.5	14.48	114.9	33.7													
27	14.67	115.4	34.1													
27.5	14.9	116.1	34.7													
28	15.1	116.6	35.2													
28.5	15.3	117.2	35.7													

LD型电动单梁起重机

LD Model Electric Single Girder Crane

起重量 Lifting capacity t	跨度 Span S(m)	起重机总重 Crane total weight G (t) Ground controlling	最大轮压 Max. wheel load Rmax (kN)	最小轮压 Min. wheel load Rmin (kN)	基本尺寸 (mm) Basic dimensions											
					踏面至主梁顶 H1 (mm) Wheel tread approach to top	踏面至吊钩中心 H2 (mm) Wheel tread approach to center of hook	端梁轮距 W (mm) End carriage wheelbase	端梁总长 B (mm) Total length of end carriage	吊钩左极限 C1 (mm) Hook approach to limit position on the left	吊钩右极限 C2 (mm) Hook approach to limit position on the right						
20	7.5	5.27	99	10.2	900	2400	2000	2700	1394	1933						
	8	5.38	100.4	10.4												
	8.5	5.52	101.8	10.6												
	9	5.64	103	10.8												
	9.5	5.77	104.2	11.1												
	10	5.89	105.2	11.3												
	10.5	6.02	106.2	11.6												
	11	6.14	107.1	11.8												
	11.5	6.71	109.1	13.2	970	2430	2000	2700	1394	1933						
	12	6.84	109.9	13.5												
	12.5	6.99	110.8	13.8												
	13	7.12	111.5	14.1												
	13.5	7.27	112.3	14.5												
	14	7.4	113	14.8												
	14.5	8.55	116.3	17.6							1050	2490	2000	2700	1394	1933
	15	8.71	117	18												
	15.5	8.9	117.7	18.4												
	16	9.05	118.4	18.8												
	16.5	9.24	119.2	19.2	2500	3200										
	17	9.4	119.8	19.6												
	17.5	10.11	121.8	21.4												
	18	10.28	122.5	21.8												
	18.5	10.48	123.2	22.3	1130	2550	2500	3200	1394	1933						
	19	10.66	123.8	22.7												
	19.5	10.85	124.5	23.2												
	20	11.62	126.6	25.1							1200	2590	3000	3700	1394	1933
	20.5	11.84	127.3	25.6												
	21	12	127.9	26												
21.5	12.2	128.6	26.5													
22	12.4	129.2	27													
22.5	12.6	129.9	27.5													
23	13.6	132.5	30													
23.5	13.8	133.2	30.6	1300	2600	3500	4200	1394	1933							
24	140.5	133.8	31													
24.5	142.8	134.5	31.6													
25	144.7	135.1	32.1													
25.5	146.9	135.8	32.6													

- 注: 1. 司机室操作时起重机总重增加0.5t, 最大、最小轮压均增加2kN。
 2. 如有其他要求, 请在订货时特别提出。
 3. 我公司保留在无需任何通知的情况下对以上信息进行变更的权力。

Note: 1.Total weight should increase 0.5t, the minimum and maximum wheel pressure each increase 2KN if cab operation.
 2.Other requirements please put forward when you place an order.
 3.We reserve the right to change above information without any notice.

LDP型电动单梁起重机

LDP Model Electric Single Girder Crane

产品概述:

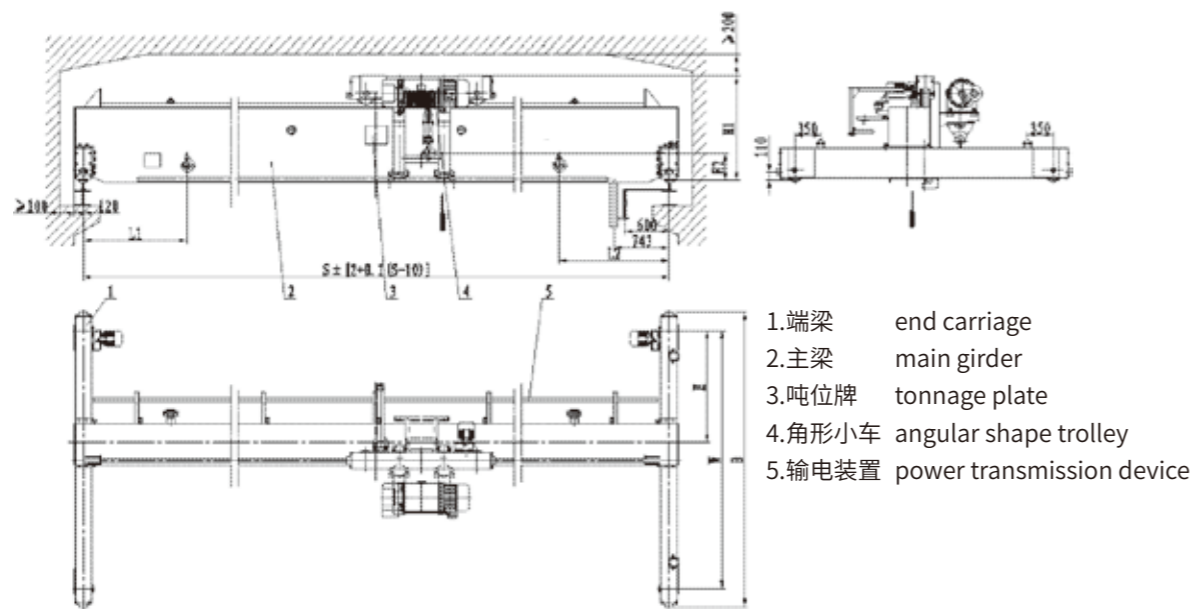
LDP型电动单梁起重机属于超低净空轻小型起重机, 电动葫芦位于主梁一侧, 增加了吊钩的服务空间, 可以降低厂房高度和造价。该产品因具有小车轮距大, 运行平稳, 结构紧凑、刚性好、操作灵敏、噪音低、安全可靠、造型美观等优点, 广泛应用于工作环境温度在-25°C~+40°C, 车间厂房净空高度又较低的场所。

LDP型电动单梁起重机是按GB/T 3811-2008、JB/T 1306-2008标准设计制造的, 与CD₁、MD₁电动葫芦配套使用的轻型起重设备。其额定载荷3t-10t, 跨度7.5m~22.5m, 工作级别A3、A4, 起升高度6-12m, 操作方式主要是地面操纵方式(地操、遥控操作、地+遥操作)。如果有跨度和起升高度超出样本中所列的范围, 我们还可以根据用户需求进行非标设计。

Product Introduction:

LDP model electric single beam crane belongs to very low clearance light duty lifting equipment. Electric hoist is at one side of main girder, so can increase service space of hook and reduce the cost. With advantages of big trolley tread, smooth traveling, tight structure, strong rigidity, delicate operation, low noise, safety and reliability and beautiful exterior, it is widely used in the situation that clearance height of workshop is low and the operating ambient temperature is -25°C~+40°C.

LDP model motor-driven single beam crane is designed and produced according to GB/T 3811-2008、JB/T 1306-2008 standard and used with model CD₁、MD₁. It is a light duty crane with rated load of 3 to 10 tons. The span is 7.5m~22.5m. Working grade is A3-A4 and lifting height is 6~12m. The main operating method is ground control (ground control, remote control, ground control + remote control). If the span and lifting height is out of the range that stylebook lists, we can do non-standard design according to user requirement.



LDP型电动单梁起重机

LDP Model Electric Single Girder Crane

起重机运行机构 Crane traveling Mechanism	运行速度 m/min travelling speed	20	30	
	速比 Speed ratio	58.95	29.42	
	电动机 motor	型号 model	实心转子软启动电机 cone squirrel-cage	
		功率 (kw) power	0.8X2、1.5X2	
转速 r/min rotational speed		1500		
起升机构 (电动葫芦及运行机构) Lifting Mechanism (electric hoist) traveling Mechanism	电动葫芦形式 model of electric hoist	CD ₁ 型 (MD ₁ 型) model		
	起升速度 m/min lifting speed	8 (0.8/8)、7 (0.7/7)		
	起升高度 m lifting height	6、9、12		
	运动速度 m/min	20、30		
	运行电机 motor	实心转子软启动电机 cone squirrel-cage model		
工作制度 Working system		中级 intermediate Jc=25%		
电源 Electric current		380V 50Hz		
车轮直径 Wheel diameter		Φ270		
轨道面宽 Width of trail		37~70		

吨位 (t) capacity	跨度 (m) S Span	整车 总重 G(t) total weight 地面操作 ground control	最大 轮压 Rmin (kN) max. wheel load	最小 轮压 Rmin(kN) min.wheel load	路面至 最高点 (mm) H1wheel tread approach to top	路面至 钩中心 H2(mm) wheel tread approach to center of hook	端梁 总长 B(mm) Total length of end carriage	端梁 总长 B(mm) Total length of end carriage	主梁与车轮 轴偏心距离 E(mm) Eeccentric distance between main girder and wheel shaft	吊钩左极限 L1(mm) Hook approach to limit position on the left	吊钩右极限 L2(mm) Hook approach to limit position on the right
3	7.5	2.705	20.1	5.39	1065	-130	2500	3000	965	1413	1496
	8	2.767	20.48	5.51							
	8.5	2.845	20.87	5.68							
	9	2.907	21.2	5.81							
	9.5	2.969	21.51	5.94							
	10	3.03	21.8	6.08							
	10.5	3.108	22.12	6.25	1130	-65	2500	3000	1000	1413	1496
	11	3.172	22.4	6.4							
	11.5	3.519	23.38	7.24							
	12	3.591	26.65	7.4							
	12.5	3.686	23.98	7.63							
	13	3.759	24.25	7.8							
	13.5	3.835	24.51	7.98							
	14	3.907	24.76	8.15							
	14.5	4.278	25.51	8.81							
15	4.357	25.76	8.99	1180	-15	3000	3500	1280	1413	1496	
15.5	4.437	26.02	9.19								

LDP型电动单梁起重机

LDP Model Electric Single Girder Crane

吨位 (t) capacity	跨度 (m) S Span	整车 总重 G(t) total weight 地面操作 ground control	最大 轮压 Rmin (kN) max. wheel load	最小轮压 Rmin(kN) min.wheel load	踏面至 最高点 (mm) H1 wheel tread approach to top	踏面至 钩中心 H2(mm) wheel tread approach to center of hook	端梁 总长 B(mm) Total length of end carriage	主梁与车轮 轴偏心距离 E(mm) Eeccentric distance between main girder and wheel shaft	吊钩左极限 L1(mm) Hook approach to limit position on the left	吊钩右极限 L2(mm) Hook approch to limitposition on the right	
3	16	4.513	26.27	9.37	1230	35	3500	4000	1545		
	16.5	4.612	26.56	9.61							
	17	4.689	26.8	9.79							
	17.5	5.006	28.05	10.98							
	18	5.145	28.29	11.17							
	18.5	5.255	28.61	11.44							
	19	5.337	28.85	11.64							
	19.5	5.422	29.02	11.84							
	20	6.312	31.37	14.05	1300	105	2500	3000	1570		
	20.5	6.441	31.72	14.37							
	21	6.543	32.01	14.62							
	21.5	6.642	32.09	14.87							
22	7.747	32.58	15.13								
22.5	6.877	32.93	15.45								
5	7.5	3.175	29.7	6.24	1170	-175	2500	3000	920	1405	1496
	8	3.253	30.24	6.4							
	8.5	3.355	30.81	6.62							
	9	3.436	31.28	6.79							
	9.5	3.515	31.72	6.96							
	10	3.596	32.14	7.14							
	10.5	3.698	32.6	7.37							
	11	3.779	32.98	7.55							
	11.5	4	33.7	8.08	1255	-90	3000	3500	1230		
	12	4.084	34.06	8.27							
	12.5	4.195	34.48	8.53							
	13	4.278	34.82	8.73							
	13.5	4.366	35.15	8.93							
	14	4.452	35.48	9.14							
	14.5	4.896	36.47	10	1280	-65	3000	3500	1230		
	15	4.988	36.79	10.21							
	15.5	5.082	37.11	10.44							
	16	5.169	37.42	10.65							
	16.5	5.285	37.79	10.93							
	17	5.38	38.1	11.16							
17.5	6.066	40.13	13.09								
18	6.167	40.45	13.33								
18.5	6.306	40.86	13.67	1360	15			1500			
19	6.408	41.17	13.92								
19.5	6.514	41.49	14.18								

LDP型电动单梁起重机

LDP Model Electric Single Girder Crane

吨位 (t) capacity	跨度 (m) S Span	整车 总重 G(t) total weight 地面操作 ground control	最大 轮压 Rmin (kN) max. wheel load	最小轮压 Rmin(kN) min.wheel load	踏面至 最高点 (mm) H1 wheel tread approach to top	踏面至 钩中心 H2(mm) wheel tread approach to center of hook	端梁 总长 B(mm) Total length of end carriage	主梁与车轮 轴偏心距离 E(mm) Eeccentric distance between main girder and wheel shaft	吊钩左极限 L1(mm) Hook approach to limit position on the left	吊钩右极限 L2(mm) Hook approch to limitposition on the right	
5	20	6.889	42.49	15.1	1410	65	3500	4000	1525		
	20.5	7.032	42.9	15.45							
	21	7.142	43.23	15.72							
	21.5	7.251	43.55	15.99							
	22	7.363	43.87	16.26							
	22.5	7.507	44.27	16.62							
	10	7.5	4.047	49.78							7.33
8		4.141	50.9	7.51							
8.5		4.236	51.92	7.69							
9		4.349	52.89	7.92							
9.5		4.441	53.74	8.11							
10		4.535	54.54	8.3							
10.5		4.649	55.32	8.55							
11		4.737	56.01	8.74							
11.5		5.378	57.88	10.12							
12		5.491	58.55	10.38							
12.5		5.636	59.25	10.71							
13		5.751	59.86	10.96	1195	-315			860		
13.5		5.867	60.45	11.22							
14		5.98	61	11.48							
14.5		6.542	62.64	12.79							
15		6.667	63.19	13.07							
15.5		6.79	63.71	13.35							
16		6.914	64.23	13.64	1305	-205	3000	3500	1135		
16.5		7.077	64.83	14.03							
17		7.2	65.31	14.31							
17.5		7.741	66.83	15.59							
18		7.871	67.31	15.89							
18.5	8.006	67.79	16.21								
19	8.178	68.37	16.62								
19.5	8.312	68.83	16.93	1385	-125			1400			
20	8.98	70.61	18.53								
20.5	9.121	71.09	18.86								
21	9.321	71.7	19.34								
21.5	9.46	72.15	19.67								
22	9.602	72.6	20								
22.5	9.804	73.2	20.49	1475	-35	3500	4000	1420			

注: 1.踏面至吊钩中心H2, 若为负值, 则吊钩在轮踏面之下; 若为正值, 则吊钩在轮踏面之上。

2.我公司保留在无需任何通知的情况下对以上信息进行变更的权力。

Note: 1. If distance between wheel tread and center of hook H2 is a negative value, the hook is below the wheel tread, or the hook is above the wheel tread.

2. We reserve the right to change above information without any notice.

HD型电动单梁起重机

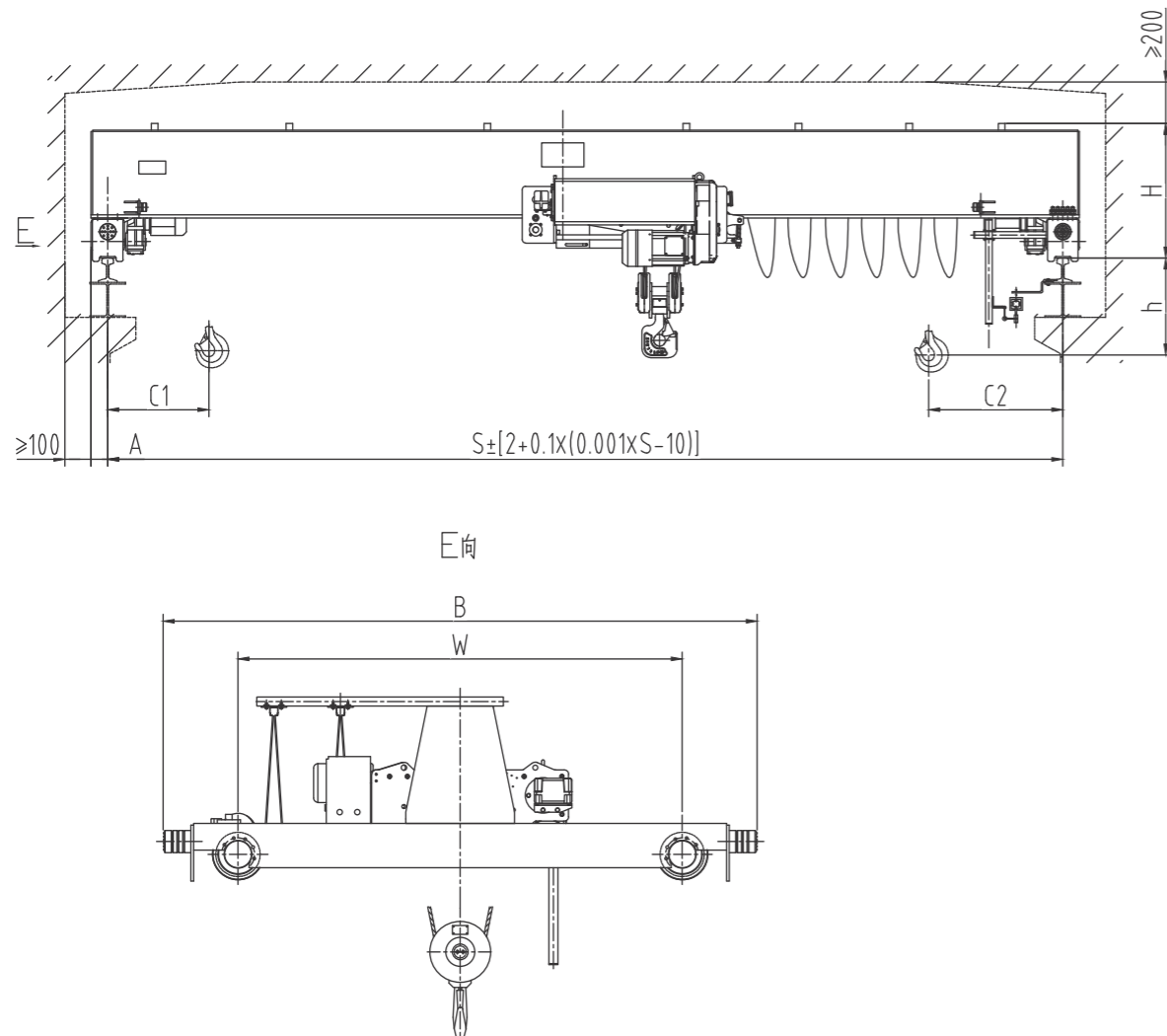
HD Model Electric Single Girder Crane

产品概述:

- 1、HD欧式电动单梁自重轻、轮压小、限界尺寸小、性能可靠、操作方便。
- 2、轮压小、限界尺寸小即可降低厂房前期工程投资,低噪音、低能耗,节能环保。
- 3、经久耐用,降低维修、维护费用。

Product Introduction:

1. HD European type electric single-girder crane with light dead weight, small wheel pressure and reliable performance is easy to operate.
2. Small wheel pressure and margin can cut down earlier stage project investment of workshop , low noise, low energy consumption, energy conservation and environmental protection.
3. Wear well can lower maintenance and maintenance costs.



HD型电动单梁起重机

HD Model Electric Single Girder Crane

起重量 Capacity (t)	跨度 Span (m)	起升 高度Lift- ing height (m)	工作 级别 Working class	起升 速度Lift- ing speed (m/min)	质量Weight		大车 轨道 Track (推荐)	总功率 power rate (kW)	最大 轮压 Max wheel load (kN)	基本尺寸Dimension (mm)											
					小车 (kg)	整机 (kg)				H	h	C1	C2	A	W	B					
1	7.5	6 9 12	A5	0.8/5	405	1700	P24	4.07	8.76	354	665	940	100	2000	2674						
	1932					9.51			618												
	2280					10.45			698												
	2704					11.58			768												
	3299					13.06			798												
	3921					14.62			858												
4514	16.1	928	4.31	858	940	100	2500	3174													
2	7.5	6 9 12	A5	0.8/5	405	1811	P24	4.31	13.5	356	665	940	100	2000	2674						
	2081					14.46			708												
	2451					15.54			778												
	3188					17.47			818												
	3773					18.93			888												
	4344					20.39			968							4.67	968	940	100	2500	3174
5141	22.38	988	4.67	988	940	100	3000	3674													
3.2	7.5	6 9 12	A5	0.8/5	405	1861	P24	4.31	18.96	356	665	940	100	2000	2674						
	2098					20.11			758												
	2687					21.85			808												
	3344					23.51			908												
	4121					25.45			948												
	4745					27.06			1028							4.67	1028	940	100	2500	3174
6164	30.6	1178	4.67	1178	940	100	3000	3674													
5	7.5	6 9 12	A5	0.8/5	500	2218	P24	7.75	28.2	410	665	940	100	2000	2674						
	2571					29.76			788												
	3245					31.8			908												
	3978					33.84			978												
	4633					35.62			1138												
	6280					39.78			1258							8.15	1258	940	100	2500	3174
7201	42.62	1288	8.15	1288	940	100	3000	3674													
10	7.5	6 9 12	A5	0.8/5	640	2696	P38	12.1	51.85	465	675	1020	100	2000	2674						
	3200					54.44			908												
	4091					57.7			1008												
	5307					60.83			1208												
	6466					64			1308												
	7694					67.26			1358							12.8	1358	940	100	2500	3174
9309	71.36	1482	12.8	1482	940	100	3000	3674													
12.5	7.5	6 9 12	A5	0.66/4	740	3545	P38	12.8	65.8	345	695	1050	120	2000	2674						
	4201					69.13			1025												
	5285					72.74			1008												
	7120					77.76			1208												
	8359					81.24			1308							13.6	1308	940	120	2500	3174
	9905					85.35			1358							13.6	1358	940	120	3000	3674
12086	90.94	1482	13.6	1482	940	120	3500	4174													

LX型电动单梁悬挂起重机

LX Model Single Beam Suspension Crane

产品概述:

LX型电动悬挂起重机与CD₁、MD₁型电动葫芦配套使用,成为一种有轨运行的轻小型起重机。用于机械、装配及仓库等场所。本产品为地面操作。工作环境温度-20°C~40°C,禁止在易燃、易爆及腐蚀性强的介质环境中工作。

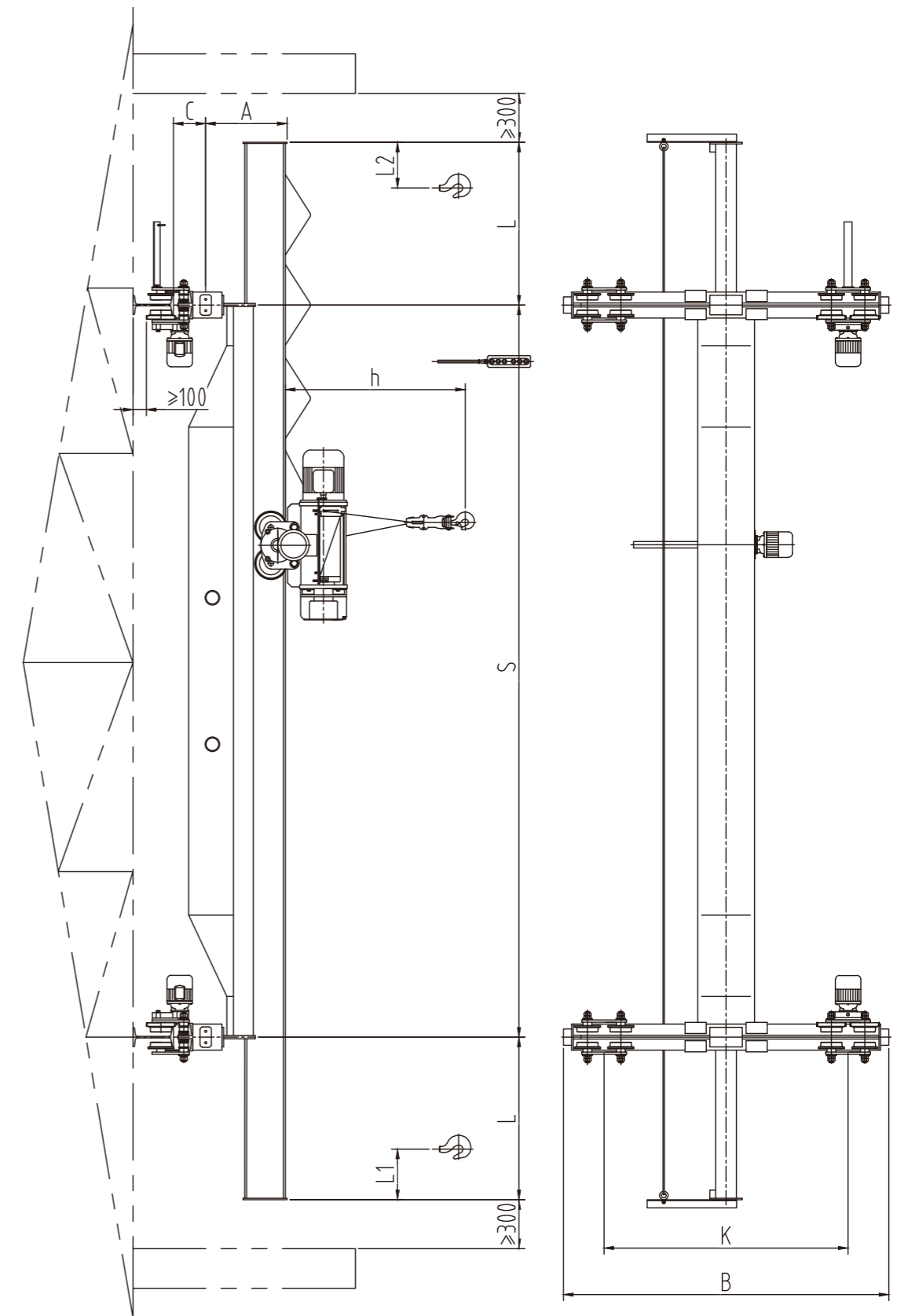
Product Introduction:

LX model single Beam Suspension motor crane and CD₁、MD₁ model electric hoist are used together as a complete set . It is a light duty track traveling crane with trajectory which applies to and used at machinery assembling sites and warehouses. this product adopt s ground controlling and works at a temperature of-20°C to 40°C. It is prohibited to use the equipment at combustible , explosive or corrosive environment.

起升重量 lifting capacity		0.5, 1, 2, 3, 5, 10	
跨度 span (m)		3-22.5	
起重机运行机构 Crane travelling mechanism	运行速度 traveling speed		20 m/min
	电动机 motor	0.5-3t	3-22.5m
		5t	3-16m
		5t	16-22.5m
10t	3-22.5m		
起升机构 Lifting mechanism	类型 model		CD/MD ₁
	电动葫芦 Electric hoist	起升速度 lifting speed	0.5-3t 8.0/8 10t 7.0/7
		起升高度 lifting height (m)	6.9, 12, 18, 24, 30
	运行机构 travelling mechanism	运行速度 traveling speed	20/30 m/min
		电动机 motor	锥形转子电机 Taper type Motor
工作制度 working system		中级 intermediate Fe=25%	
电源 power		三相交流 three-phase AC380V 50Hz	
吨位, 跨度	车轮直径	适应轨道面	
0.5-3t, 3-22.5m; 5t, 3-16m	φ134	120a-132c	
5t, 16-22.5m; 10t, 3-16m	φ134	132b-145c	
10t, 16-22.5m	φ134	140b-162c	

LX型电动单梁悬挂起重机

LX Model Single Beam Suspension Crane



LX型电动单梁悬挂起重机

LX Model Single Beam Suspension Crane

		0.5t																			
起重量 Rated load																					
跨度 (m) Span		3	3.5	4	4.5	5	5.5	6	6.5	7	7.5	8	8.5	9	9.5	10	10.5	11	11.5	12	12.5
起重量 Total weight		1019	1060	1103	1144	1187	1228	1271	1312	1355	1396	1439	1483	1524	1563	1608	1708	1752	1792	1832	1876
最大轮压(kN) Max wheel load		6.26	6.28	6.33	6.38	6.45	6.52	6.61	6.69	6.78	6.86	6.95	7.19	7.29	7.38	7.48	7.58	7.68	7.77	7.86	7.97
最小轮压(kN) Min wheel load		2.55	2.65	2.76	2.86	2.97	3.07	3.18	3.28	3.39	3.49	3.60	3.85	3.96	4.06	4.17	4.27	4.38	4.48	4.58	4.69
h(mm)		起升高度不大于9米时, h=890mm; 起升高度大于9米时h=947mm; When lifting height is less than 9m, h=890mm; When lifting height is more than 9m, h=947mm;																			
A(mm)		435																			
C(mm)		~208																			
L1(mm)		370																			
L2(mm)		223																			
B(mm)		1500																			
K(mm)		1000																			
L(mm)		750																			
起重量 Rated load		0.5t																			
跨度 (m) Span		13	13.5	14	14.5	15	15.5	16	16.5	17	17.5	18	18.5	19	19.5	20	20.5	21	21.5	22	22.5
起重量 Total weight		1916	1960	2000	2084	2124	2168	2208	2252	2292	2336	2376	2420	2460	2504	2745	2783	2829	2885	2929	2976
最大轮压(kN) Max wheel load		8.06	8.17	8.26	8.47	8.57	8.67	8.77	8.87	8.97	9.08	9.18	9.28	9.38	9.49	10.09	10.21	10.31	10.43	10.54	10.66
最小轮压(kN) Min wheel load		4.79	4.90	5.00	5.21	5.31	5.42	5.52	5.63	5.73	5.84	5.94	6.05	6.15	6.26	6.86	6.98	7.09	7.21	7.32	7.44
h(mm)		起升高度不大于9米时, h=890mm; 起升高度大于9米时h=947mm; When lifting height is less than 9m, h=890mm; When lifting height is more than 9m, h=947mm;																			
A(mm)		435																			
C(mm)		~208																			
L1(mm)		370																			
L2(mm)		223																			
B(mm)		2500																			
K(mm)		2000																			
L(mm)		1000																			

LX型电动单梁悬挂起重机

LX Model Single Beam Suspension Crane

		1t																			
起重量 Rated load																					
跨度 (m) Span		3	3.5	4	4.5	5	5.5	6	6.5	7	7.5	8	8.5	9	9.5	10	10.5	11	11.5	12	12.5
起重量 Total weight		1034	1075	1118	1159	1202	1243	1286	1327	1370	1411	1454	1555	1598	1639	1683	1723	1767	1807	1847	1891
最大轮压(kN) Max wheel load		9.57	9.52	9.52	9.53	9.57	9.61	9.67	9.74	9.81	9.88	9.96	10.19	10.28	10.36	10.46	10.54	10.64	10.73	10.82	10.91
最小轮压(kN) Min wheel load		2.58	2.69	2.89	2.90	3.01	3.11	3.22	3.32	3.43	3.53	3.64	3.89	4.00	4.10	4.21	4.31	4.42	4.52	4.62	4.73
h(mm)		起升高度不大于9米时, h=847mm; 起升高度大于9米时h=947mm; When lifting height is less than 9m, h=847mm; When lifting height is more than 9m, h=947mm;																			
A(mm)		435																			
C(mm)		~208																			
L1(mm)		310																			
L2(mm)		130																			
B(mm)		1500																			
K(mm)		1000																			
L(mm)		750																			
起重量 Rated load		1t																			
跨度 (m) Span		13	13.5	14	14.5	15	15.5	16	16.5	17	17.5	18	18.5	19	19.5	20	20.5	21	21.5	22	22.5
起重量 Total weight		1931	1975	2015	2217	2261	2309	2353	2401	2445	2488	2633	2680	2732	2779	2831	3111	3167	3219	3275	3333
最大轮压(kN) Max wheel load		11.01	11.10	11.20	11.70	11.80	11.91	12.01	12.13	12.23	12.70	12.81	12.83	13.05	13.17	13.87	14.01	14.13	14.27	14.40	14.53
最小轮压(kN) Min wheel load		4.83	4.94	5.04	5.54	5.65	5.77	5.88	6.00	6.11	6.58	6.70	6.83	6.95	7.08	7.78	7.92	8.05	8.19	8.32	8.46
h(mm)		起升高度不大于9米时, h=847mm; 起升高度大于9米时h=947mm; When lifting height is less than 9m, h=847mm; When lifting height is more than 9m, h=947mm;																			
A(mm)		435																			
C(mm)		~208																			
L1(mm)		310																			
L2(mm)		130																			
B(mm)		2500																			
K(mm)		2000																			
L(mm)		1000																			

LX型电动单梁悬挂起重机

LX Model Single Beam Suspension Crane

2t																				
起重量 Rated load																				
跨度 (m) Span	3	3.5	4	4.5	5	5.5	6	6.5	7	7.5	8	8.5	9	9.5	10	10.5	11	11.5	12	12.5
起重量总重 (kg) Total weight	1121	1102	1205	1246	1289	1330	1373	1414	1457	1498	1541	1642	1685	1726	1770	1810	1854	2085	2133	2184
最大轮压(kN) Max wheel load	16.54	16.35	16.24	16.17	16.15	16.14	16.15	16.17	16.22	16.26	16.32	16.52	16.59	16.66	16.73	16.81	16.89	17.44	17.54	17.65
最小轮压(kN) Min wheel load	2.08	2.9	3.01	3.11	3.22	3.32	3.43	3.53	3.64	3.74	3.85	4.11	4.21	4.32	4.42	4.53	4.63	5.21	5.33	5.46
h(mm)	起升高度不大于9米时, h=1020mm; 起升高度大于9米时h=1130mm; When lifting height is less than 9m, h=1020mm; When lifting height is more than 9m, h=1130mm;																			
A(mm)	480																			
C(mm)	~208																			
L1(mm)	290																			
L2(mm)	170																			
B(mm)	1500																			
K(mm)	1000																			
L(mm)	750																			
起重量														1000						
起重量 Rated load																				
跨度 (m) Span	13	13.5	14	14.5	15	15.5	16	16.5	17	17.5	18	18.5	19	19.5	20	20.5	21	21.5	22	22.5
起重量总重 (kg) Total weight	2232	2283	2331	2387	2439	2475	2527	2583	2635	2689	2745	2803	2862	2923	2985	3050	3111	3277	3357	3403
最大轮压(kN) Max wheel load	17.75	17.86	17.96	18.54	18.85	18.78	18.90	19.03	19.14	19.72	19.85	19.99	20.12	20.27	20.97	21.12	21.27	21.42	21.57	21.73
最小轮压(kN) Min wheel load	5.58	5.71	5.83	6.42	6.55	6.69	6.82	6.96	7.09	7.67	7.81	7.97	8.11	8.26	8.96	9.13	9.28	9.44	9.59	9.76
h(mm)	起升高度不大于9米时, h=1020mm; 起升高度大于9米时h=1130mm; When lifting height is less than 9m, h=1020mm; When lifting height is more than 9m, h=1130mm;																			
A(mm)	480																			
C(mm)	555																			
L1(mm)	~208																			
L2(mm)	290																			
L2(mm)	170																			
B(mm)	2500																			
K(mm)	2000																			
L(mm)	1000																			

LX型电动单梁悬挂起重机

LX Model Single Beam Suspension Crane

3t																				
起重量 Rated load																				
跨度 (m) Span	3	3.5	4	4.5	5	5.5	6	6.5	7	7.5	8	8.5	9	9.5	10	10.5	11	11.5	12	12.5
起重量总重 (kg) Total weight	1245	1292	1342	1389	1439	1486	1536	1583	1633	1680	1730	1840	1890	1937	1987	2034	2084	2271	2323	2379
最大轮压(kN) Max wheel load	25.54	25.22	25.02	25.89	26.81	26.75	27.75	28.75	29.78	30.81	32.86	33.07	33.90	34.20	35.28	35.35	35.44	35.87	36.96	37.07
最小轮压(kN) Min wheel load	3.11	3.23	3.35	3.47	3.60	3.71	3.84	3.96	4.08	4.20	4.33	4.40	4.72	4.84	4.96	5.08	5.14	5.81	5.95	6.05
h(mm)	起升高度不大于9米时, h=1134mm; 起升高度大于9米时h=1240mm; When lifting height is less than 9m, h=1134mm; When lifting height is more than 9m, h=1240mm;																			
A(mm)	455																			
C(mm)	~208																			
L1(mm)	290																			
L2(mm)	170																			
B(mm)	1500																			
K(mm)	1000																			
L(mm)	750																			
起重量																				
起重量 Rated load																				
跨度 (m) Span	13	13.5	14	14.5	15	15.5	16	16.5	17	17.5	18	18.5	19	19.5	20	20.5	21	21.5	22	22.5
起重量总重 (kg) Total weight	2431	2487	2539	2584	2640	2692	2758	2809	2875	2940	3005	3075	3147	3223	3304	3385	3467	3654	3737	3828
最大轮压(kN) Max wheel load	24.18	24.29	24.40	24.99	25.11	25.24	25.36	25.50	25.62	26.17	26.31	26.46	26.59	26.75	27.11	27.26	27.42	27.56	27.73	27.87
最小轮压(kN) Min wheel load	6.08	6.22	6.35	6.96	7.10	7.25	7.40	7.55	7.69	8.25	8.40	8.57	8.72	8.88	9.26	9.41	9.59	9.74	9.92	10.07
h(mm)	起升高度不大于9米时, h=1134mm; 起升高度大于9米时h=1240mm; When lifting height is less than 9m, h=1134mm; When lifting height is more than 9m, h=1240mm;																			
A(mm)	585																			
C(mm)	~208																			
L1(mm)	290																			
L2(mm)	170																			
B(mm)	2500																			
K(mm)	2000																			
L(mm)	1000																			

LX型电动单梁悬挂起重机

LX Model Single Beam Suspension Crane

起重量 Rated load		5t																			
跨度 (m) Span		3	3.5	4	4.5	5	5.5	6	6.5	7	7.5	8	8.5	9	9.5	10	10.5	11	11.5	12	12.5
起重量 (kg) Total weight	1541	1541	1569	1661	1719	1780	1838	1900	1968	2019	2077	2139	2271	2333	2391	2462	2510	2572	2617	2683	2996
最大轮压 (kN) Max wheel load	37.91	37.33	36.95	36.67	36.49	36.36	36.28	36.23	36.22	36.22	36.22	36.25	37.18	37.20	37.22	37.26	37.30	37.37	37.90	37.98	38.20
最小轮压 (kN) Min wheel load	3.85	4.00	4.15	4.30	4.45	4.60	4.75	4.89	5.05	5.19	5.35	5.68	5.83	5.98	6.13	6.28	6.43	7.04	7.21	7.49	
h(mm)	起升高度不大于9米时, h=1320mm; 起升高度大于9米时h=1383mm; When lifting height is less than 9m, h=1320mm; When lifting height is more than 9m, h=1383mm;																				
A(mm)	485																				
C(mm)	~208																				
L1(mm)	380																				
L2(mm)	150																				
R(mm)	1500																				
K(mm)	1000																				
L(mm)	750																				
起重量 Rated load		5t																			
跨度 (m) Span	13	13.5	14	14.5	15	15.5	16	16.5	17	17.5	18	18.5	19	19.5	20	20.5	21	21.5	22	22.5	
起重量 (kg) Total weight	3062	3134	3201	3337	3603	3675	3751	3878	3947	4429	4520	4600	4680	4771	5056	5189	5283	5316	5410	5483	
最大轮压 (kN) Max wheel load	38.30	38.42	38.53	39.31	39.43	39.57	39.69	39.99	40.13	41.29	41.49	41.66	41.85	42.03	42.71	42.89	43.10	43.29	43.50	43.69	
最小轮压 (kN) Min wheel load	7.65	7.84	8.00	8.84	9.04	9.19	9.35	9.70	9.87	11.07	11.30	11.50	11.73	11.93	12.64	12.85	13.08	13.29	13.53	14.73	
h(mm)	起升高度不大于9米时, h=1320mm; 起升高度大于9米时h=1383mm; When lifting height is less than 9m, h=1320mm; When lifting height is more than 9m, h=1383mm;																				
A(mm)	500																				
C(mm)	~208																				
L1(mm)	380																				
L2(mm)	150																				
R(mm)	2500																				
K(mm)	2000																				
L(mm)	1000																				

LX型电动单梁悬挂起重机

LX Model Single Beam Suspension Crane

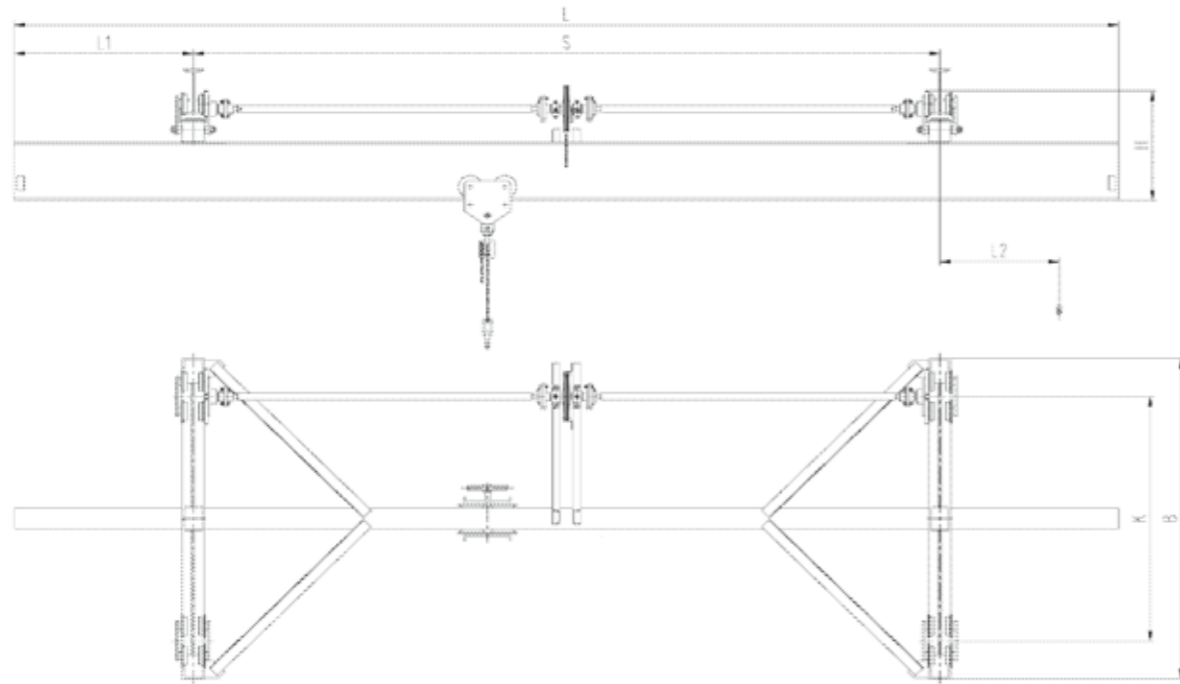
起重量 Rated load		10t																			
跨度 (m) Span		3	3.5	4	4.5	5	5.5	6	6.5	7	7.5	8	8.5	9	9.5	10	10.5	11	11.5	12	12.5
起重量 (kg) Total weight	2914	2972	2434	2492	2554	2612	2673	2731	2789	2851	2913	3189	3259	3336	3405	3482	3551	3888	3989	4170	
最大轮压 (kN) Max wheel load	63.94	64.08	64.24	64.38	64.54	64.68	64.84	64.98	64.14	65.28	65.44	69.85	69.82	69.84	69.85	69.90	69.95	70.94	70.66	71.01	
最小轮压 (kN) Min wheel load	5.79	5.93	6.08	6.23	6.38	6.53	6.68	6.83	6.98	7.13	7.28	8.12	8.29	8.45	8.66	8.86	9.03	9.75	9.97	10.43	
h(mm)	起升高度不大于9米时, h=1320mm; 起升高度大于9米时h=1383mm; When lifting height is less than 9m, h=1320mm; When lifting height is more than 9m, h=1383mm;																				
A(mm)	555																				
C(mm)	~240																				
L1(mm)	500																				
L2(mm)	500																				
R(mm)	1500																				
K(mm)	1000																				
L(mm)	750																				
起重量 Rated load		10t																			
跨度 (m) Span	13	13.5	14	14.5	15	15.5	16	16.5	17	17.5	18	18.5	19	19.5	20	20.5	21	21.5	22	22.5	
起重量 (kg) Total weight	4292	4342	4433	4581	4675	4758	4852	5161	5255	5753	5856	5945	6048	6136	6875	7080	7290	7396	7427	7582	
最大轮压 (kN) Max wheel load	71.14	71.26	71.40	71.70	71.87	72.01	72.18	72.90	73.08	74.27	74.48	74.66	74.87	75.05	77.10	77.33	77.60	77.83	78.10	78.33	
最小轮压 (kN) Min wheel load	10.65	10.86	11.08	11.45	11.69	11.89	12.13	12.90	13.14	14.38	14.64	14.86	15.12	15.34	17.45	17.70	18.00	18.2	18.57	18.83	
h(mm)	起升高度不大于9米时, h=1320mm; 起升高度大于9米时h=1383mm; When lifting height is less than 9m, h=1320mm; When lifting height is more than 9m, h=1383mm;																				
A(mm)	650																				
C(mm)	~240																				
L1(mm)	500																				
L2(mm)	500																				
R(mm)	2500																				
K(mm)	2000																				
L(mm)	1000																				

备注: L1, L2的尺寸均为h=6m的葫芦的左右极限尺寸, 其他起升高度的左右极限尺寸请咨询。

Remark: L1, L2 is left limit dimension and right limit dimension of electric hoist with lifting height 6m and consult technicians for left limit dimension and right limit dimension of other lifting height.

SLX型手动单梁悬挂起重机

SLX Model Manual Operational Single Beam Suspension Crane



起重量 (吨) Lifting capacity (t)	0.5				1				2				3				5			
	跨度 (米) Span(m)	3~5	6~8	9~10	11~12	3~5	6~8	9~10	11~12	3~5	6~8	9~10	11~12	3~5	6~8	9~10	11~12	3~5	6~8	9~10
起升高度 (米) Lifting height(m)	2.5~10				2.5~10				3~10				3~10				3~10			
轨道型号 Type of track	I25a~I32c																			
配套小车型号 Type of matched crab	SDX 0.5t				SDX 1t				SDX 2t				SDX 3t				SDX 5t			
配套葫芦型号 Type of matched hoist	HS 0.5t				HS 1t				HS 2t				HS 3t				HS 5t			

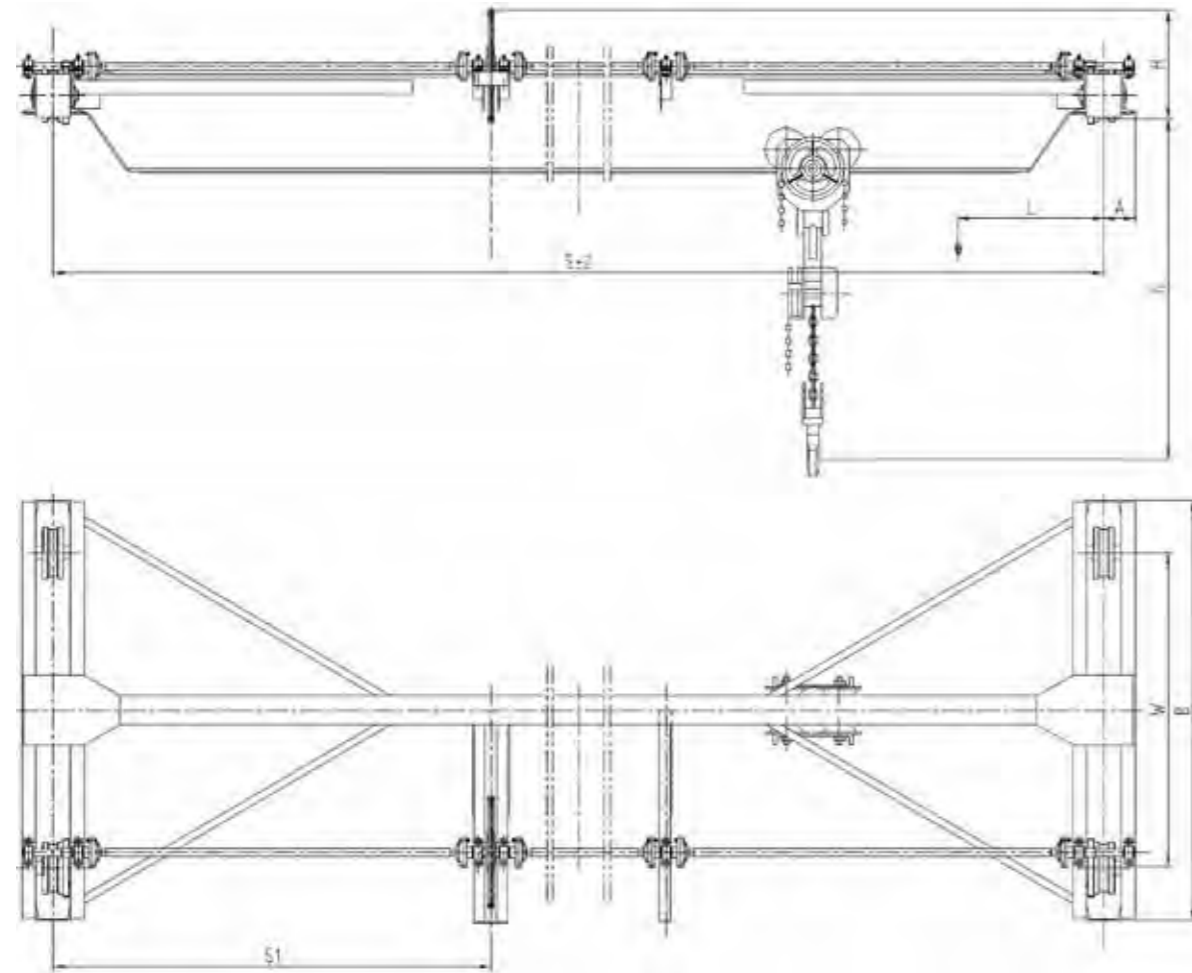
SLX型手动单梁悬挂起重机

SLX Model Manual Operational Single Beam Suspension Crane

起重量 Lifting capacity (t)	跨度S Span (m)	起重机总重 Crane total weight (kg)	最大轮压 Max. wheel load (kg)	基本尺寸 Basic dimensions (mm)						牵拉力 Drawing capacity						
				K	B	H	L1	L2	L	起重 (kg) Weight	大车(kg) Trolley	小车(kg) Crab				
0.5	3	530	3.87	1000	1520	480	1000	805	5000	19.5	6	3				
	4	563	3.92	1000	1520	480	1000	805	6000							
	5	597	3.98	1000	1520	480	1000	805	7000							
	6	734	4.4	1200	1720	540	1200	1005	8400							
	7	776	4.49	1200	1720	540	1200	1005	9400							
	8	818	4.57	1200	1720	540	1200	1005	10400							
	9	917	4.98	1500	2020	560	1400	1205	11800							
	10	958	5.01	1500	2020	560	1400	1205	12800							
	11	1093	5.42	1700	2220	590	1400	1205	13800							
	12	1141	5.53	1700	2220	590	1400	1205	14800							
	1	3	530	6.39	1000	1520	500	1000	852				5000	21	9	5
		4	563	6.45	1000	1520	500	1000	852				6000			
5		597	6.51	1000	1520	500	1000	852	7000							
6		734	6.98	1200	1720	560	1200	1052	8400							
7		776	7.08	1200	1720	560	1200	1052	9400							
8		818	7.18	1200	1720	560	1200	1052	10400							
9		1051	7.79	1500	2020	620	1400	1252	11800							
10		1104	7.92	1500	2020	620	1400	1252	12800							
11		1406	8.67	1700	2220	640	1400	1252	13800							
12		1477	8.83	1700	2220	640	1400	1252	14800							
2		3	598	11.63	1000	1530	560	800	560	4600	32.5	12	11			
		4	640	11.71	1000	1530	560	800	560	5600						
	5	682	11.8	1000	1530	560	800	560	6600							
	6	848	12.3	1200	1730	640	1000	760	8000							
	7	902	12.43	1200	1730	640	1000	760	9000							
	8	955	12.55	1200	1730	640	1000	760	10000							
	9	1265	13.35	1500	2030	660	1200	960	11400							
	10	1335	13.52	1500	2030	660	1200	960	12400							
	11	1548	14.04	1700	2230	760	1200	960	13400							
	12	1628	14.23	1700	2230	760	1200	960	14400							
	3	3	584	16.63	1000	1530	580	600	340	4200				34.5	15	15
		4	625	16.73	1000	1530	580	600	340	5200						
5		667	16.83	1000	1530	580	600	340	6200							
6		957	17.54	1200	1730	660	800	540	7600							
7		1028	17.71	1200	1730	660	800	540	8600							
8		1097	17.88	1200	1730	660	800	540	9600							
9		1340	18.51	1500	2030	760	1000	740	11000							
10		1419	18.7	1500	2030	760	1000	740	12000							
11		1695	19.38	1700	2230	810	1000	740	13000							
12		1788	19.6	1700	2230	810	1000	740	14000							
5		3	702	27.3	1000	1530	766	600	360	4200	37.5	20	20			
		4	772	27.4	1000	1530	766	600	360	5200						
	5	842	27.6	1000	1530	766	600	360	6200							
	6	1029	28.1	1200	1730	866	800	560	7600							
	7	1109	28.3	1200	1730	866	800	560	8600							
	8	1188	28.5	1200	1730	866	800	560	9600							
	9	1497	29.2	1500	2030	916	1000	760	11000							
	10	1590	29.5	1500	2030	916	1000	760	12000							
	11	2064	30.6	1700	2230	1026	1000	760	13000							
	12	2186	30.9	1700	2230	1026	1000	760	14000							

SL型手动单梁起重机

SL Model Manual Operational Single Beam Crane



起重量(t)		1	2	3	5	10
手拉力(N)	起升	210	325	345	375	400
	小车运行	60	100	140	200	250
	大车运行	70	105	140	145	170
运行速度(m/min)	小车	5.3	5.9	4.7	4.7	4.2
	大车	5.0	5.0	5.0	5.0	5.0
车轮直径(mm)		φ 270				
适用轨道面宽(mm)		37~51/60~70				
工作级别		A1				

SL型手动单梁起重机

SL Model Manual Operational Single Beam Crane

起重量 Lifting capacity (t)	跨度S(m) Span (m)	基本尺寸 Basic dimensions (mm)							重量(kg)	大车轮压 (kN)				
		S1	W	B	H	h	L	A						
1t	5	2500	1200	1800	486	600	360	168	779	6.9				
	6	3000												
	7	3500												
	8	4000												
	9	4500												
	10	3000												
	11	4000	1600	2200		630	380		929	7.3				
	12	4000												
	13	4500												
	14	4500												
	5	2500							1200	1800	770	400	820	7.0
	6	3000												
	7	3500												
	8	4000												
9	4500													
10	3000													
11	4000	1600	2200	800	415	976	7.4							
12	4000													
13	4500													
14	4500													
5	2500					1200	1800	650	460	1029	7.5			
6	3000													
7	3500													
8	4000													
9	4500													
10	3000													
11	4000	1600	2200	900	465	1186	7.9							
12	4000													
13	4500													
14	4500													
5	2500					1200	1800	650	460	1244	8.1			
6	3000													
7	3500													
8	4000													
9	4500													
10	3000													
11	4000	1600	2200	1050	510	1358	8.4							
12	4000													
13	4500													
14	4500													
5	2500					1200	1800	1300	560	1484	8.7			
6	3000													
7	3500													
8	4000													
9	4500													
10	3000													
11	4000	1600	2200	1350	585	788	11.9							
12	4000													
13	4500													
14	4500													
5	2500					1200	1800	1440	555	835	12.1			
6	3000													
7	3500													
8	4000													
9	4500													
10	3000													
11	4000	1600	2200	1490	585	882	12.2							
12	4000													
13	4500													
14	4500													
5	2500					1200	1800	1440	555	1011	12.5			
6	3000													
7	3500													
8	4000													
9	4500													
10	3000													
11	4000	1600	2200	1600	615	1068	12.7							
12	4000													
13	4500													
14	4500													
5	2500					1200	1800	1490	585	1131	12.8			
6	3000													
7	3500													
8	4000													
9	4500													
10	3000													
11	4000	1600	2200	1600	650	1462	13.6							
12	4000													
13	4500													
14	4500													
5	2500					1200	1800	1440	555	1531	13.8			
6	3000													
7	3500													
8	4000													
9	4500													
10	3000													
11	4000	1600	2200	1490	585	1619	14.0							
12	4000													
13	4500													
14	4500													
5	2500					1200	1800	1440	555	1698	14.2			
6	3000													
7	3500													
8	4000													
9	4500													
10	3000													
11	4000	1600	2200	1600	615	837	17.1							
12	4000													
13	4500													
14	4500													
5	2500					1200	1800	1440	555	894	17.2			
6	3000													
7	3500													
8	4000													
9	4500													
10	3000													
11	4000	1600	2200	1490	585	952	17.4							
12	4000													
13	4500													
14	4500													
5	2500					1200	1800	1440	555	1174	17.9			
6	3000													
7	3500													
8	4000													
9	4500													
10	3000													
11	4000	1600	2200	1490	585	1253	18.1							
12	4000													
13	4500													
14	4500													
5	2500					1200	1800	1440	555	1335	18.3			
6	3000													
7	3500													
8	4000													
9	4500													
10	3000													
11	4000	1600	2200	1490	585	1462	18.6							
12	4000													
13	4500													
14	4500													
5	2500					1200	1800	1440	555	1531	18.8			
6	3000													
7	3500													
8	4000													
9	4500													
10	3000													
11	4000	1600	2200	1490	585	1791	19.5							
12	4000													
13	4500													
14	4500													
5	2500					1200	1800	1440	555	1883	19.7			
6	3000													
7	3500													
8	4000													
9	4500													
10	3000													
11	4000	1600	2200	1490	585	970	27.3							
12	4000													
13	4500													
14	4500													
5	2500					1200	1800	1440	555	1049	27.5			
6	3000													
7	3500													
8	4000													
9	4500													
10	3000													
11	4000	1600	2200	1490	585	1128	27.8							
12	4000													
13	4500													
14	4500													
5	2500					1200	1800	1440	555	1207	28.0			
6	3000													
7	3500													
8	4000													
9	4500													
10	3000													
11	4000	1600	2200	1490	585	1286	28.2							
12	4000													
13	4500													
14	4500													
5	2500					1200	1800	1440	555	1612	29.0			
6	3000													
7	3500													
8	4000													
9	4500													
10	3000													
11	4000	1600	2200	1490	585	1701	29.2							
12	4000													
13	4500													
14	4500													
5	2500					1200	1800	1440	555	1758	29.4			
6	3000													
7	3500													
8	4000													
9	4500													
10	3000													
11	4000	1600	2200	1490	585	2207	30.5							
12	4000													
13	4500													
14	4500													
5	2500					1200	1800	1440	555	1109	52.8			
6	3000													
7	3500													
8	4000													
9	4500													
10	3000													
11	4000	1600	2200	1490	585	1197	53.0							
12	4000													
13	4500													
14	4500													
5	2500					1200	1800	1440	555	1404	53.5			
6	3000													
7	3500													
8	4000													
9	4500													
10	3000													
11	4000	1600	2200	1490	585	1513	53.8							
12	4000													
13	4500													
14	4500													
5	2500					1200	1800	1440	555	1622	54.1			
6	3000													
7	3500													
8	4000													
9	4500													
10	3000													
11	4000	1600	2200	1490	585	2002	55.0							
12	4000													
13	4500													
14	4500													
5	2500					1200	1800	1440	555	2133	55.4			
6	3000													
7	3500													
8	4000													
9	4500													
10	3000													
11	4000	1600	2200	1490	585	2264	55.7							
12	4000													
13	4500													
14	4500													
5	2500					1200	1800	1440	555	2527	56.4			
6	3000													
7	3500													
8	4000													
9	4500													
10	3000													
11	4000	1600	2200	1490	585	2669	56.7							
12	4000													
13	4500													
14	4500													

注: 重量不含手拉葫芦及单轨小车重量, h值为估算值, 随手拉葫芦型号变化有所变化。

Note: The weight does not contain chain block and monorail trolley weight, h estimated value changes according to chain block type.

LDZ型电动抓斗起重机

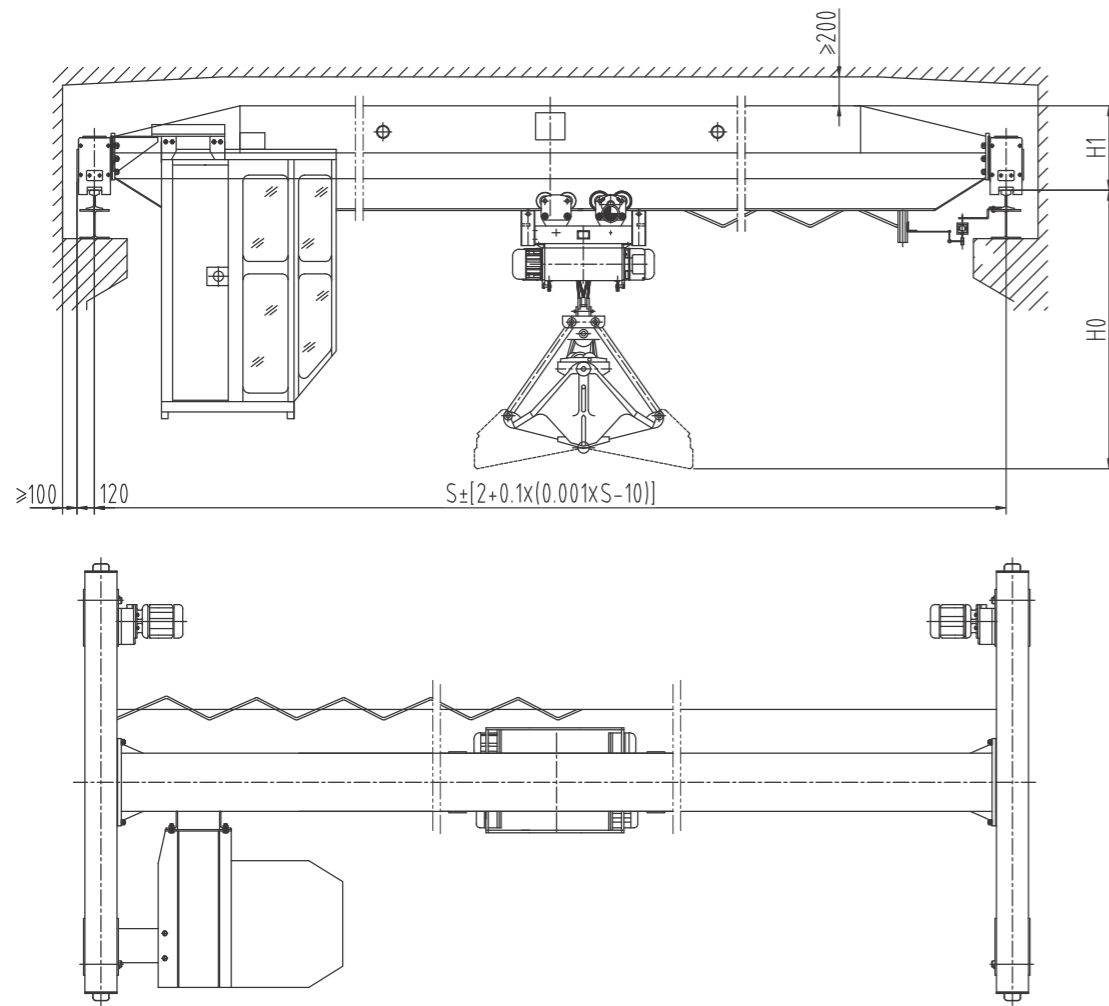
LDZ Electric Single Girder Grab Crane

产品概述:

- 1、LDZ电动单梁抓斗起重机与葫芦抓斗小车配套使用,起重量为2~10t.
- 2、用于抓取各类松散的物料。
- 3、起重量包含抓斗自重。

Product Introduction:

1. LDZ electric single-girder grab crane supporting by hoist grab car has 2 ~10 ton capacity.
2. The crane is used to grab all kinds of loose materia.
3. The lifting capacity include the weight of grab.



LDZ型电动抓斗起重机

LDZ Electric Single Girder Grab Crane

起重量 (t) Lifting capacity	2									3									
起升高度 (m) Lifting height	16									16									
起升速度(m/min) Lifting speed	16									16									
物料比重(t/m³) specific gravity	≤1									≤1									
工作制度 Working system	FC=25%、A4									FC=25%、A4									
运行速度 Travelling speed	大车 trolley	20/30 (地操) ; 30/45 (操纵室)									20/30 (地操) ; 30/45 (操纵室)								
	小车 crab	20/30									20/30								
抓斗 Grab	型号	自重t			容积m³			型号	自重			容积							
	DZ12-1	1.12			0.5			DZ12-1	1.12			0.5							
电动机 Motor	用途 Use	型号	功率			转速			型号	功率			转速						
	起升 Hoisting	ZD,31-4	3			1380			ZD,32-4	4.5			1380						
	开闭 Open & close	ZD,31-4	3			1380			ZD,32-4	4.5			1380						
	大车运行 Trolley	地面 ground	ZDY(D),21-4	2×0.8			1380			ZDY(D),21-4/ ZDY(D),22-4	2×0.8/2×1.5			1380					
		操纵室 room	ZDR100-4D	2×1.5			1380			ZDR100-4D	2×1.5			1380					
	小车运行 Crab travel	ZDY,12-4	2×0.4			1380			ZDY,12-4	2×0.4			1380						
跨度 Span	4.5	7.5	10.5	13.5	16.5	19.5	22.5	25.5	28.5	4.5	7.5	10.5	13.5	16.5	19.5	22.5	25.5	28.5	
起重机总重 (t) Total weight	地面 ground	3.45	3.82	4.15	4.54	5.36	5.93	7.12	7.81	10.05	3.54	3.98	4.37	4.9	5.49	6.55	7.31	8.56	10.7
	操纵室 room	3.85	4.22	4.55	4.94	5.76	6.33	7.52	8.21	10.45	3.94	4.38	4.77	5.3	5.89	6.95	7.71	8.96	11.1
最大轮压 (t) Max.wheel load	地面 ground	1.86	1.98	2.03	2.11	2.35	2.53	2.78	2.99	3.32	2.36	2.49	2.63	2.76	2.91	3.13	3.39	3.69	4.05
	操纵室 room	2.76	2.88	2.93	3.01	3.25	3.43	3.68	3.89	4.22	3.26	3.39	3.53	3.66	3.81	4.03	4.29	4.59	4.95
基本尺寸 Basic dimensions	K/B	地面 ground	1500/2000			2000/2500	2500/3000	3000/3500	3500/4000	4000/4500	1500/2000	2000/2500	2500/3000	3000/3500	3500/4000	4000/4500			
		操纵室 room	2500/3000			3000/3500	3500/4000	4000/4500	2500/3000			3000/3500	3500/4000	4000/4500					
	H ₀	~3300									~3320								
	H ₁	530	580	660	725	835	880	940	580	660	725	835	880	940	1020				

LDZ型电动抓斗起重机

LDZ Electric Single Girder Grab Crane

起重量 (t) Lifting capacity		5									10																			
起升高度 (m) Lifting height		16									13																			
起升速度(m/min) Lifting speed		16									14																			
物料比重(t/m³) specific gravity		≤1									≤1																			
工作制度 Working system		FC=25%、A4									FC=25%、A4																			
运行速度 Travelling speed	大车trolley	20/30 (地操) ; 30/45 (操纵室)									20/30 (地操) ; 30/45 (操纵室)																			
	小车crab	20/30									20/30																			
抓斗 Grab		型号	自重t			容积m³			型号	自重			容积																	
		DZ12-2	1.2			0.75			DZ12-3	1.45			1																	
电动机 Motor	用途 Use	型号		功率		转速		型号		功率		转速																		
	起升 Hoisting	ZD,41-4		7.5		1380		ZD,51-4		13		1380																		
	开闭 Open & close	ZD,41-4		7.5		1380		ZD,51-4		13		1380																		
	大车运行 Trolley	地面 ground	ZDY(D),22-4/ ZDY(D),23-4		2×1.5/2×2.2		1380		ZDY(D),22-4/ ZDY(D),23-4		2×1.5/2×2.2		1380																	
		操纵室 room	ZDR100-4D/ ZDR112L,-4		2×1.5/2×2.1		1350		ZDR100-4D/ ZDR112L,-4/ ZDR112L,-4		2×1.5/ 2×2.1/ 2×3.0		1350																	
	小车运行 Crab travel	ZDY,21-4		2×0.8		1380		ZDY,21-4		2×0.8		1380																		
跨度 Span		4.5	7.5	10.5	13.5	16.5	19.5	22.5	25.5	28.5	4.5	7.5	10.5	13.5	16.5	19.5	22.5	25.5	28.5											
起重机总重 (t) Total weight	地面 ground	4.63	5.08	5.53	6.32	7.02	8.03	9.44	11.7	16	5.08	5.63	6.18	7.09	8.5	10.2	11.4	15.4	17.5											
	操纵室 room	5.03	5.48	5.93	6.72	7.42	8.43	9.84	12.1	16.4	5.48	6.03	6.58	7.49	8.9	10.6	11.8	15.8	17.9											
最大轮压 (t) Max.wheel load	地面 ground	3.66	3.81	3.89	3.98	4.18	4.48	4.87	5.29	6.05	6.08	6.28	6.42	6.69	7.16	7.47	7.65	8.59	9.45											
	操纵室 room	4.56	4.71	4.79	4.88	5.08	5.38	5.77	6.19	6.95	6.98	7.18	7.32	7.59	8.06	8.37	8.55	9.49	10.4											
基本尺寸 Basic dimensions	K/B	地面 ground	1500/2000			2000/2500		2500/3000		3000/3500		3500/4000		4000/4500		2000/2500			2500/3000		3000/3500		3500/4000		4000/4500					
		操纵室 room	2500/3000						3000/3500		3500/4000		4000/4700		3000/3500						3500/4200		4000/4700							
	H ₀	~3580											~4000																	
	H ₁	735			835		880		890		920		1065		1160		835			890		980		1065		1135		1200		1300

防爆梁式起重机

Explosion Proof Beam Crane

产品概述:

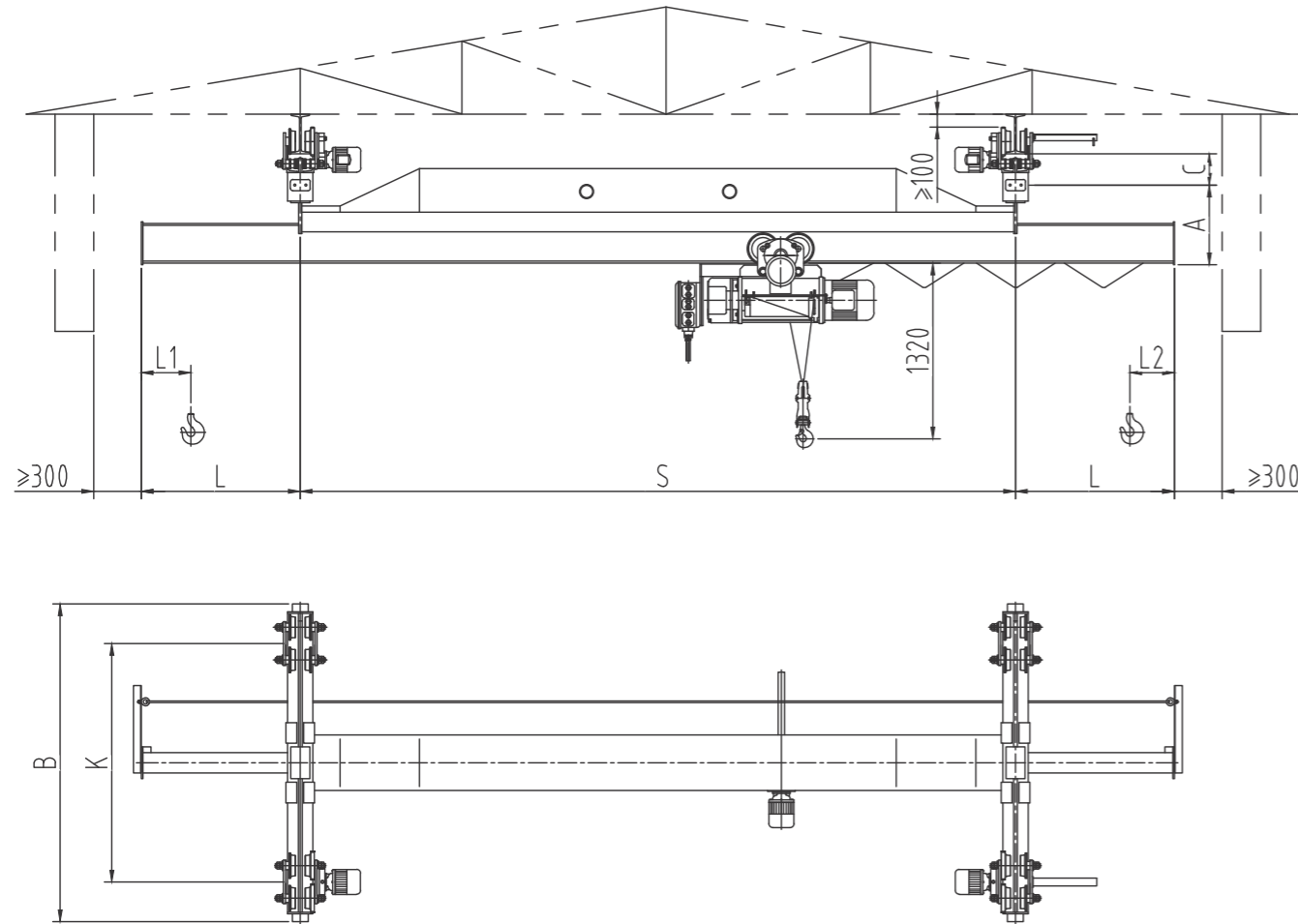
- 1、防爆梁式起重机包括LXB防爆电动单梁悬挂起重机、LB防爆电动单梁起重机及LHB防爆电动葫芦桥式起重机。
- 2、防标分别为Exd II BT4, Exd II CT4及DIPA21TA, T4.
- 3、工作级别为A3, 工作环境为-20°C~40°C.

Product Introduction:

- 1.Expllosion-proof girder crane include LXB Explosion-proof single girder suspension crane 、LB Explosion-proof single girder crane and LHB type Explosion-proof electric hoist double girder crane.
- 2.For each of the Explosion-proof sign is Exd II BT4, Exd II CT4, DIPA21TA, T4.
- 3.Working class M3, Work environment temperature -20~40°C.

LXB型防爆电动单梁悬挂起重机

LXB Type Explosion Proof Electric Single Girder Suspension Crane



起重量 Cap		0.5~10	
防爆标志 Explosion proof grade		ExdII BT4/ExdII CT4	
工作级别 Working class		A3	
电源 Power source		3- Phase A.c. 380V 50HZ	
起重机运行机构 Crane traveling mechanism	运行速度 traveling speed		20 m/min
	电动机 motor	0.5~3t	3~22.5m
		5t	3~16m
		5t	16~22.5m
		10t	3~22.5m
		BZDY12-4/0.4KWx2	
		BZDY21-4/0.8KWx2	

LXB型防爆电动单梁悬挂起重机

LXB Type Explosion Proof Electric Single Girder Suspension Crane

起重量 Rated load	跨度 (m) Span	12.5	12	11.5	11	10.5	10	9.5	9	8.5	8	7.5	7	6.5	6	5.5	5	4.5	4	3.5	3		
		1876	1832	1792	1752	1708	1668	1624	1583	1540	1499	1396	1355	1312	1271	1228	1187	1144	1103	1060	1019		
		7.97	7.86	7.77	7.68	7.58	7.48	7.38	7.29	7.19	7.09	6.95	6.86	6.78	6.69	6.52	6.45	6.38	6.33	6.28	6.26		
		4.69	4.58	4.48	4.38	4.27	4.17	4.06	3.96	3.85	3.80	3.49	3.49	3.28	3.18	3.07	2.97	2.86	2.76	2.65	2.55		
		起升高度不大于9米时, h=880mm; 起升高度大于9米时h=947mm; When lifting height is less than 9m, h=880mm; When lifting height is more than 9m, h=947mm;																					
		435																					
		~208																					
		370																					
		223																					
		1500																					
		1000																					
		750																					
		1000																					
起重量 Rated load	跨度 (m) Span	22.5	22	21.5	21	20.5	20	19.5	19	18.5	18	17.5	17	16.5	16	15.5	15	14.5	14	13.5	13		
		2976	2929	2885	2839	2793	2745	2504	2460	2410	2376	2386	2292	2252	2208	2168	2124	2084	2000	1960	1916		
		10.66	10.54	10.43	10.31	10.21	10.09	9.49	9.38	9.28	9.18	8.94	8.97	8.87	8.77	8.67	8.57	8.47	8.26	8.17	8.06		
		7.44	7.32	7.21	7.09	6.98	6.86	6.26	6.15	6.05	5.84	5.73	5.63	5.52	5.42	5.31	5.21	5.00	4.90	4.79			
		起升高度不大于9米时, h=880mm; 起升高度大于9米时h=947mm; When lifting height is less than 9m, h=880mm; When lifting height is more than 9m, h=947mm;																					
		435																					
		~208																					
		370																					
		223																					
		3000																					
		2500																					
		3000																					
		1000																					

LXB型防爆电动单梁悬挂起重机

LXB Type Explosion Proof Electric Single Girder Suspension Crane

起重量 Rated load		1t																				
跨度 (m) Span		3	3.5	4	4.5	5	5.5	6	6.5	7	7.5	8	8.5	9	9.5	10	10.5	11	11.5	12	12.5	
起重量 (kg) Total weight	1084	1075	1118	1159	1202	1243	1286	1327	1370	1411	1454	1555	1598	1639	1683	1723	1767	1807	1847	1891	1931	
最大轮压 (kN) Max wheel load	9.57	9.52	9.52	9.53	9.57	9.61	9.67	9.74	9.81	9.88	9.96	10.19	10.28	10.36	10.46	10.54	10.64	10.73	10.82	10.91	11.01	
最小轮压 (kN) Min wheel load	2.58	2.69	2.89	2.90	3.01	3.11	3.22	3.32	3.43	3.53	3.64	3.89	4.00	4.10	4.21	4.31	4.42	4.52	4.62	4.73	4.83	
h(mm)	起升高度不大于9米时, h=847mm; 起升高度大于9米时h=947mm; When lifting height is less than 9m, h=847mm; When lifting height is more than 9m, h=947mm;																					
A(mm)	435																					
C(mm)	~208																					
L1(mm)	310																					
L2(mm)	130																					
B(mm)	1500										2000						2500					
K(mm)	1000										1500						2000					
L(mm)	750										1000						1000					
起重量 Rated load		1t																				
跨度 (m) Span		13	13.5	14	14.5	15	15.5	16	16.5	17	17.5	18	18.5	19	19.5	20	20.5	21	21.5	22	22.5	
起重量 (kg) Total weight	1931	1975	2015	2217	2261	2309	2353	2401	2445	2483	2680	2732	2779	2831	3111	3167	3219	3275	3327	3383	3439	
最大轮压 (kN) Max wheel load	11.01	11.10	11.20	11.70	11.80	11.91	12.01	12.13	12.23	12.70	12.81	12.93	13.05	13.17	13.87	14.01	14.13	14.27	14.40	14.53	14.66	
最小轮压 (kN) Min wheel load	4.83	4.94	5.04	5.54	5.65	5.77	5.88	6.00	6.11	6.58	6.70	6.83	6.95	7.08	7.78	7.92	8.05	8.19	8.32	8.46	8.60	
h(mm)	起升高度不大于9米时, h=847mm; 起升高度大于9米时h=947mm; When lifting height is less than 9m, h=847mm; When lifting height is more than 9m, h=947mm;																					
A(mm)	435																					
C(mm)	~208																					
L1(mm)	310																					
L2(mm)	130																					
B(mm)	2500										3000						3500					
K(mm)	2000										2500						3000					
L(mm)	1000																					

LXB型防爆电动单梁悬挂起重机

LXB Type Explosion Proof Electric Single Girder Suspension Crane

起重量 Rated load		2t																				
跨度 (m) Span		3	3.5	4	4.5	5	5.5	6	6.5	7	7.5	8	8.5	9	9.5	10	10.5	11	11.5	12	12.5	
起重量 (kg) Total weight	1121	1162	1205	1246	1289	1330	1373	1414	1457	1498	1541	1642	1685	1726	1770	1810	1854	1895	1933	1974	2014	
最大轮压 (kN) Max wheel load	16.54	16.35	16.24	16.17	16.15	16.14	16.15	16.17	16.22	16.26	16.32	16.52	16.59	16.66	16.73	16.81	16.89	17.44	17.54	17.65	17.75	
最小轮压 (kN) Min wheel load	2.08	2.9	3.01	3.11	3.22	3.32	3.43	3.53	3.64	3.74	3.85	4.11	4.21	4.32	4.42	4.53	4.63	5.21	5.33	5.46	5.58	
h(mm)	起升高度不大于9米时, h=1020mm; 起升高度大于9米时h=1130mm; When lifting height is less than 9m, h=1020mm; When lifting height is more than 9m, h=1130mm;																					
A(mm)	435																					
C(mm)	~208																					
L1(mm)	290																					
L2(mm)	170																					
B(mm)	1500										2000						2500					
K(mm)	1000										1500						2000					
L(mm)	750										1000						1000					
起重量 Rated load		2t																				
跨度 (m) Span		13	13.5	14	14.5	15	15.5	16	16.5	17	17.5	18	18.5	19	19.5	20	20.5	21	21.5	22	22.5	
起重量 (kg) Total weight	2232	2283	2331	2367	2419	2475	2527	2573	2623	2685	2689	3125	3186	3242	3303	3355	3405	3451	3497	3543	3589	
最大轮压 (kN) Max wheel load	17.75	17.86	17.96	18.54	18.85	18.78	18.90	19.03	19.14	19.72	19.85	19.99	20.12	20.27	20.97	21.12	21.27	21.42	21.57	21.73	21.89	
最小轮压 (kN) Min wheel load	5.38	5.71	5.83	6.42	6.55	6.69	6.82	6.96	7.09	7.67	7.81	7.97	8.11	8.26	8.96	9.13	9.28	9.44	9.59	9.76	9.92	
h(mm)	起升高度不大于9米时, h=1020mm; 起升高度大于9米时h=1130mm; When lifting height is less than 9m, h=1020mm; When lifting height is more than 9m, h=1130mm;																					
A(mm)	480																					
C(mm)	~208																					
L1(mm)	290																					
L2(mm)	170																					
B(mm)	2500										3000						3500					
K(mm)	2000										2500						3000					
L(mm)	1000																					

LXB型防爆电动单梁悬挂起重机

LXB Type Explosion Proof Electric Single Girder Suspension Crane

起重量 Rated load		3t																			
		3	3.5	4	4.5	5	5.5	6	6.5	7	7.5	8	8.5	9	9.5	10	10.5	11	11.5	12	12.5
跨度 (m) Span	12.5	13.42	13.89	14.39	14.86	15.36	15.83	16.33	16.80	17.30	17.80	18.40	18.90	19.37	19.87	20.34	20.84	21.31	21.78	22.25	22.70
起重量 (kg) Total weight	23.54	23.22	22.89	22.81	22.76	22.75	22.75	22.78	22.81	22.86	22.90	23.07	23.20	23.20	23.28	23.35	23.44	23.57	23.66	23.76	23.87
最大轮压 (kN) Max wheel load	3.11	3.23	3.35	3.47	3.60	3.71	3.84	3.96	4.08	4.20	4.33	4.46	4.58	4.72	4.84	4.96	5.08	5.21	5.33	5.45	5.55
最小轮压 (kN) Min wheel load																					
h(mm)	起升高度不大于9米时, h=1134mm; 起升高度大于9米时h=1240mm; When lifting height is less than 9m, h=1134mm; When lifting height is more than 9m, h=1240mm;																				
A(mm)	455																				
C(mm)	~208																				
L1(mm)	290																				
L2(mm)	170																				
B(mm)	1500										2000										2500
K(mm)	1000										1500										2000
L(mm)	1000																				
起重量 Rated load		3t																			
		3	3.5	4	4.5	5	5.5	6	6.5	7	7.5	8	8.5	9	9.5	10	10.5	11	11.5	12	12.5
跨度 (m) Span	13	13.5	14	14.5	15	15.5	16	16.5	17	17.5	18	18.5	19	19.5	20	20.5	21	21.5	22	22.5	23
起重量 (kg) Total weight	24.81	24.87	25.09	25.84	26.40	26.92	27.40	27.82	28.20	28.54	28.94	29.30	29.62	29.90	30.19	30.45	30.68	30.88	31.05	31.20	31.33
最大轮压 (kN) Max wheel load	24.18	24.29	24.40	24.99	25.11	25.24	25.36	25.50	25.62	25.71	25.78	25.84	25.89	25.93	25.96	25.98	26.00	26.01	26.02	26.03	26.04
最小轮压 (kN) Min wheel load	6.08	6.22	6.35	6.96	7.10	7.25	7.40	7.55	7.69	7.82	7.94	8.05	8.15	8.24	8.32	8.39	8.45	8.50	8.54	8.58	8.61
h(mm)	起升高度不大于9米时, h=1134mm; 起升高度大于9米时h=1240mm; When lifting height is less than 9m, h=1134mm; When lifting height is more than 9m, h=1240mm;																				
A(mm)	555																				
C(mm)	~208																				
L1(mm)	290																				
L2(mm)	170																				
B(mm)	2500										3000										3500
K(mm)	2000										2500										3000
L(mm)	1000																				

LXB型防爆电动单梁悬挂起重机

LXB Type Explosion Proof Electric Single Girder Suspension Crane

起重量 Rated load		5t																			
		3	3.5	4	4.5	5	5.5	6	6.5	7	7.5	8	8.5	9	9.5	10	10.5	11	11.5	12	12.5
跨度 (m) Span	15.41	15.99	16.61	17.19	17.80	18.38	18.90	19.58	20.19	20.77	21.30	21.71	22.10	22.48	22.84	23.18	23.50	23.79	24.06	24.31	24.54
起重量 (kg) Total weight	37.31	37.33	36.35	36.67	36.49	36.36	36.28	36.23	36.22	36.22	36.25	37.18	37.20	37.22	37.26	37.30	37.37	37.40	37.48	37.50	37.50
最大轮压 (kN) Max wheel load	3.85	4.00	4.15	4.30	4.45	4.60	4.75	4.89	5.05	5.19	5.35	5.68	5.83	5.98	6.13	6.28	6.43	6.58	6.71	6.81	6.89
最小轮压 (kN) Min wheel load																					
h(mm)	起升高度不大于9米时, h=1320mm; 起升高度大于9米时h=1383mm; When lifting height is less than 9m, h=1320mm; When lifting height is more than 9m, h=1383mm;																				
A(mm)	485																				
C(mm)	~208																				
L1(mm)	360																				
L2(mm)	150																				
B(mm)	1500										2000										2500
K(mm)	1000										1500										2000
L(mm)	1000																				
起重量 Rated load		5t																			
		3	3.5	4	4.5	5	5.5	6	6.5	7	7.5	8	8.5	9	9.5	10	10.5	11	11.5	12	12.5
跨度 (m) Span	13	13.5	14	14.5	15	15.5	16	16.5	17	17.5	18	18.5	19	19.5	20	20.5	21	21.5	22	22.5	23
起重量 (kg) Total weight	30.62	31.34	32.01	32.57	33.03	33.75	34.51	35.28	35.97	36.60	37.18	37.71	38.20	38.66	39.09	39.49	39.86	40.20	40.51	40.79	41.05
最大轮压 (kN) Max wheel load	38.30	38.42	38.53	38.31	38.43	38.57	38.69	38.99	39.13	39.29	39.49	41.66	41.85	42.03	42.17	42.29	42.38	42.45	42.50	42.54	42.57
最小轮压 (kN) Min wheel load	7.65	7.84	8.00	8.54	9.04	9.19	9.35	9.70	9.87	10.07	10.30	11.50	11.73	11.93	12.14	12.35	12.55	12.75	12.94	13.13	13.31
h(mm)	起升高度不大于9米时, h=1320mm; 起升高度大于9米时h=1383mm; When lifting height is less than 9m, h=1320mm; When lifting height is more than 9m, h=1383mm;																				
A(mm)	590																				
C(mm)	~240																				
L1(mm)	360																				
L2(mm)	150																				
B(mm)	2500										3000										3500
K(mm)	2000										2500										3000
L(mm)	1000																				

LXB型防爆电动单梁悬挂起重机

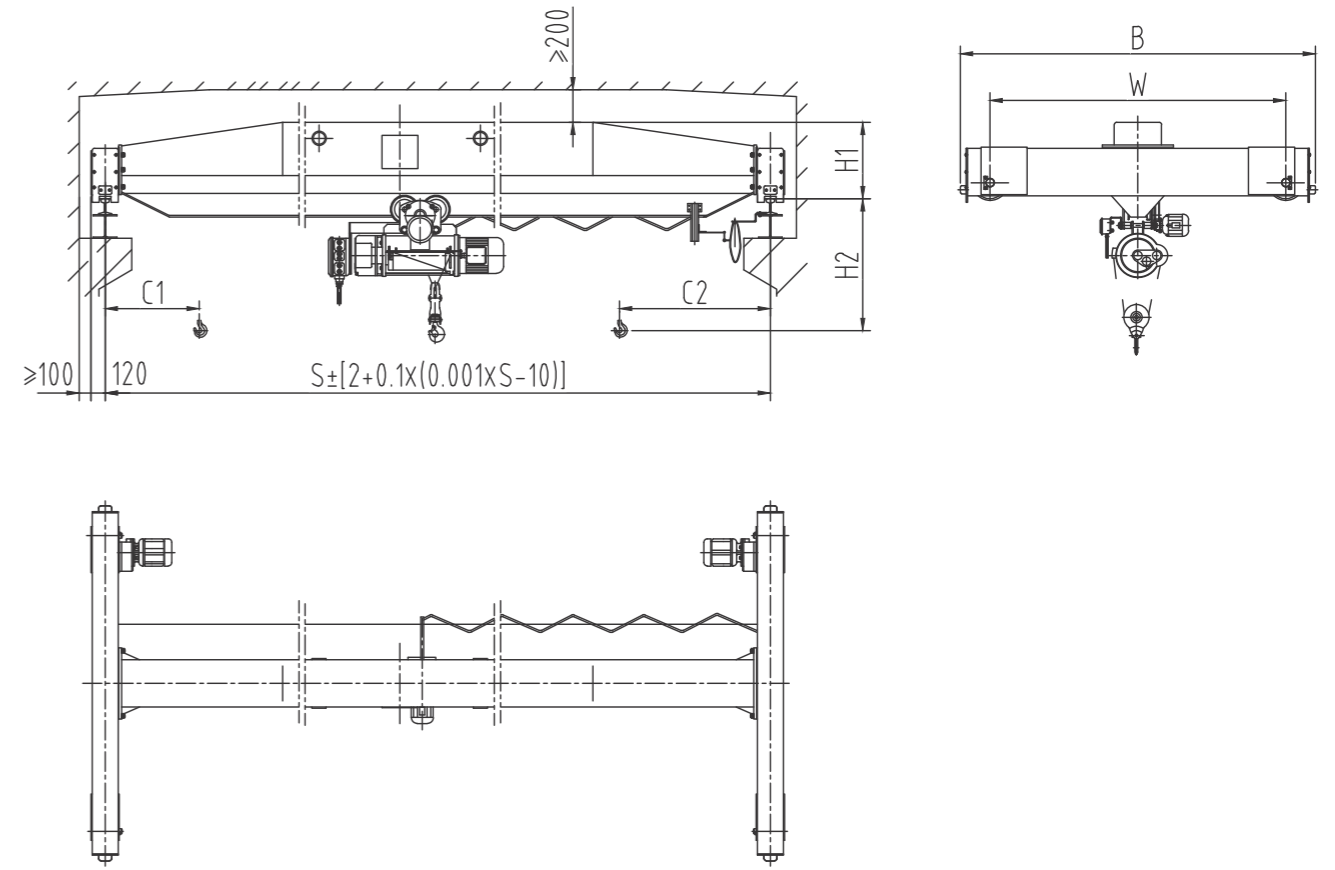
LXB Type Explosion Proof Electric Single Girder Suspension Crane

起重量 Rated load	10t																				
	跨度 (m) Span	3	3.5	4	4.5	5	5.5	6	6.5	7	7.5	8	8.5	9	9.5	10	10.5	11	11.5	12	12.5
起重量 Total weight	2314	2372	2434	2492	2554	2612	2673	2731	2789	2851	2913	3189	3259	3326	3405	3482	3551	3608	3689	3789	4170
最大轮压(kN) Max wheel load	63.94	64.08	64.24	64.38	64.54	64.68	64.84	64.98	65.14	65.28	65.44	69.85	69.82	69.84	69.85	69.90	69.95	70.04	70.06	70.06	71.01
最小轮压(kN) Min wheel load	5.79	5.93	6.08	6.23	6.38	6.53	6.68	6.83	6.98	7.13	7.28	8.12	8.29	8.45	8.66	8.86	9.03	9.15	9.17	9.17	10.43
h(mm)	1670																				
A(mm)	555																				
C(mm)	~240																				
L1(mm)	500																				
L2(mm)	500																				
B(mm)	1500																				
K(mm)	1000																				
L(mm)	1000																				
起重量 Rated load	10t																				
	跨度 (m) Span	13	13.5	14	14.5	15	15.5	16	16.5	17	17.5	18	18.5	19	19.5	20	20.5	21	21.5	22	22.5
起重量 Total weight	4262	4342	4433	4531	4635	4758	4892	5031	5175	5325	5483	5656	5845	6048	6266	6497	6742	6991	7244	7501	7762
最大轮压(kN) Max wheel load	71.14	71.26	71.40	71.70	71.87	72.01	72.18	72.90	73.08	73.08	74.27	74.48	74.66	74.87	75.05	77.10	77.33	77.60	77.83	78.10	78.33
最小轮压(kN) Min wheel load	10.65	10.86	11.08	11.45	11.69	11.89	12.13	12.90	13.14	13.14	14.38	14.64	14.86	15.12	15.34	17.45	17.70	18.00	18.2	18.37	18.83
h(mm)	1670																				
A(mm)	650																				
C(mm)	~240																				
L1(mm)	500																				
L2(mm)	500																				
B(mm)	2500																				
K(mm)	3000																				
L(mm)	1000																				

备注:L1,L2的尺寸均为h=6m的葫芦的尺寸,其他起升高度的左右极限尺寸请咨询。
Remark:L1, L2 is left limit dimension and right limit dimension of electric hoist with lifting height 6m and consult technicians for left limit dimension and right limit dimension of other lifting height.

LB型防爆电动单梁起重机

LB Type Explosion Proof Electric Single Girder Crane



起重量 Cap	1~20	
防爆标志 Explosion proof grade	ExdIIBT4/ExdIICT4	
工作级别 Working system	A3	
电源 Power source	3- Phase A.c. 380V 50HZ	
起重机运行机构 Crane traveling mechanism	运行速度 traveling speed	20 m/min
	功率 Power	0.8KWx2 1.5KWx2 2.2KWx2
车轮直径 wheel diameter	φ250, φ270, φ400	
荐用钢轨 Steel track	P18,P24,P30,P38,P43	

LB型防爆电动单梁起重机

LB Type Explosion Proof Electric Single Girder Crane

起重量 Lifting capacity	跨度 Span	起重机总重 Crane total weight	最大轮压 Max.wheel load	最小轮压 Min.wheel load	基本尺寸 (mm) Basic dimensions					
					踏面至主梁顶 H1(mm) Wheel tread approach to top	踏面至吊钩中 心 H2(mm) Wheel tread approach to center of hook	端梁轮距 W(mm) End carriage wheelbase	端梁总长 B(mm) Total length of end carriage	吊钩左极限 C1(mm) Hook approach to limit position on the left	吊钩右极限 C2(mm) Hook approach to limit position on the right
1	7.5	1.59	8.7	3.7	490	910	1500	2000	796	1274
	8	1.64	8.9	3.8						
	8.5	1.68	9	3.9						
	9	1.73	9.2	4						
	9.5	1.78	9.3	4.2						
	10	1.83	9.5	4.3						
	10.5	1.87	9.6	4.4						
	11	1.92	9.8	4.5						
	11.5	1.96	9.9	4.6						
	12	2.01	10	4.7						
	12.5	2.06	10.2	4.8						
	13	2.11	10.3	5						
	13.5	2.15	10.4	5.1						
	14	2.2	10.5	5.2						
	14.5	2.39	11	5.7						
	15	2.44	11.2	5.8						
	15.5	2.49	11.3	5.9						
	16	2.54	11.4	6						
	16.5	2.59	11.6	6.2						
	17	2.64	11.7	6.3						
	17.5	2.85	12.2	6.8						
	18	2.9	12.4	6.9						
	18.5	2.95	12.5	7.1						
	19	3.01	12.6	7.2						
	19.5	3.06	12.8	7.3						
	20	3.26	13.3	7.8						
	20.5	3.32	13.4	8						
	21	3.37	13.6	8.1						
	21.5	3.43	13.7	8.3						
	22	3.49	13.9	8.4						
	22.5	3.55	14	8.5						
	23	4.26	15.8	10.3						
23.5	4.33	16	10.5							
24	4.4	16.2	10.7							
24.5	4.47	16.4	10.8							
25	4.54	16.5	11							
25.5	4.61	16.7	11.2							
26	5.25	18.3	12.8							
26.5	5.33	18.5	13							
27	5.41	18.7	13.2							
27.5	5.5	18.9	13.4							
28	5.57	19.1	13.6							
28.5	5.66	19.4	13.8							

LB型防爆电动单梁起重机

LB Type Explosion Proof Electric Single Girder Crane

起重量 Lifting capacity	跨度 Span	起重机总重 Crane total weight	最大轮压 Max.wheel load	最小轮压 Min.wheel load	基本尺寸 (mm) Basic dimensions					
					踏面至主梁顶 H1(mm) Wheel tread approach to top	踏面至吊钩中 心 H2(mm) Wheel tread approach to center of hook	端梁轮距 W(mm) End carriage wheelbase	端梁总长 B(mm) Total length of end carriage	吊钩左极限 C1(mm) Hook approach to limit position on the left	吊钩右极限 C2(mm) Hook approach to limit position on the right
2	7.5	1.68	13.6	3.7	490	1080	1500	2000	796	1274
	8	1.72	13.8	3.9						
	8.5	1.77	14	4						
	9	1.82	14.1	4.1						
	9.5	1.87	14.3	4.2						
	10	1.91	14.5	4.3						
	10.5	1.96	14.6	4.4						
	11	2.01	14.8	4.5						
	11.5	2.14	15.2	4.9						
	12	2.19	15.3	5						
	12.5	2.24	15.5	5.1						
	13	2.29	15.6	5.2						
	13.5	2.34	15.8	5.3						
	14	2.39	15.9	5.5						
	14.5	2.67	16.7	6.2						
	15	2.73	16.8	6.3						
	15.5	2.79	17	6.5						
	16	2.84	17.1	6.6						
	16.5	2.9	17.3	6.7						
	17	2.96	17.5	6.9						
	17.5	3.48	18.8	8.2						
	18	3.55	19	8.4						
	18.5	3.62	19.2	8.5						
	19	3.69	19.3	8.7						
	19.5	3.76	19.5	8.9						
	20	4.03	20.2	9.5						
	20.5	4.11	20.4	9.7						
	21	4.18	20.6	9.9						
	21.5	4.25	20.8	10.1						
	22	4.32	21	10.3						
	22.5	4.4	21.2	10.5						
	23	5.23	23.3	12.6						
23.5	5.33	23.5	12.8							
24	5.41	23.7	13							
24.5	5.5	24	13.2							
25	5.58	24.2	13.4							
25.5	5.68	24.4	13.7							
26	6.35	26.1	15.3							
26.5	6.45	26.4	15.6							
27	6.55	26.6	15.8							
27.5	6.65	26.9	16.1							
28	6.74	27.1	16.3							
28.5	6.85	27.4	16.6							

LB型防爆电动单梁起重机

LB Type Explosion Proof Electric Single Girder Crane

LB型防爆电动单梁起重机

LB Type Explosion Proof Electric Single Girder Crane

起重量 Lifting capacity	跨度 Span	起重机总重 Crane total weight	最大轮压 Max.wheel load	最小轮压 Min.wheel load	基本尺寸 (mm) Basic dimensions								
					踏面至主梁顶 H1(mm) Wheel tread approach to top	踏面至吊钩中 心 H2(mm) Wheel tread approach to center of hook	端梁轮距 W(mm) End carriage wheelbase	端梁总长 B(mm) Total length of end carriage	吊钩左极限 C1(mm) Hook approach to limit position on the left	吊钩右极限 C2(mm) Hook approach to limit position on the right			
t	S(m)	(地面操作) G (t) Ground controlling	Rmax (kN)	Rmin (kN)	530	1270	1500	2000	819	1291			
		7.5									1.86	18.6	4.1
		8									1.91	18.9	4.2
		8.5									1.97	19.1	4.3
		9									2.03	19.3	4.5
		9.5									2.08	19.5	4.6
		10									2.13	19.7	4.7
		10.5									2.19	19.9	4.9
		11									2.24	20.1	5
		11.5									2.35	20.5	5.3
		12									2.41	20.7	5.4
	3	580	1270	2000	2500	819	1291						
								12.5	2.47	20.8	5.5		
								13	2.52	21	5.7		
								13.5	2.58	21.2	5.8		
								14	2.64	21.4	5.9		
								14.5	3.12	22.6	7.2		
								15	3.19	22.8	7.3		
								15.5	3.26	23	7.5		
		660	1290	2000	2500	819	1291						
								16	3.33	23.2	7.7		
								16.5	3.4	23.4	7.9		
								17	3.47	23.6	8		
								17.5	3.68	24.2	8.5		
								18	3.75	24.4	8.7		
								18.5	3.82	24.6	8.9		
								19	3.89	24.8	9.1		
								19.5	3.97	25	9.3		
20	4.73							26.9	11.2				
835	1295	3000	3500	819	1291								
						20.5	4.82	27.1	11.4				
						21	4.9	27.4	11.6				
						21.5	5	27.6	11.8				
						22	5.08	27.8	12				
						22.5	5.17	28.1	12.2				
						23	5.49	28.9	13				
						23.5	5.58	29.1	13.3				
						24	5.67	29.4	13.5				
						24.5	5.76	29.6	13.7				
880	1330	3500	4000	819	1291								
						25	5.85	29.8	13.9				
						25.5	5.95	30.1	14.2				
						26	7.52	34	18.1				
						26.5	7.64	34.3	18.4				
						27	7.74	34.6	18.7				
						27.5	7.87	34.9	19				
						28	7.97	35.2	19.2				
						28.5	8.1	35.5	19.5				

起重量 Lifting capacity	跨度 Span	起重机总重 Crane total weight	最大轮压 Max.wheel load	最小轮压 Min.wheel load	基本尺寸 (mm) Basic dimensions								
					踏面至主梁顶 H1(mm) Wheel tread approach to top	踏面至吊钩中 心 H2(mm) Wheel tread approach to center of hook	端梁轮距 W(mm) End carriage wheelbase	端梁总长 B(mm) Total length of end carriage	吊钩左极限 C1(mm) Hook approach to limit position on the left	吊钩右极限 C2(mm) Hook approach to limit position on the right			
t	S(m)	(地面操作) G (t) Ground controlling	Rmax (kN)	Rmin (kN)	580	1460	1500	2000	842	1310			
		7.5									2.22	28.7	4.6
		8									2.28	29.1	4.7
		8.5									2.35	29.4	4.9
		9									2.41	29.7	5
		9.5									2.48	30	5.2
		10									2.54	30.3	5.3
		10.5									2.61	30.6	5.5
		11									2.67	30.8	5.6
		11.5									2.86	31.4	6.1
		12									2.93	31.6	6.3
	5	660	1460	2000	2500	842	1310						
								12.5	3	31.9	6.4		
								13	3.07	32.1	6.6		
								13.5	3.14	32.4	6.8		
								14	3.21	32.6	6.9		
								14.5	3.43	33.2	7.5		
								15	3.5	33.5	7.7		
								15.5	3.58	33.7	7.9		
		725	1475	2000	2500	842	1310						
								16	3.65	33.9	8		
								16.5	3.72	34.2	8.2		
								17	3.79	34.4	8.4		
								17.5	4.44	36	10		
								18	4.52	36.3	10.2		
								18.5	4.61	36.5	10.4		
								19	4.69	36.8	10.6		
								19.5	4.79	37	10.8		
20	5.09							37.8	11.6				
835	1465	2500	3000	842	1310								
						20.5	5.19	38.1	11.8				
						21	5.27	38.3	12				
						21.5	5.37	38.6	12.3				
						22	5.45	38.8	12.5				
						22.5	5.55	39.1	12.7				
						23	6.27	40.9	14.6				
						23.5	6.39	41.2	14.8				
						24	6.48	41.5	15.1				
						24.5	6.59	41.8	15.3				
940	1540	3500	4000	842	1310								
						25	6.69	42	15.6				
						25.5	6.8	42.3	15.9				
						26	8.36	46.2	19.7				
						26.5	8.49	46.6	20.1				
						27	8.61	46.9	20.4				
						27.5	8.74	47.3	20.7				
						28	8.86	47.6	21				
						28.5	8.99	47.9	21.3				

LB型防爆电动单梁起重机

LB Type Explosion Proof Electric Single Girder Crane

起重量 Lifting capacity	跨度 Span	起重机总重 Crane total weight	最大轮压 Max.wheel load	最小轮压 Min.wheel load	基本尺寸 (mm) Basic dimensions									
					踏面至主梁顶 H1(mm) Wheel tread approach to top	踏面至吊钩中 心 H2(mm) Wheel tread approach to center of hook	端梁轮距 W(mm) End carriage wheelbase	端梁总长 B(mm) Total length of end carriage	吊钩左极限 C1(mm) Hook approach to limit position on the left	吊钩右极限 C2(mm) Hook approach to limit position on the right				
t	7.5	3.06	50.8	5.9	735	1815	1500	2000	1293	1893				
	8	3.13	51.6	6										
	8.5	3.21	52.3	6.1										
	9	3.28	53	6.3										
	9.5	3.36	53.6	6.4										
	10	3.43	54.2	6.5										
	10.5	3.51	54.7	6.7										
	11	3.58	55.2	6.9										
	11.5	3.95	56.4	7.8	835	1815	2000	2500	1293	1893				
	12	4.03	56.9	7.9										
	12.5	4.12	57.3	8.1										
	13	4.21	57.8	8.3										
	13.5	4.3	58.2	8.5										
	14	4.38	58.6	8.7										
	14.5	4.64	59.4	9.4										
	15	4.72	59.8	9.5										
	15.5	4.82	60.2	9.8	890	1840	2000	2500	1293	1893				
	16	4.91	60.5	10			2500				3000			
	16.5	5	60.9	10.2			880	1950			2500	3000	1293	1893
	17	5.09	61.2	10.4										
	17.5	5.59	62.5	11.8										
	18	5.69	62.9	12										
	18.5	5.8	63.3	12.3										
	19	5.89	63.6	12.5										
	19.5	6.01	64	12.8										
	20	6.83	66.1	14.8										
	20.5	6.94	66.5	15.1	920	1970	3000	3500	1293	1893				
	21	7.05	66.9	15.3										
	21.5	7.18	67.3	15.7										
	22	7.29	67.6	15.9										
	22.5	7.42	68	16.2										
	23	8.55	71.9	20.1										
23.5	8.67	72.4	20.5											
24	8.8	72.8	20.8											
24.5	8.97	73.3	21.2	1065	1865	3500	4000	1293	1893					
25	9.09	73.6	21.5											
25.5	9.22	74.1	21.9											
26	13.03	82.5	30.2											
26.5	13.23	83	30.7											
27	13.4	83.5	31.2											
27.5	13.6	84.1	31.7											
28	13.8	84.6	32.1											
28.5	14	85.1	32.6	1160	1890	4000	4700	1293	1893					

LB型防爆电动单梁起重机

LB Type Explosion Proof Electric Single Girder Crane

起重量 Lifting capacity	跨度 Span	起重机总重 Crane total weight	最大轮压 Max.wheel load	最小轮压 Min.wheel load	基本尺寸 (mm) Basic dimensions									
					踏面至主梁顶 H1(mm) Wheel tread approach to top	踏面至吊钩中 心 H2(mm) Wheel tread approach to center of hook	端梁轮距 W(mm) End carriage wheelbase	端梁总长 B(mm) Total length of end carriage	吊钩左极限 C1(mm) Hook approach to limit position on the left	吊钩右极限 C2(mm) Hook approach to limit position on the right				
t	7.5	3.39	76.5	6.6	835	2445	1500	2000	1293	1893				
	8	3.47	77.7	6.8										
	8.5	3.57	78.7	7										
	9	3.66	79.7	7.1										
	9.5	3.75	80.6	7.3										
	10	3.84	81.4	7.5										
	10.5	3.94	82.1	7.7										
	11	4.03	82.8	7.9										
	11.5	4.42	84.3	8.9	890	2470	2000	2500	1293	1893				
	12	4.52	84.9	9.1										
	12.5	4.63	85.6	9.4										
	13	4.73	86.1	9.6										
	13.5	4.84	86.7	9.8										
	14	4.94	87.3	10.1										
	14.5	5.76	89.6	12.1										
	15	5.88	90.2	12.4										
	15.5	6.01	90.7	12.7	980	2520	2000	2500	1293	1893				
	16	6.13	91.2	13			2500				3000			
	16.5	6.26	91.8	13.3			1065	2495			2500	3000	1293	1893
	17	6.37	92.3	13.5										
	17.5	7.35	94.9	16										
	18	7.48	95.4	16.3										
	18.5	7.64	96	16.7										
	19	7.77	96.4	17										
	19.5	7.94	97	17.4										
	20	8.43	98.4	18.6										
	20.5	8.59	98.9	19	1135	2545	3000	3500	1293	1893				
	21	8.74	99.4	19.4										
	21.5	8.9	99.9	19.8										
	22	9.04	100.4	20.1										
	22.5	9.21	100.9	20.5										
	23	12.17	108.4	27.9										
23.5	12.38	109.1	28.5											
24	12.56	109.6	28.9											
24.5	12.77	110.3	29.4	1200	2590	3500	4200	1293	1893					
25	12.96	110.8	29.9											
25.5	13.17	111.4	30.4											
26	14.26	114.2	33.1											
26.5	14.48	114.9	33.7											
27	14.67	115.4	34.1											
27.5	14.9	116.1	34.7											
28	15.1	116.6	35.2											
28.5	15.3	117.2	35.7	1300	2600	4000	4700	1293	1893					

LB型防爆电动单梁起重机

LB Type Explosion Proof Electric Single Girder Crane

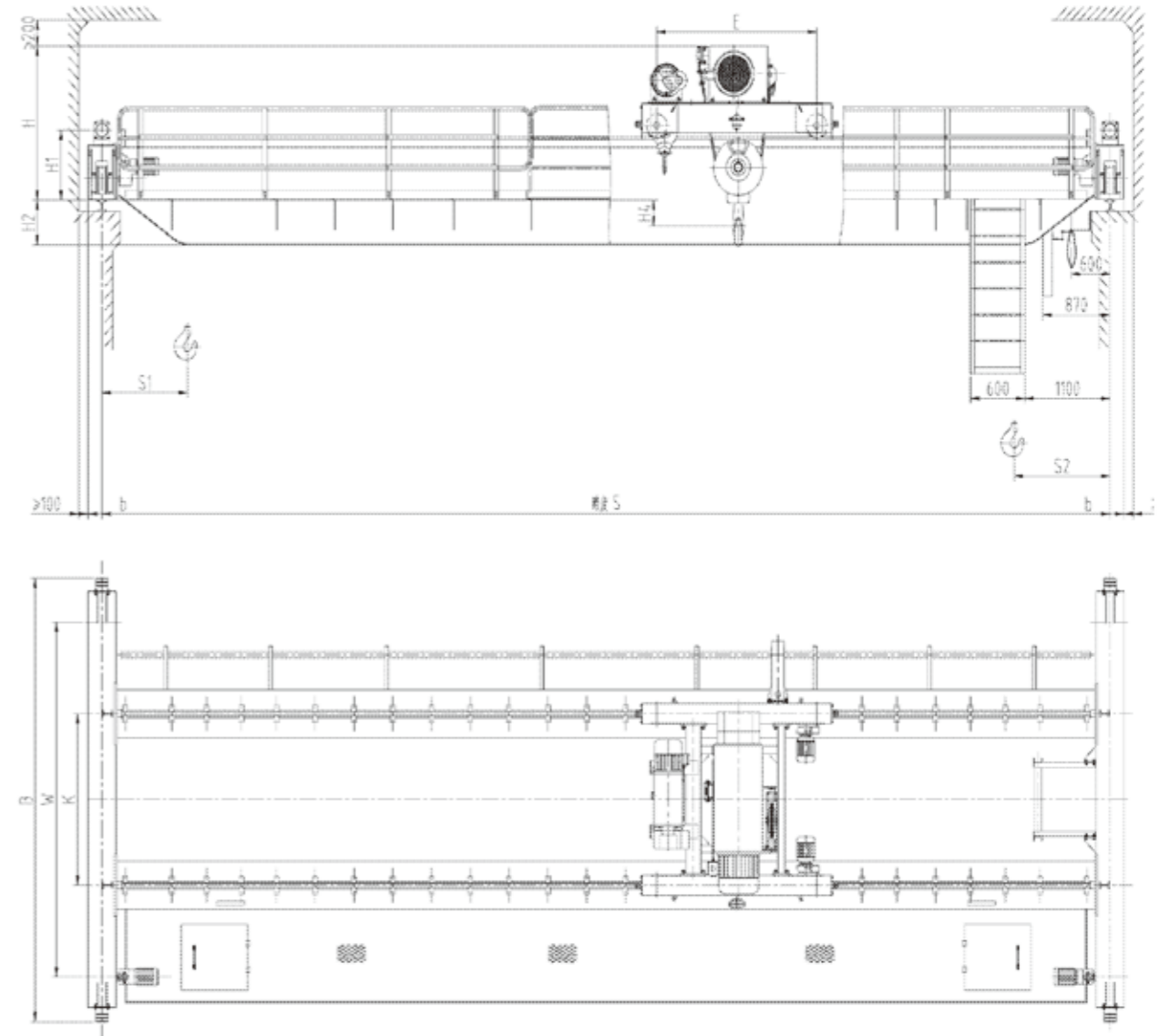
起重量 Lifting capacity	跨度 Span	起重机总重 Crane total weight	最大轮压 Max.wheel load	最小轮压 Min.wheel load	基本尺寸 (mm) Basic dimensions									
					踏面至主梁顶 H1(mm) Wheel tread approach to top	踏面至吊钩中 心 H2(mm) Wheel tread approach to center of hook	端梁轮距 W(mm) End carriage wheelbase	端梁总长 B(mm) Total length of end carriage	吊钩左极限 C1(mm) Hook approach to limit position on the left	吊钩右极限 C2(mm) Hook approach to limit position on the right				
20	7.5	5.27	99	10.2	900	2400	2000	2700	1394	1933				
	8	5.38	100.4	10.4										
	8.5	5.52	101.8	10.6										
	9	5.64	103	10.8										
	9.5	5.77	104.2	11.1										
	10	5.89	105.2	11.3										
	10.5	6.02	106.2	11.6										
	11	6.14	107.1	11.8	970	2430	2000	2700	1394	1933				
	11.5	6.71	109.1	13.2										
	12	6.84	109.9	13.5										
	12.5	6.99	110.8	13.8										
	13	7.12	111.5	14.1										
	13.5	7.27	112.3	14.5										
	14	7.4	113	14.8										
	14.5	8.55	116.3	17.6	1050	2490	2000	2700	1394	1933				
	15	8.71	117	18										
	15.5	8.9	117.7	18.4			2500	3200						
	16	9.05	118.4	18.8										
	16.5	9.24	119.2	19.2			1130	2550			2500	3200	1394	1933
	17	9.4	119.8	19.6										
	17.5	10.11	121.8	21.4										
	18	10.28	122.5	21.8										
	18.5	10.48	123.2	22.3										
	19	10.66	123.8	22.7										
	19.5	10.85	124.5	23.2										
20	11.02	126.6	25.1	1200	2590	3000	3700	1394	1933					
20.5	11.84	127.3	25.6											
21	12	127.9	26											
21.5	12.2	128.6	26.5											
22	12.4	129.2	27											
22.5	12.6	129.9	27.5											
23	13.6	132.5	30											
23.5	13.8	133.2	30.6	1300	2600	3500	4200	1394	1933					
24	140.5	133.8	31											
24.5	142.8	134.5	31.6											
25	144.7	135.1	32.1											
25.5	146.9	135.8	32.6											

- 注: 1.司机室操作时起重机总重增加0.5t, 最大、最小轮压均增加2kN。
 2.如有其他要求, 请在订货时特别提出。
 3.我公司保留在无需任何通知的情况下对以上信息进行变更的权力。

- Note: 1.Total weight should increase 0.5t, the minimum and maximum wheel pressure each increase 2KN if cab operation.
 2.Other requirements please put forward when you place an order.
 3.We reserve the right to change above information without any notice.

LHB型防爆电动葫芦桥式起重机

LHB Type Explosion Proof Electric Hoist Double Girder Crane



LHB型防爆电动葫芦桥式起重机

LHB Type Explosion Proof Electric Hoist Double Girder Crane

起重量 Lifting capacity	t	5									
工作级别 Working system		A3									
防爆标志 Explosion proof grade		Exd II BT4; Exd II CT4									
操作方式 Operational method		地面操作 Ground controlling									
主钩起升速度 Main hook lifting speed	m/min	8(0.8/8)									
副钩起升速度/ Aux. hook lifting speed	m/min										
小车运行速度 Crab travelling speed	m/min	20									
大车运行速度 Crane travelling speed	m/min	20									
电动葫芦 Electric hoist		HB									
起升高度 Lifting height	m	6、9、12									
电源 Power source		三相交流 Three phase.AC 380V 50HZ									
荐用大车轨道 Steel track		P30									
跨度 Span	m	7.5	10.5	13.5	16.5	19.5	22.5	25.5	28.5	31.5	
最大轮压 Max. wheel pressure	kN	34	38	42	43	49	53	61	65	70	
自重 Crane weight	kg	4456	5181	6358	7466	9094	10613	13825	15615	17547	
整机总功率 Total power	kW	10.7				12.1					
基本尺寸 Basic dimensions	B	mm	3870						4870		
	W	mm	3200						4000		
	K	mm	1400								
	E	mm	1220								
	H	mm	1238						1358		
	H1	mm	565						685		
	H2	mm	80	80	180	280	380	384	364	464	564
	H3	mm	2605	2605	2705	2805	2905	2909	2889	2989	3089
	H4	mm	-22						-142		
	b	mm	120						135		
	S1	mm	974								
	S2	mm	1100			1550	1680	1940	2070	2330	

LHB型防爆电动葫芦桥式起重机

LHB Type Explosion Proof Electric Hoist Double Girder Crane

起重量 Lifting capacity	t	10/3									
工作级别 Working system		A3									
防爆标志 Explosion proof grade		Exd II BT4; Exd II CT4									
操作方式 Operational method		地面操作 Ground controlling									
主钩起升速度 Main hook lifting speed	m/min	7(0.7/7)									
副钩起升速度 Aux. hook lifting speed	m/min	8(0.8/8)									
小车运行速度 Crab travelling speed	m/min	20									
大车运行速度 Crane travelling speed	m/min	20									
电动葫芦 Electric hoist		HB									
起升高度 Lifting height	m	9、12									
电源 Power source		三相交流 Three phase.AC 380V 50HZ									
荐用大车轨道 Steel track		P30									
跨度 Span	m	7.5	10.5	13.5	16.5	19.5	22.5	25.5	28.5	31.5	
最大轮压 Max. wheel pressure	kN	60.5	62.9	70.2	73.8	81.1	86.4	94.6	100.9	108.1	
自重 Crane weight	kg	5775	6737	8015	9467	12076	13963	17036	19426	22181	
整机总功率 Total power	kW	17.6									
基本尺寸 Basic dimensions	B	mm	4270			4470			4870		
	W	mm	3600						4000		
	K	mm	1800								
	E	mm	1800								
	H	mm	1440			1560			1625		
	H1	mm	565			685			750		
	H2	mm	180	180	280	430	314	464	499	599	699
	H3	mm	2705	2705	2805	2955	2839	2989	3024	3124	3224
	H4	mm	-26			-146			-211		
	b	mm	120			150			230		
	S1	mm	1413								
	S2	mm	1147		1347	1550	1680	1940	2070	2330	

LHB型防爆电动葫芦桥式起重机

LHB Type Explosion Proof Electric Hoist Double Girder Crane

起重量 Lifting capacity	t	16/3										
工作级别 Working system		A3										
防爆标志 Explosion proof grade		Exd II BT4; Exd II CT4										
操作方式 Operational method		地面操作 Ground controlling										
主钩起升速度 Main hook lifting speed	m/min	3.5(0.35/3.5)										
副钩起升速度 Aux. hook lifting speed	m/min	8(0.8/8)										
小车运行速度 Crab travelling speed	m/min	20										
大车运行速度 Crane travelling speed	m/min	20										
电动葫芦 Electric hoist		HB										
起升高度 Lifting height	m	9、12										
电源 Power source		三相交流 Three phase.AC 380V 50HZ										
荐用大车轨道 Steel track		P30										
跨度 Span	m	7.5	10.5	13.5	16.5	19.5	22.5	25.5	28.5	31.5		
最大轮压 Max. wheel pressure	kN	87.5	95	101.1	107.5	115.9	121.9	131.2	138.8	146.7		
自重 Crane weight	kg	6738	8025	9498	11428	14816	16866	20258	23069	26055		
整机总功率 Total power	kW											
基本尺寸 Basic dimensions	B	mm	4620				4820		5020			
	W	mm	3600				3800		4000			
	K	mm	2000									
	E	mm	2000									
	H	mm	1564				1629					
	H1	mm	685				750					
	H2	mm	110	162	264	364	399	549	651	751	901	
	H3	mm	2635	2687	2789	2889	2924	3074	3176	3276	3426	
	H4	mm	403				338					
	b	mm	150				230					
	S1	mm	1505									
S2	mm	1255				1550	1680	1940	2070	2330		

LHB型防爆电动葫芦桥式起重机

LHB Type Explosion Proof Electric Hoist Double Girder Crane

起重量 Lifting capacity	t	20/5										
工作级别 Working system		A3										
防爆标志 Explosion proof grade		Exd II BT4; Exd II CT4										
操作方式 Operational method		地面操作 Ground controlling										
主钩起升速度 Main hook lifting speed	m/min	3.5(0.35/3.5)										
副钩起升速度 Aux. hook lifting speed	m/min	8(0.8/8)										
小车运行速度 Crab travelling speed	m/min	10										
大车运行速度 Crane travelling speed	m/min	10										
电动葫芦 Electric hoist		HB										
起升高度 Lifting height	m	9、12、15										
电源 Power source		三相交流 Three phase.AC 380V 50HZ										
荐用大车轨道 Steel track		P38										
跨度 Span	m	7.5	10.5	13.5	16.5	19.5	22.5	25.5	28.5	31.5		
最大轮压 Max. wheel pressure	kN	110.5	119.5	127.4	134.6	141.5	148.8	153.8	165.2	172.8		
自重 Crane weight	kg	9374	10535	12346	14350	16819	19259	20906	25115	27986		
整机总功率 Total power	kW	26.5					27.9					
基本尺寸 Basic dimensions	B	mm	4620				4820		5020			
	W	mm	3600				3800		4000			
	K	mm	2000									
	E	mm	2100									
	H	mm	1722									
	H1	mm	750									
	H2	mm	49	149	249	353	453	553	703	803	953	
	H3	mm	2574	2674	2774	2878	2978	3078	3228	3328	3478	
	H4	mm	394									
	b	mm	230									
	S1	mm	1490									
S2	mm	1370				1570	1680	1940	2070	2330		

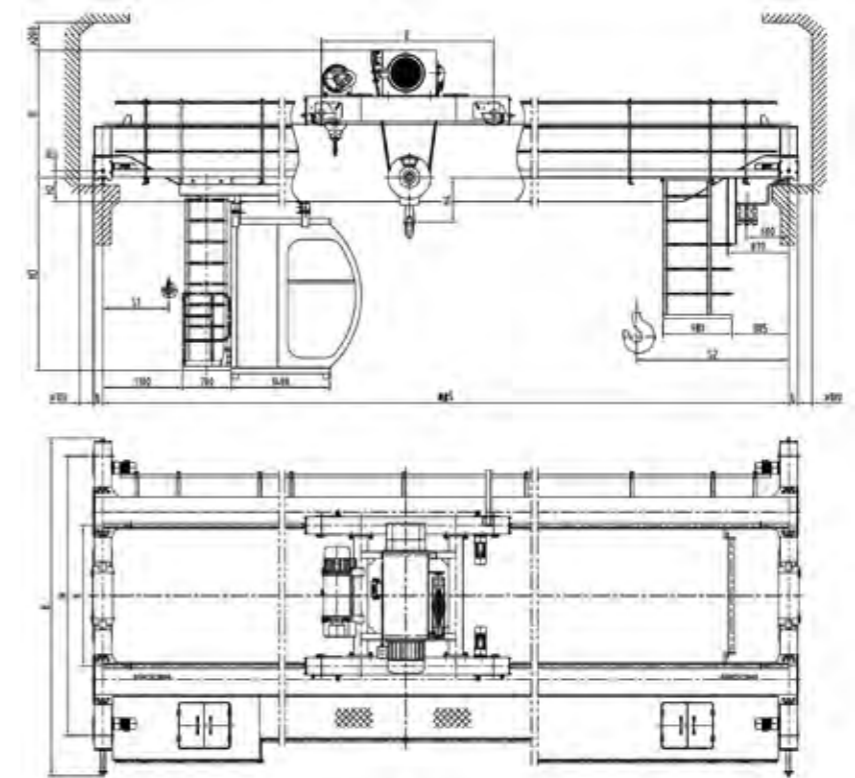
LHB型防爆电动葫芦桥式起重机

LHB Type Explosion Proof Electric Hoist Double Girder Crane

起重量 Lifting capacity	t	32/5							
工作级别 Working system		A3							
防爆标志 Explosion proof grade		Exd II BT4; Exd II CT4							
操作方式 Operational method		地面操作 Ground controlling							
主钩起升速度 Main hook lifting speed	m/min	3(0.3/3)							
副钩起升速度 Aux. hook lifting speed	m/min	8(0.8/8)							
小车运行速度 Crab travelling speed	m/min	20							
大车运行速度 Crane travelling speed	m/min	20							
电动葫芦 Electric hoist		HB							
起升高度 Lifting height	m	9、12							
电源 Power source		三相交流 Three phase.AC 380V 50HZ							
荐用大车轨道 Steel track		P43							
跨度 Span	m	7.5	10.5	13.5	16.5	19.5	22.5	25.5	
最大轮压 Max. wheel pressure	kN	158.7	175.2	186.6	196.4	207.4	217.7	222.4	
自重 Crane weight	kg	11575	13394	15372	17560	20790	24107	25316	
整机总功率 Total power	kW	36.4							
基本参数 Basic dimensions	B	mm	4820				5020		
	W	mm	3800				4000		
	K	mm	2000						
	E	mm	2700						
	H	mm	1863				1963		
	H1	mm	750				850		
	H2	mm	151	251	355	457	457	609	709
	H3	mm	2676	2776	2880	2982	2982	3134	3234
	H4	mm	542				442		
	b	mm	230						
	S1	mm	1705						
S2	mm	1865							

LH型电动葫芦桥式起重机

LH Model Electric Hoist Bridge Crane



产品概述:

LH型电动葫芦桥式起重机具有外型尺寸紧凑、建筑净空高度低、自重轻、轮压小等优点。适用于机械加工车间、冶金厂辅助车间、仓库、料场、电站等的转运、装配、检修和装卸作业；它也可以代替普通双梁桥式起重机，用于轻纺工业和食品工业的生产车间。其工作类型为轻级和中级，工作环境温度为-25℃~40℃，禁止在易燃、易爆、腐蚀性介质环境中使用。

本产品设有地面和操作室操作两种形式。操作室有开式、闭式两种。可根据实际情况分为左或右面安装两种形式。入门方向有侧面、端面、顶部三种，以满足用户在各种不同需要的情况下进行选择。

Product Introduction:

LH model electric Hoist Overhead Crane has such features as tight dimensions, low building headroom, light dead weight and light wheel load. They are applicable to the transfer, assembly, check and repair as well as load and unload at mechanic processing workshop, subsidiary workshop of metallurgical mills, warehouse, goods yard and power station. They can also be used instead of common double-girder overhead crane at production workshop in light textiles or food industry. It has two kinds of classification, that is, light and medium. The working ambient temperature is generally -25°C ~ 40°C. It is forbidden to work in environment with combustible, explosive or corrosive media.

Two operating methods, namely, on floor and in the driver's cabin, have been designed for such kind of crane. The cabin is divided into open-style and closed style. The cabin can be installed on the left or right according to actual conditions. The operator can enter the cabin from one side, rear or top, which depends on the different user's requirements.

LH型电动葫芦桥式起重机

LH Model Electric Hoist Bridge Crane

技术参数 Technical Data											
起重量 Lifting capacity	t	5									
操作方式 Operational method		地面操作 Ground controlling; 司机室操作 Room controlling									
主钩起升速度 Main hook lifting speed	m/min	8 (0.8/8)									
副钩起升速度 Aux. hook lifting speed	m/min										
小车运行速度 Crab travelling speed	m/min	20									
大车运行速度 Crane travelling speed	地操 Ground	m/min	20								
	司机室 Room	m/min	30								
电动葫芦 Electric hoist		CD1 (MD1)									
起升高度 Lifting height	m	6、9、12、18									
工作制度 Working system		A3~A4									
电源 Power source		3-phase A.C.三相交流; 50Hz; 380V									
荐用大车轨道 Steel track		P30									
跨度 Span	m	10.5	13.5	16.5	19.5	22.5	25.5	28.5	31.5		
最大轮压 Max. wheel pressure	地操 Ground	kN	41	44	47	52	56	60	65	71	
	司机室 Room	kN	43	46	49	54	58	62	67	73	
自重 Crane weight	地操 Ground	kg	4886	5601	6701	8199	9603	11196	13216	14984	
	司机室 Room	kg	5686	6401	7501	8999	10403	11996	14016	15784	
整机总功率 Total power	地操 Ground	kW	9.1	9.3	9.9				10.5		
	司机室 Room	kW	9.9			10.5			11.3		
基本尺寸 Basic dimensions	B	mm	4140						4840		
	W	mm	3300						4000		
	K	mm	1400								
	E	mm	1200								
	H	mm	1308			1508					
	H1	mm	100								
	H2	mm	50	100	150	50	100	100	150	250	
	H3	mm	2475	2525	2575	2475	2525	2625	2675	2775	
	H4	mm	-104			-304					
	b	mm	135								
	S1	mm	1221								
	S2	mm	1175								

LH型电动葫芦桥式起重机

LH Model Electric Hoist Bridge Crane

技术参数 Technical Data											
起重量 Lifting capacity	t	10									
操作方式 Operational method		地面操作 Ground controlling; 司机室操作 Room controlling									
主钩起升速度 Main hook lifting speed	m/min	7 (0.7/7)									
副钩起升速度 Aux. hook lifting speed	m/min										
小车运行速度 Crab travelling speed	m/min	20									
大车运行速度 Crane travelling speed	地操 Ground	m/min	20								
	司机室 Room	m/min	30								
电动葫芦 Electric hoist		CD1 (MD1)									
起升高度 Lifting height	m	9、12、18									
工作制度 Working system		A3~A4									
电源 Power source		3-phase A.C.三相交流; 50Hz; 380V									
荐用大车轨道 Steel track		P30									
跨度 Span	m	10.5	13.5	16.5	19.5	22.5	25.5	28.5	31.5		
最大轮压 Max. wheel pressure	地操 Ground	kN	72	78	82	44	47	50	54	56	
	司机室 Room	kN	74	80	84	46	49	52	56	58	
自重 Crane weight	地操 Ground	kg	6394	7678	8804	11016	12559	14747	17274	19321	
	司机室 Room	kg	7194	8478	9604	11816	13359	15547	18074	20121	
整机总功率 Total power	地操 Ground	kW	15.6			16.2			17		
	司机室 Room	kW	16.2			17			18.4		
基本尺寸 Basic dimensions	B	mm	4840			4818			4868		
	W	mm	4000			3978			4028		
	K	mm	2000								
	E	mm	1450								
	H	mm	1593					1595			
	H1	mm	100								
	H2	mm	50	150	150	200	350	400	450	502	
	H3	mm	2425	2525	2675	2725	2875	2925	2975	3025	
	H4	mm	250						252		
	b	mm	135			185					
	S1	mm	1375								
	S2	mm	1365								

LH型电动葫芦桥式起重机

LH Model Electric Hoist Bridge Crane

技术参数 Technical Data											
起重量 Lifting capacity	t	16/3									
操作方式 Operational method		地面操作 Ground controlling; 司机室操作 Room controlling									
主钩起升速度 Main hook lifting speed	m/min	3.5(0.35/3.5)									
副钩起升速度 Aux. hook lifting speed	m/min	8(0.8/8)									
小车运行速度 Crab travelling speed	m/min	20									
大车运行速度 Crane travelling speed	地操 Ground	m/min	20								
	司机室 Room	m/min	30								
电动葫芦 Electric hoist		CD1(MD1)									
起升高度 Lifting height	m	9、12									
工作制度 Working system		A3~A4									
电源 Power source		3-phase A.C.三相交流; 50Hz; 380V									
荐用大车轨道 Steel track		P30									
跨度 Span	m	10.5	13.5	16.5	19.5	22.5	25.5	28.5	31.5		
最大轮压 Max. wheel pressure	地操 Ground	kN	53	57	61	64	67	72	76	79	
	司机室 Room	kN	55	59	63	66	69	74	78	81	
自重 Crane weight	地操 Ground	kg	8000	9440	11360	13350	15210	18110	20880	23420	
	司机室 Room	kg	8850	10290	12210	14200	16060	18960	21730	24270	
整机总功率 Total power	地操 Ground	kW	21.3		22.1			22.3			
	司机室 Room	kW	22.1		23.5						
基本尺寸 Basic dimensions	B	mm	4328		4378		4428		4478		
	W	mm	3928		3978		4028		4078		
	K	mm	2000								
	E	mm	1700								
	H	mm	1499			1699					
	H1	mm	100								
	H2	mm	100	200	300	202	302	402	502	602	
	H3	mm	2625	2725	2825	2727	2827	2927	3027	3127	
	H4	mm	539			339					
	b	mm	185								
	S1	mm	742								
	S2	mm	1518								

LH型电动葫芦桥式起重机

LH Model Electric Hoist Bridge Crane

技术参数 Technical Data											
起重量 Lifting capacity	t	20/5									
操作方式 Operational method		地面操作 Ground controlling; 司机室操作 Room controlling									
主钩起升速度 Main hook lifting speed	m/min	4.2(0.42/4.2)									
副钩起升速度 Aux. hook lifting speed	m/min	8(0.8/8)									
小车运行速度 Crab travelling speed	m/min	20									
大车运行速度 Crane travelling speed	地操 Ground	m/min	20								
	司机室 Room	m/min	30								
电动葫芦 Electric hoist		WH164; CD1(MD1)									
起升高度 Lifting height	m	9、12、15									
工作制度 Working system		A3~A4									
电源 Power source		3-phase A.C.三相交流; 50Hz; 380V									
荐用大车轨道 Steel track		P38									
跨度 Span	m	10.5	13.5	16.5	19.5	22.5	25.5	28.5	31.5		
最大轮压 Max. wheel pressure	地操 Ground	kN	65	69	74	78	83	87	91	96	
	司机室 Room	kN	67	71	76	80	85	89	93	98	
自重 Crane weight	地操 Ground	kg	9130	10889	12751	15239	18025	20963	23682	27025	
	司机室 Room	kg	9980	11739	13601	16089	18875	21813	24532	27875	
整机总功率 Total power	地操 Ground	kW	31.2		32.6						
	司机室 Room	kW	32.6		34.2						
基本尺寸 Basic dimensions	B	mm	4768		4818		4868		4918		
	W	mm	3928		3978		4028		3978		
	K	mm	2000								
	E	mm	2140								
	H	mm	1678			1780		1880			
	H1	mm	100								
	H2	mm	100	150	252	252	352	352	452	552	
	H3	mm	2525	2675	2777	2777	2877	2877	2977	3077	
	H4	mm	330			228		128			
	b	mm	185								
	S1	mm	822								
	S2	mm	1695								

技术参数 Technical Data											
起重量 Lifting capacity	t	32/5									
操作方式 Operational method	地面操作 Ground controlling; 司机室操作 Room controlling										
主钩起升速度 Main hook lifting speed	m/min	3 (0.3/3)									
副钩起升速度 Aux. hook lifting speed	m/min	8 (0.8/8)									
小车运行速度 Crab travelling speed	m/min	20									
大车运行速度 Crane travelling speed	地操 Ground	m/min	20								
	司机室 Room	m/min	30								
电动葫芦 Electric hoist	WH164; CD1 (MD1)										
起升高度 Lifting height	m	9、12									
工作制度 Working system	A3~A4										
电源 Power source	3-phase A.C.三相交流; 50Hz; 380V										
荐用大车轨道 Steel track	P43										
跨度 Span	m	10.5	13.5	16.5	19.5	22.5	25.5	28.5	31.5		
最大轮压 Max. wheel pressure	地操 Ground	kN	96	103	109	115	120	125	131	135	
	司机室 Room	kN	98	105	111	117	122	127	133	137	
自重 Crane weight	地操 Ground	kg	11101	13050	15370	18120	20732	24236	27482	30401	
	司机室 Room	kg	11901	13850	16170	18920	21532	25036	28282	31201	
整机总功率 Total power	地操 Ground	kW	33.4						35		
	司机室 Room	kW	35						37.8		
基本尺寸 Basic dimensions	B	mm	4768	4818	4868	4918			4968		
	W	mm	3828	3878	3928	3978			4028		
	K	mm	2000								
	E	mm	2450								
	H	mm	1904			2006					
	H1	mm	100								
	H2	mm	52	152	254	254	404	504	606	706	
	H3	mm	2577	2677	2779	2779	2929	3029	3131	3231	
	H4	mm	542			440					
	b	mm	185								
	S1	mm	871								
S2	mm	1875									

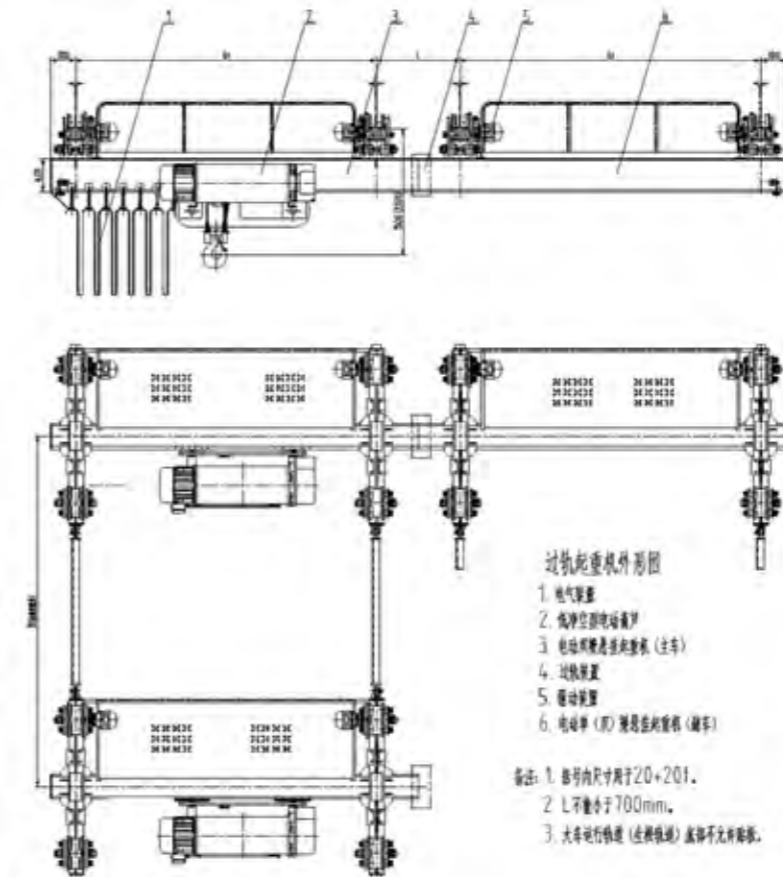
产品概述:

XG型电动悬挂过轨起重机是电厂磨煤系统为发电机组配套的专用起重设备,其主要用途是检修磨煤机,工作级别为A1-A3级,工作环境温度-25~+40°C。不宜吊运熔化金属或有毒,易燃易爆物品。

本产品属组合设备,它是由电动葫芦小车,电动双梁悬挂起重机(主车), (手) 电动单(双)梁悬挂起重机(副车)和过轨装置组成。电气系统是通过按钮开关操纵和控制。

Product Introduction:

XG type electric hanging Cross Track Crane is the special hoist equipment for generating sets of coal grinding system provided by power plant. It is mainly used for overhauling the coal grinding mill. The operation level is level A1-A3 and the operation temperature is -25 ~ +40°C. It is not suitable to hoist the melting metal or toxic, flammable and explosive articles. This product is the combined equipment. It is made of electric hoist trolley, electric double girder suspension crane (main hoist), (manual) electric single (double) girder suspension crane (auxiliary hoist) and cross track equipment. The electric system is operated and controlled by button switch.



XG型电动悬挂过轨起重机

XG Electric Hanging Cross Track Crane

项目 Project	单位 Unit	电动双梁悬挂起重机 (主车) Electric two beam hanging crane (main hoist)	电动单梁悬挂起重机 (副车) Electric two beam hanging crane (main hoist)	电动葫芦小车 Dolly of electric hoist
起重量 Hoisting capacity	t	12.5+12.5	12.5	12.5+12.5
跨度 span	mm	3000	5000	
起升高度 Hoisting height	m	10	10	10
起升速度 Hoisting speed	m/min	3.5	3.5	3.5
运行速度 Running speed	m/min	20	20	20
工作级别 Work level		A3	A3	M3
运行电机 Running electric machinery	型号 Type	ZDY;21-4	ZDY;21-4	ZDY;21-4
	功率 Power	0.8×4	0.8×2n	0.8×4
起升电机 Hoisting electric machinery	型号 Type			ZD;51-4
	功率 Power			13×2
一组车轮最大轮压 Maximum wheel pressure of wheel in the first group	kN	71.6	71.8	34
质量 Quality	Kg	2750	1450×n	1130×2
车轮直径 Wheel diameter		Φ154		
电源 Power supply		三相 50Hz 380V Three phase 50Hz 380 V		

项目 Project	单位 Unit	电动双梁悬挂起重机 (主车) Electric two beam hanging crane (main hoist)	电动单梁悬挂起重机 (副车) Electric two beam hanging crane (main hoist)	电动葫芦小车 Dolly of electric hoist
起重量 Hoisting capacity	t	16+16	16	16+16
跨度 span	mm	3650	4000	
起升高度 Hoisting height	m	11	11	11
起升速度 Hoisting speed	m/min	3.5	3.5	3.5
运行速度 Running speed	m/min	20	20	20
工作级别 Work level		A3	A3	M3
运行电机 Running electric machinery	型号 Type	ZDY;21-4	ZDY;21-4	ZDY;21-4
	功率 Power	0.8×4	0.8×2n	0.8×4
起升电机 Hoisting electric machinery	型号 Type			ZD;51-4
	功率 Power			13×2
一组车轮最大轮压 Maximum wheel pressure of wheel in the first group	kN	90	90.1	43.1
质量 Quality	Kg	3050	1560×n	1240×2
车轮直径 Wheel diameter		Φ154		
电源 Power supply		三相 50Hz 380V Three phase 50Hz 380V		

项目 Project	单位 Unit	电动双梁悬挂起重机 (主车) Electric two beam hanging crane (main hoist)	电动单梁悬挂起重机 (副车) Electric two beam hanging crane (main hoist)	电动葫芦小车 Dolly of electric hoist
起重量 Hoisting capacity	t	20+20	20	20+20
跨度 span	mm	3500	3650	1500
起升高度 Hoisting height	m	10	10	10
起升速度 Hoisting speed	m/min	3.3	3.3	3.3
运行速度 Running speed	m/min	20	20	20
工作级别 Work level		A3	A3	M3
运行电机 Running electric machinery	型号 Type	ZDY;21-4	ZDY;21-4	ZDY;21-4
	功率 Power	0.8×4×8	0.8×2n×4n	0.8×8
起升电机 Hoisting electric machinery	型号 Type			ZD;52-4
	功率 Power			18.5×2
一组车轮最大轮压 Maximum wheel pressure of wheel in the first group	kN	91.8	92.9	59.8
质量 Quality	Kg	3050	1700×n	2400×2
车轮直径 Wheel diameter		Φ154		
电源 Power supply		三相 50Hz 380V Three phase 50Hz 380V		